

# Kitsap Transit Quarterly System Report



**4th Quarter: October - December 2016**

## Total Boardings Systemwide

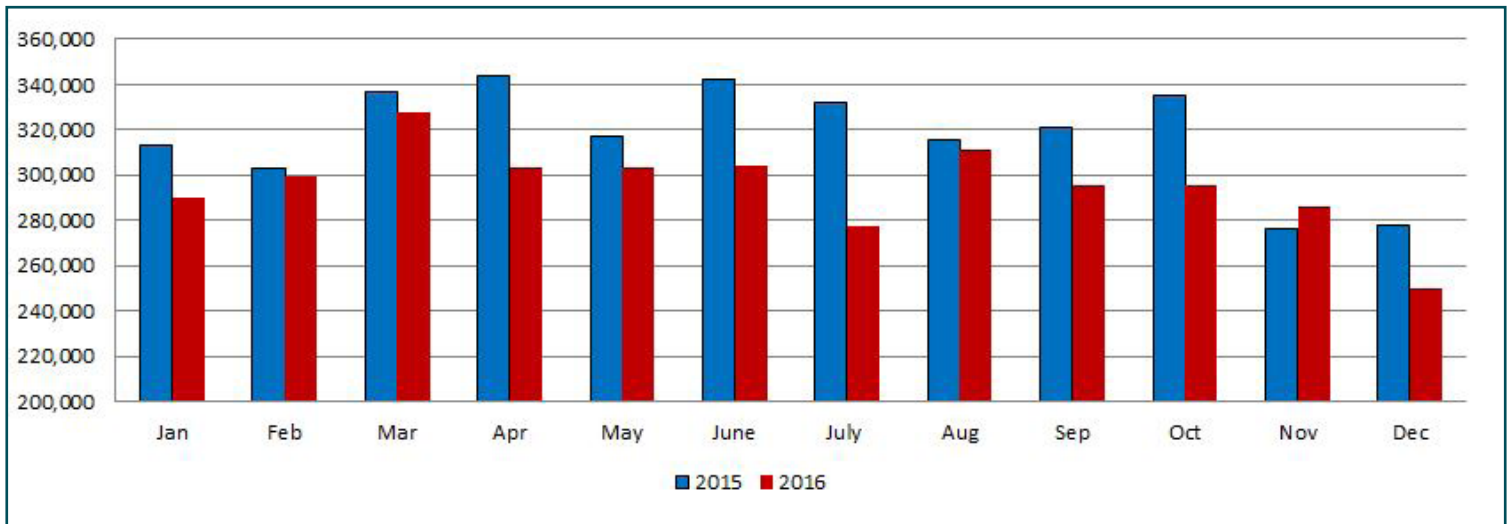
### 4th Quarter

	4th Quarter, 2016			
TOTAL BOARDINGS	October	November	December	Quarter TOTAL
Routed	184,775	179,651	158,002	522,428
ACCESS & VanLink	23,733	21,884	20,359	65,976
Worker/Driver	33,086	31,781	26,041	90,908
Foot Ferry	40,042	39,309	33,429	112,780
Vanpool*	13,908	13,374	12,105	39,387
Guaranteed Ride Home	16	13	14	43
<b>Systemwide TOTAL</b>	<b>295,560</b>	<b>286,012</b>	<b>249,950</b>	<b>831,522</b>

\* Vanpools In Service: October - 69, November - 68, December - 68

## Comparison 2015 vs. 2016

**Systemwide Boardings  
2015 vs. 2016**





# Total Boardings Systemwide

## Comparison 2015 vs. 2016

TOTAL BOARDINGS	Year-to-Year Comparison			
	4Q 2015	4Q 2016	Total Difference	% Difference
Routed	2,312,766	2,189,634	(123,132)	-5.3%
ACCESS & VanLink	305,544	290,394	(15,150)	-5.0%
Worker/Driver	496,769	400,800	(95,969)	-19.3%
Foot Ferry	492,857	487,279	(5,578)	-1.1%
Vanpool	205,418	175,920	(29,498)	-14.4%
Guaranteed Ride Home	155	188	33	21.3%
<b>TOTAL BOARDINGS</b>	<b>3,813,509</b>	<b>3,544,215</b>	<b>(269,294)</b>	<b>-7.1%</b>



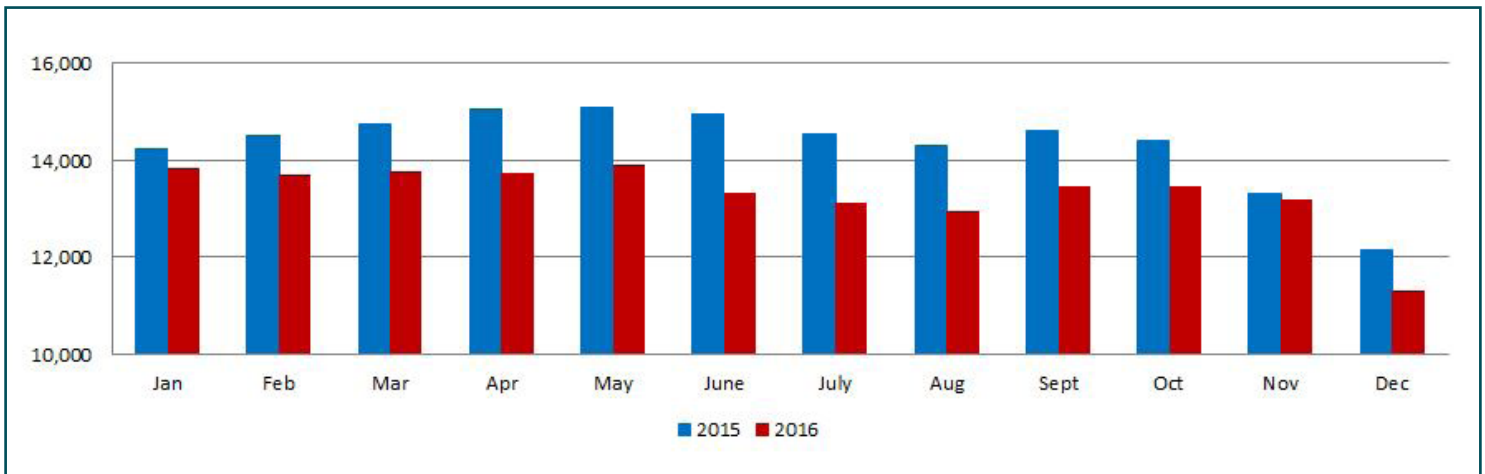
## Average Daily Boardings Systemwide

### Average Daily Boardings by Quarter: Weekdays

AVERAGE DAILY BOARDINGS: WEEKDAYS	Quarter Comparison				
	Q1 2016	Q2 2016	Q3 2016	Q4 2016	2016 Average
Routed	8,503	8,354	8,014	7,909	8,197
ACCESS & VanLink	1,040	1,134	1,069	965	1,052
Worker/Driver	1,751	1,628	1,518	1,595	1,623
Foot Ferry	1,768	1,828	1,921	1,720	1,810
Vanpool	758	710	664	624	690
Guaranteed Ride Home	1	1	1	1	
<b>Systemwide AVERAGE</b>	<b>13,766</b>	<b>13,654</b>	<b>13,188</b>	<b>12,661</b>	<b>13,321</b>

### Comparison 2015 vs. 2016: Weekdays

**Systemwide Weekday  
Average Daily Boardings by Month**



## Average Daily Boardings Systemwide

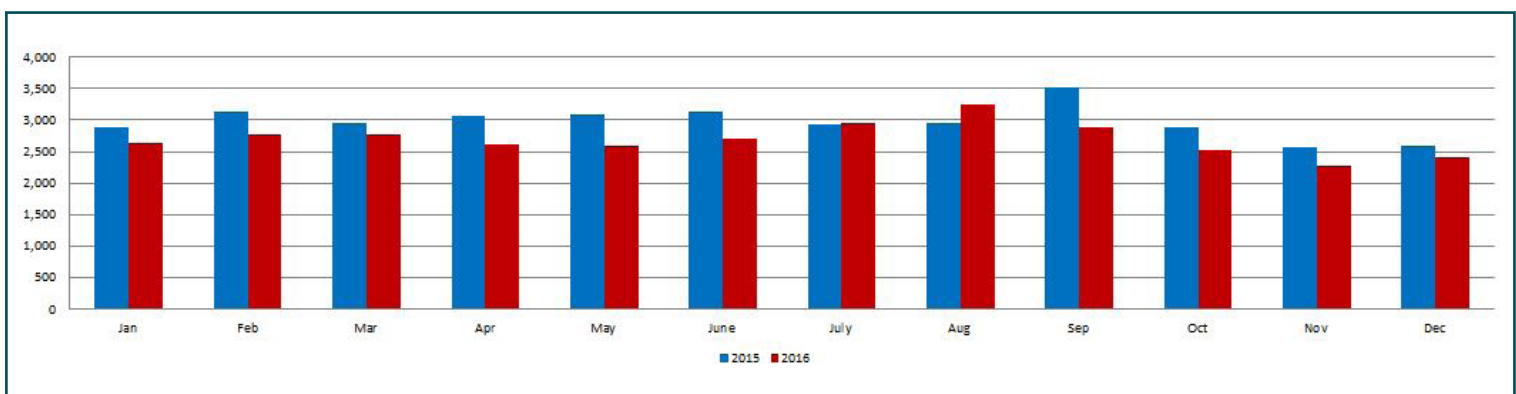
### Average Daily Boardings by Quarter: Saturday

AVERAGE DAILY BOARDINGS: SATURDAY	Quarter Comparison				
	Q1 2016	Q2 2016	Q3 2016	Q4 2016	2016 Average
Routed	1,975	1,938	1,735	1,726	1,839
ACCESS & VanLink*	381	431	454	57	369
Foot Ferry	409	495	688	318	478
<b>Systemwide AVERAGE</b>	<b>2,765</b>	<b>2,864</b>	<b>2,877</b>	<b>2,416</b>	<b>2,727</b>

\*VanLink totals include Saturdays and Sundays

### Comparison 2015 vs. 2016: Saturday

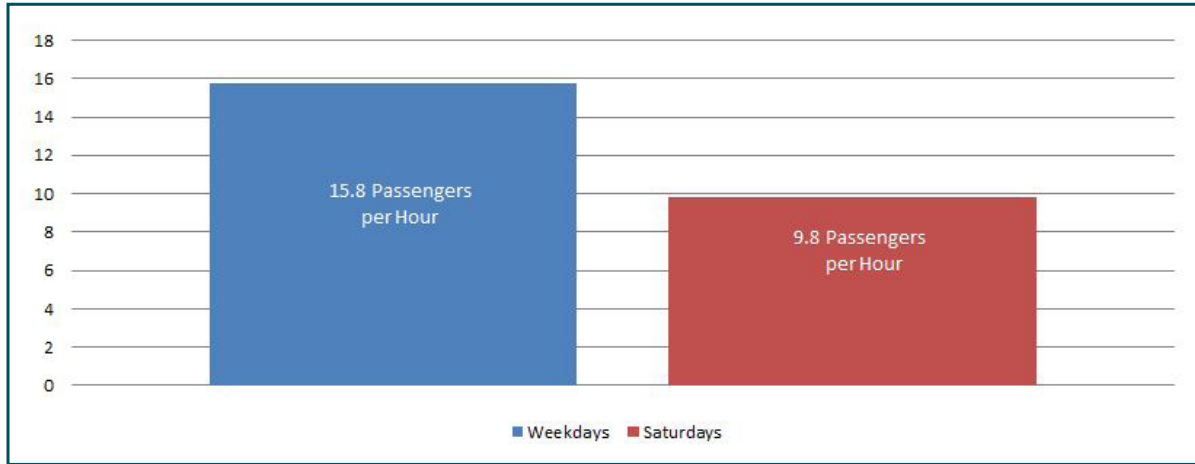
**Systemwide Saturday  
Average Daily Boardings by Month**



## Average Daily Boardings Systemwide

### 4th Quarter

**2016 4th Quarter  
Average PPH Boardings - Weekdays vs. Saturday**



## Average Fare Collected

### 4th Quarter

	4th Quarter, 2016					
AVERAGE FARE COLLECTED*	October	November	December	Quarter TOTAL	2016 AVERAGE	
Routed	\$ 1.21	\$ 1.13	\$ 1.41	\$ 1.24	\$ 1.25	
ACCESS & VanLink	\$ 0.97	\$ 1.06	\$ 1.30	\$ 1.10	\$ 1.11	
Worker/Driver	\$ 4.07	\$ 4.27	\$ 5.15	\$ 4.45	\$ 4.50	
Foot Ferry	\$ 0.94	\$ 1.02	\$ 1.14	\$ 1.03	\$ 1.03	
Vanpool	\$ 2.82	\$ 2.52	\$ 2.79	\$ 2.73	\$ 2.71	
<b>Systemwide AVERAGE</b>	<b>\$ 2.00</b>	<b>\$ 2.00</b>	<b>\$ 2.36</b>	<b>\$ 2.11</b>	<b>\$ 2.12</b>	

\*Fare collected for service divided by total riders for service.

## Average Fare Collected By Quarter

	Quarter Comparison				
AVERAGE FARE COLLECTED*	Q1 2016	Q2 2016	Q3 2016	Q4 2016	2016 AVERAGE
Routed	\$ 1.08	\$ 1.12	\$ 1.18	\$ 1.24	\$ 1.16
ACCESS & VanLink	\$ 1.22	\$ 0.94	\$ 1.02	\$ 1.10	\$ 1.07
Worker/Driver	\$ 3.57	\$ 4.00	\$ 4.19	\$ 4.45	\$ 4.05
Foot Ferry	\$ 0.99	\$ 1.01	\$ 1.04	\$ 1.03	\$ 1.02
Vanpool	\$ 3.05	\$ 2.74	\$ 2.74	\$ 2.73	\$ 2.82

\*Fare collected for service divided by total riders for service.



# Transfers

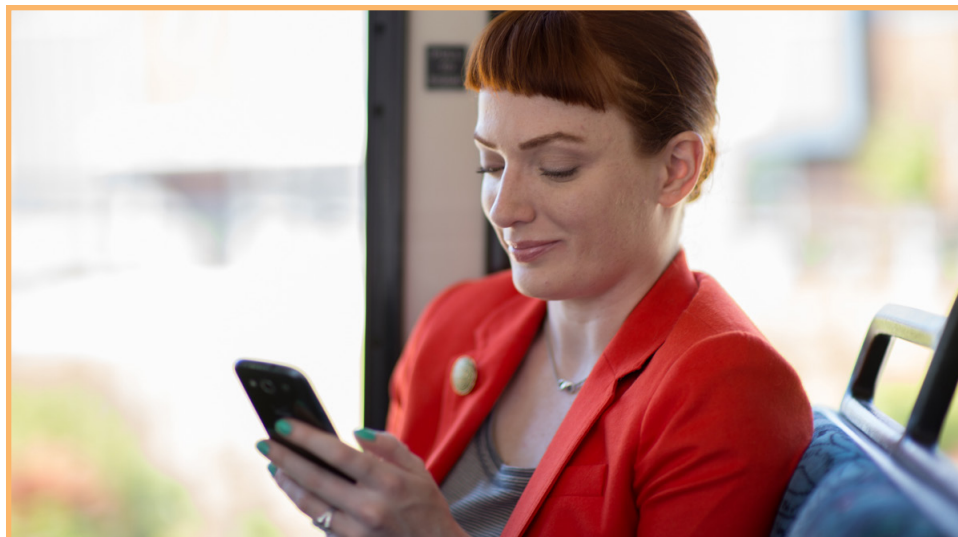
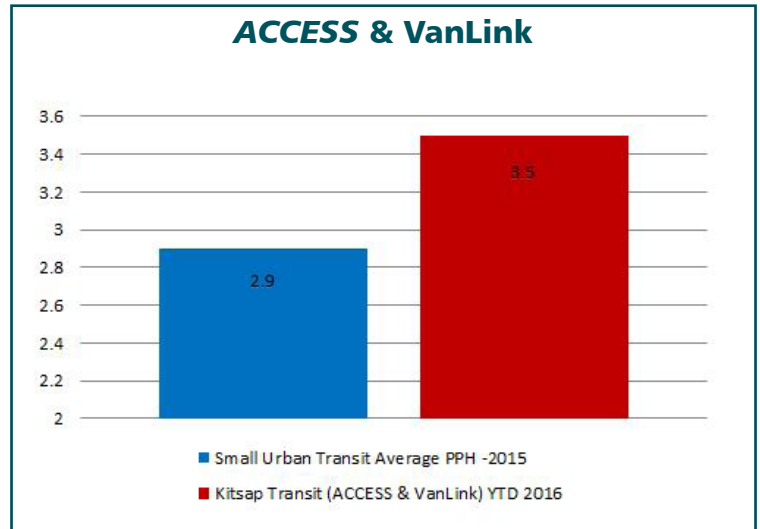
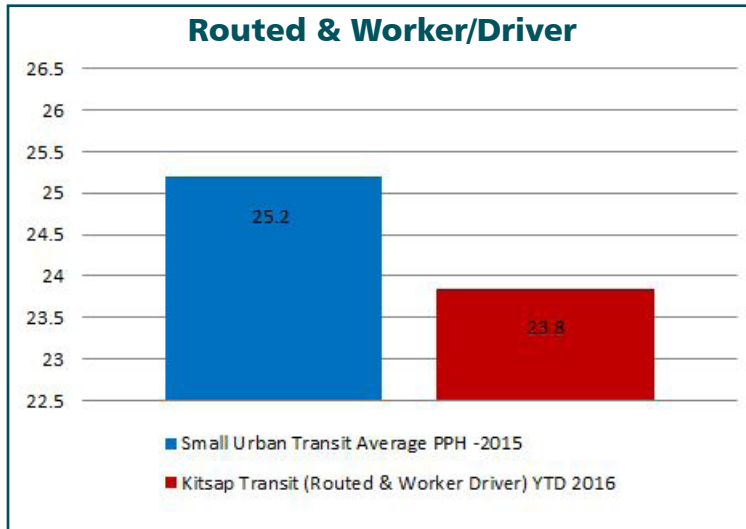
## Transfer Percentage By Quarter

TRANSFERS	Quarter Comparison				YTD PERCENTAGE
	Q1 2016	Q2 2016	Q3 2016	Q4 2016	
Between KT and WSF using ORCA	21%	21%	21%	21%	21%
Between KT and other transit agencies* using ORCA	4%	4%	4%	5%	4%
Between KT vehicles using ORCA	59%	58%	58%	59%	59%
Between KT vehicles using cash paper transfer	16%	17%	17%	16%	16%

\*Includes transfers between KT and Pierce, Metro, Community or Sound Transit made within two hours.

## Passengers Per Hour Systemwide

### Comparison 2016 Passenger per Hour to Small Urban Transit Average



## Passengers Per Hour Systemwide

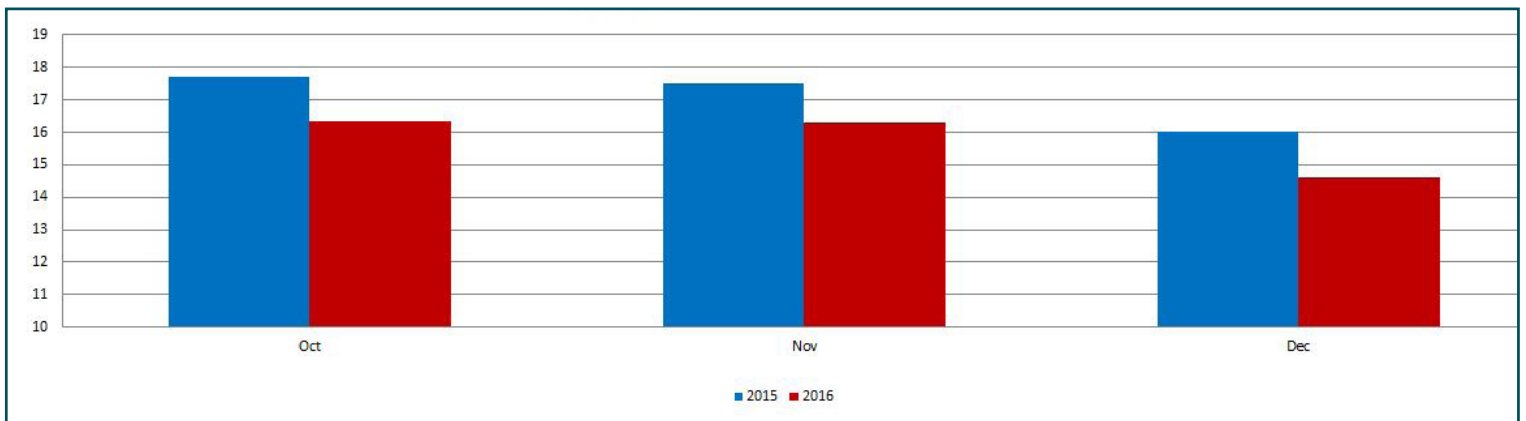
### Passengers Per Hour By Quarter: Weekdays

AVERAGE PASSENGERS PER HOUR: WEEKDAYS*	Quarter Comparison				
	Q1 2016	Q2 2016	Q3 2016	Q4 2016	2016 Average
Routed	24.0	23.9	23.3	23.0	23.6
ACCESS & VanLink	3.6	3.6	3.5	3.3	3.5
Worker/Driver	27.9	25.4	24.0	24.4	25.4
Foot Ferry	82.1	86.1	91.9	82.3	85.6
Vanpool	7.4	6.8	6.8	7.3	7.1
<b>Systemwide TOTAL AVERAGE</b>	<b>16.5</b>	<b>16.0</b>	<b>15.9</b>	<b>15.8</b>	<b>16.1</b>

\*Total passengers divided by hours of revenue service

### Comparison 2015 vs. 2016: Weekdays

**Systemwide Weekday  
Average Passengers Per Hour by Month**





## Passengers Per Hour Systemwide

### Passengers Per Hour By Quarter: Saturday

AVERAGE PASSENGERS PER HOUR: SATURDAY*	Quarter Comparison				
	Q1 2016	Q2 2016	Q3 2016	Q4 2016	2016 Average
Routed	16.1	15.7	15.1	13.90	15.1
ACCESS & VanLink	3.8	3.9	4.3	3.40	3.6
Foot Ferry	39.0	42.7	64.4	27.60	42.3
<b>Systemwide TOTAL AVERAGE</b>	<b>11.8</b>	<b>11.7</b>	<b>12.5</b>	<b>9.80</b>	<b>15.6</b>

\*Total passengers divided by hours of revenue service

### Comparison 2015 vs. 2016: Saturday

**Systemwide Saturday  
Average Passengers Per Hour by Month**

