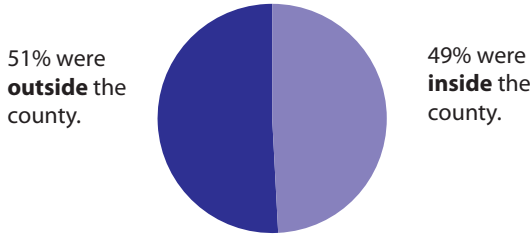


CONNECTING WORKERS TO JOBS

HALF OF THE JOBS HELD BY KITSAP COUNTY RESIDENTS ARE **OUTSIDE** THE COUNTY.

Kitsap County residents held 84,798 jobs in 2014.



Source: Census Bureau

SEATTLE OUTPACES BREMERTON AS THE TOP WORK DESTINATION FOR KITSAP RESIDENTS WITH **JOBS**.

Top 10 places where Kitsap County residents were employed, 2014

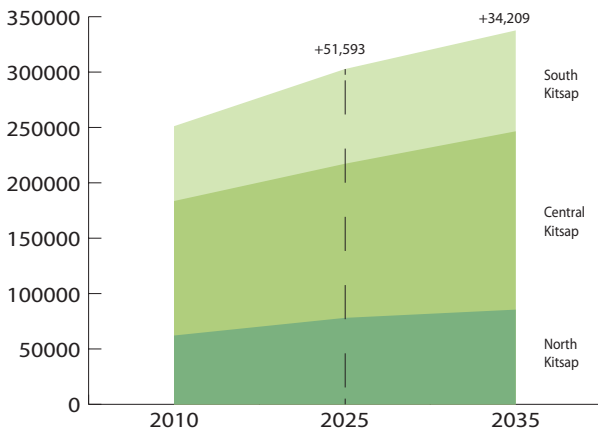
| City | Jobs | Share (%) |
|--------------|--------|-----------|
| Seattle | 14,088 | 16.6% |
| Bremerton | 10,576 | 12.5 |
| Silverdale | 7,573 | 8.9 |
| Bainbridge | 4,569 | 5.4 |
| Poulsbo | 4,284 | 5.1 |
| Port Orchard | 3,986 | 4.7 |
| Tacoma | 2,442 | 2.9 |
| Bellevue | 2,219 | 2.6 |
| Suquamish | 1,268 | 1.5 |
| Gig Harbor | 1,214 | 1.4 |

More than 28 percent of jobs held by Kitsap County residents were located in King County.

Source: Census Bureau

BY 2025, KITSAP WILL **GAIN OVER 50,000 RESIDENTS**, BUT **ONLY 20,000 JOBS**.

Kitsap County population

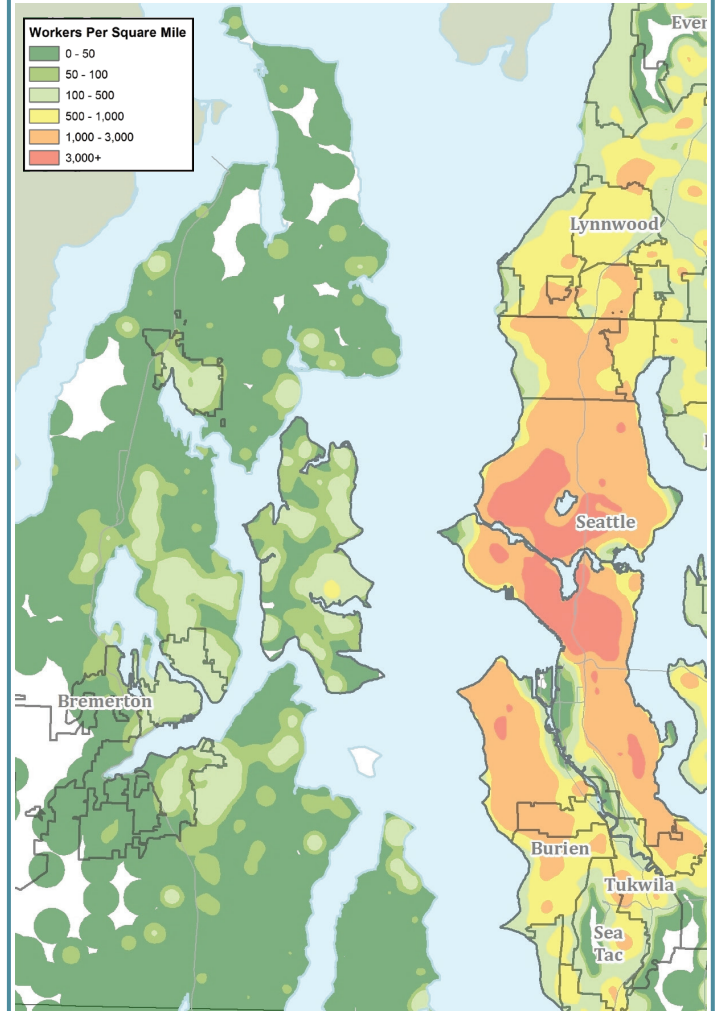


Source: Puget Sound Regional Council

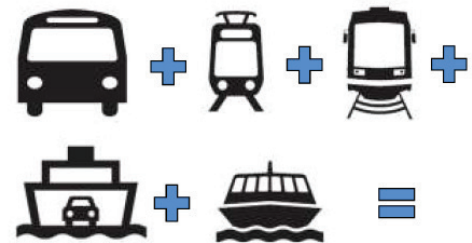
1 IN 6 KITSAP WORKERS IS EMPLOYED IN SEATTLE, OR **14,088** KITSAP RESIDENTS.

In 2014, there were 14,088 Seattle workers from Kitsap County, up from 10,415 in 2006. Seattle had 544,500 jobs in 2014; by 2025, the city is forecast to gain 80,000 more jobs.

Where Seattle workers lived, 2014



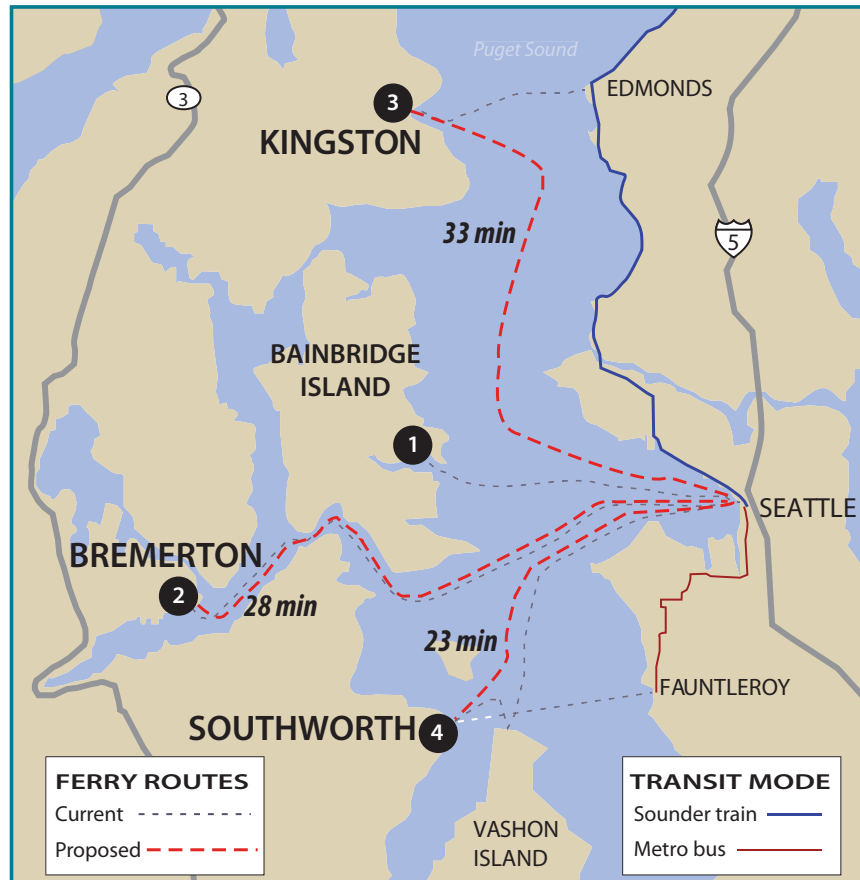
HOW DID THEY GET TO WORK?



54% RELIED ON PUBLIC TRANSIT

NOTE: Census Bureau's On The Map tool reports jobs held in the second quarter and does not count certain jobs, such as uniformed military, jobs paid purely on commission and unincorporated self-employed.

FAST-FERRY ROUTES



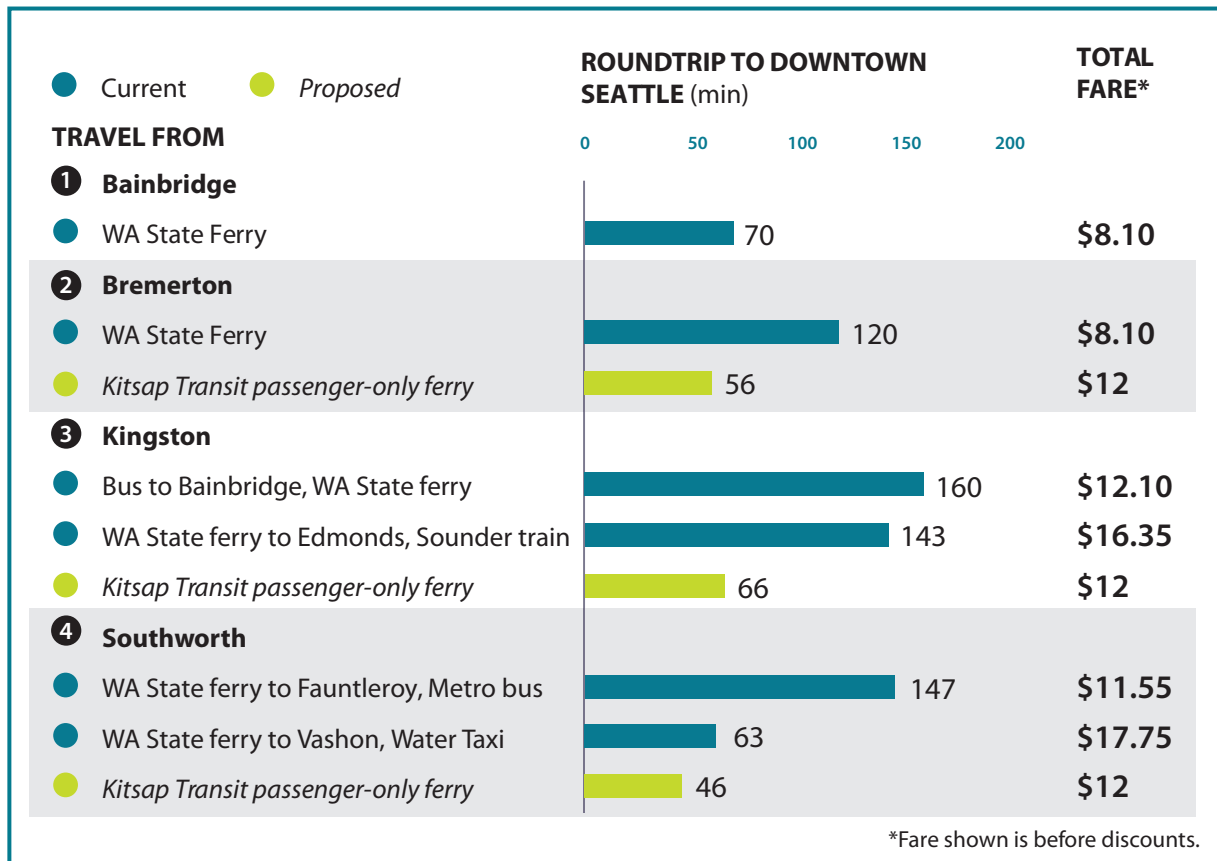
Implementation Schedule

| Route | Proposed Service Start |
|------------|------------------------|
| Bremerton | July 2017 |
| Kingston | July 2018 |
| Southworth | July 2020 |

Vessel Departure Frequency

| Route | Departure Frequency |
|------------|---------------------|
| Bremerton | 70 Minutes |
| Kingston | 90 Minutes |
| Southworth | 60 Minutes |

TIME & COST SAVINGS



FARES

| Fare Type | Round-Trip Price |
|----------------------------|------------------|
| Full Fare | \$12.00 |
| Reduced Fare* | \$6.00 |
| Full-Fare Monthly Pass | \$10.50 |
| Reduced-Fare* Monthly Pass | \$5.25 |

* Eligible seniors, disabled, youth and low-income riders.

Discounted Fares

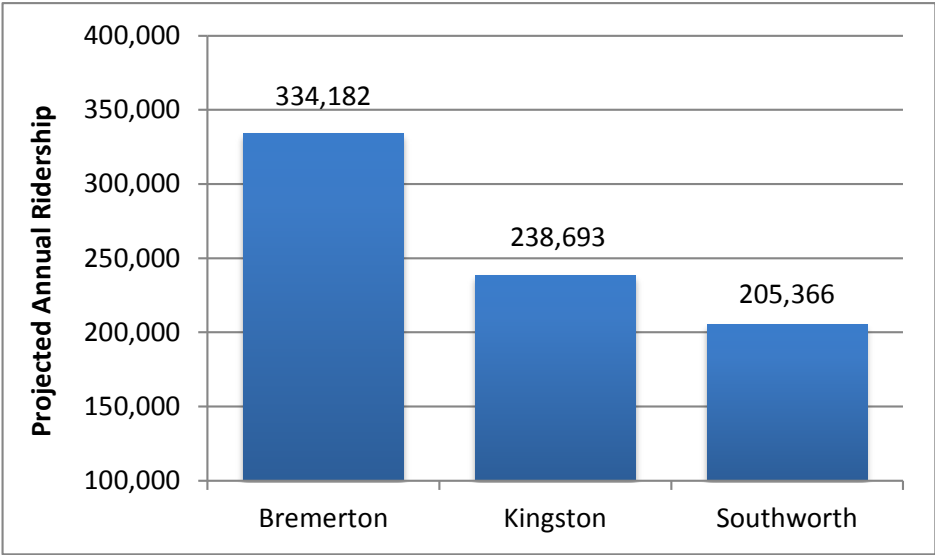
Kitsap Transit

- ✓ Seniors
- ✓ Disabled
- ✓ Medicare
- ✓ Youth
- ✓ **Low Income**

Washington State Ferries

- ✓ Seniors
- ✓ Disabled
- ✓ Medicare
- ✓ Youth

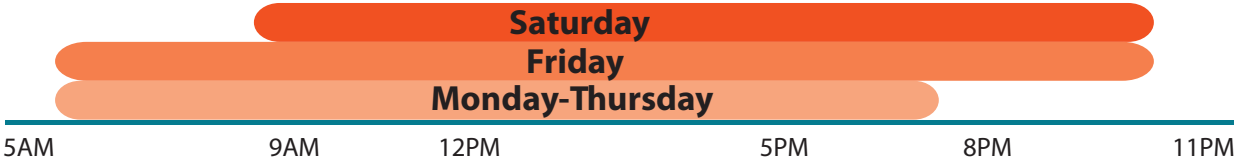
RIDERSHIP



SCHEDULE

May-September

sample schedules for the new routes



October-April



The extended schedule allows residents to visit Seattle for:

- ✓ Employment
- ✓ Dining
- ✓ Sporting Events
- ✓ Medical Services
- ✓ Entertainment
- ✓ Educational Opportunities



COMMUNITY BENEFITS

- ✓ One-time real estate benefits of nearly \$10 million
- ✓ \$7.5 million in annual travel savings
- ✓ \$1.8 million in general economic benefits



Kitsap Transit's proposed sales tax can **only** be spent on ferry service. If voters approve the tax, funding for Kitsap Transit's existing foot ferries would be shifted to this new source of revenue.

That would free up about **\$1.5 million** for bus service.

That would buy more than **23,000 hours** of service annually.

