

# Southworth Fast Ferry Update

Community Meeting

October 26, 2019

# Agenda

- Background
- Ferries
- Southworth & Seattle Docks
- Operating agreement with WSDOT
- Development of ferry schedules
- Bus service to Southworth ferry terminal
- Solicit feedback from community

# Kitsap Votes for Fast-Ferry Service

In 2016, Kitsap County voters approved a sales-tax increase to support passenger-only ferry service to Seattle from Bremerton, Kingston and Southworth.



[Video: A Decade of Wake Research](#)



[Video: Finest: A Ferry Reborn](#)



\*Estimate

# Southworth: Bow-Loading Vessels



Two 250-passenger vessels under construction

- First one anticipated to arrive in April or May
- Second one anticipated to arrive 90 days later



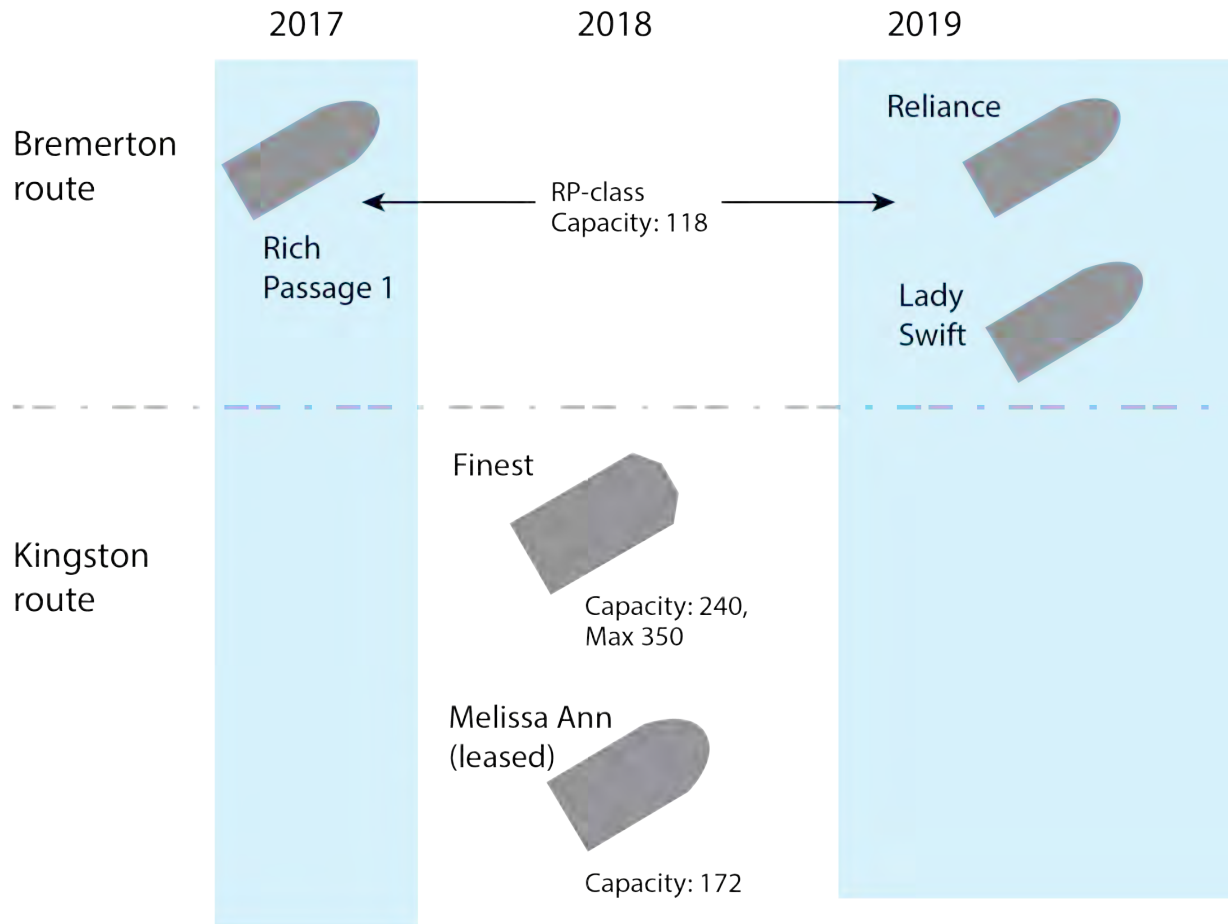


*Vessel body  
Sept. 2019*



*Pilothouse  
Oct. 2019*

# Phased Launch of Fast-Ferry Service



## **BREMERTON**

Kitsap Transit has tested a two-boat service on the Bremerton/Seattle route.

Scientists must determine if two-boat service will cause harm to the beaches in Rich Passage. They expect to deliver a report in early 2020.

## **KINGSTON**

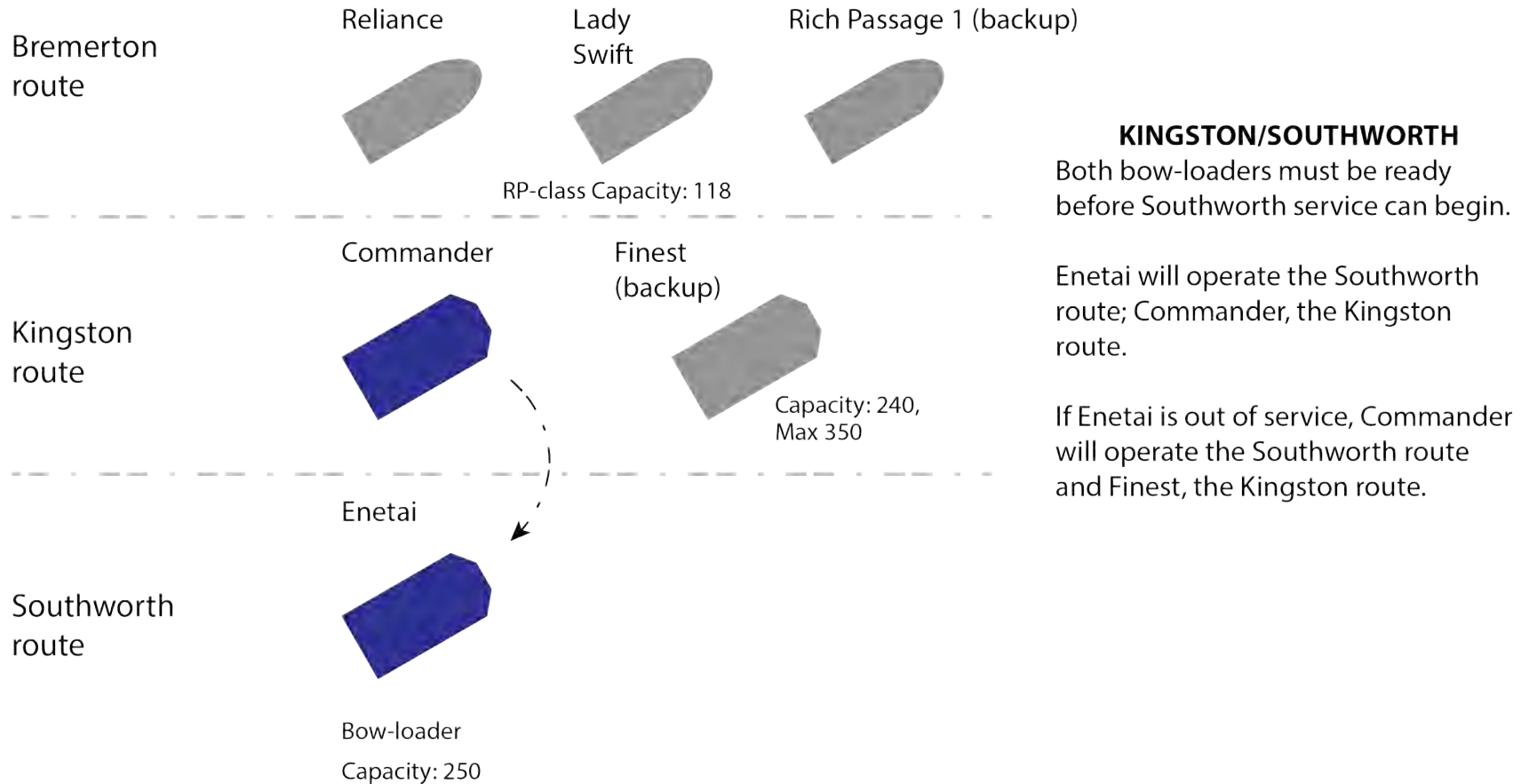
Finest is the primary vessel currently on the Kingston route, and Melissa Ann is the backup vessel.

In 2020 Kitsap Transit plans to return the Melissa Ann to its owner once it has received the first bow-loader.

# Vessels, by Route in Future

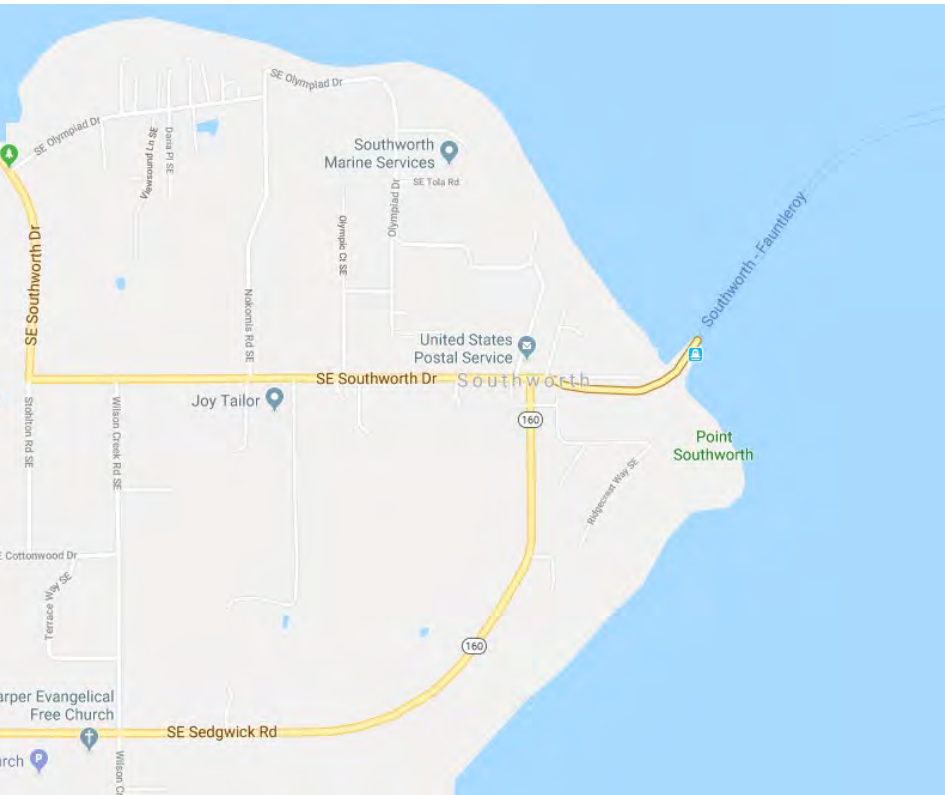
Existing

Under Construction





# Southworth Dock



From Washington State Ferries 2040 Long Range Plan:  
Proposed addition of a second slip at Southworth in 2022-2027, potentially in partnership with Kitsap Transit, for passenger-only ferry use. Project is not funded at this point.



# WSDOT Operating Agreement

- Protocols for Kitsap Transit vessels to access dock in Southworth
- Passenger queuing, staging and other management needs
- Coordination of schedules to avoid conflicts with WSF auto ferry schedule

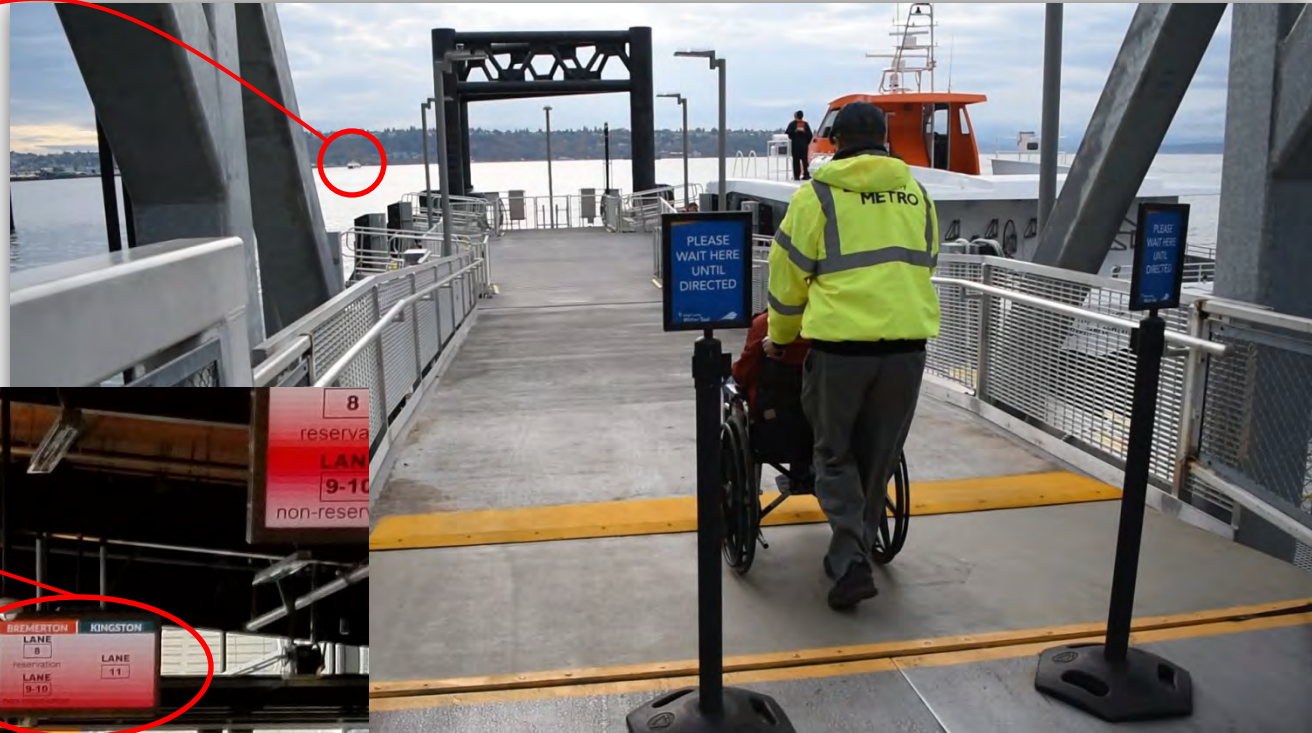
# Coordination of Ferry Schedules

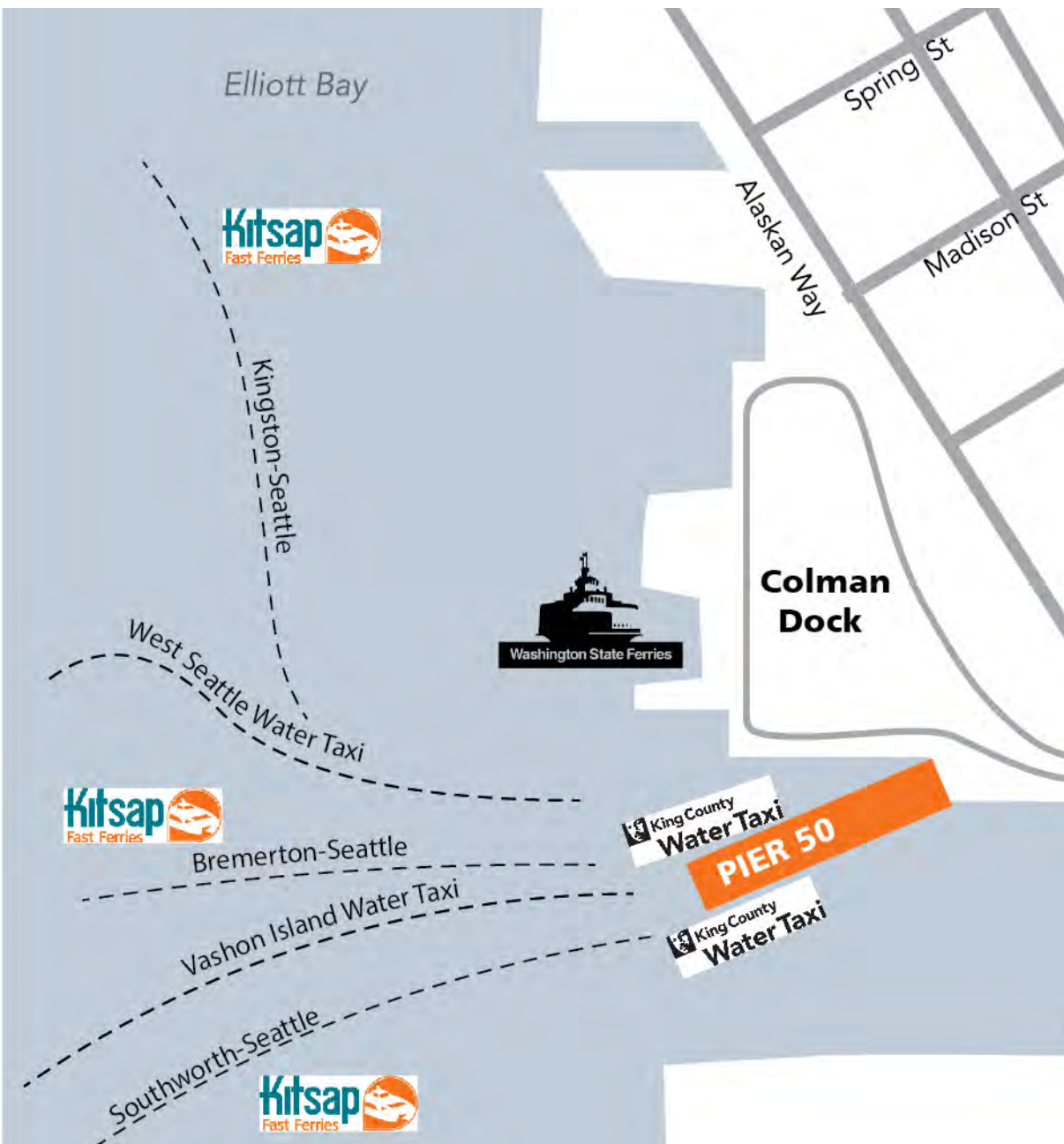
- Evaluate dock availability in both Southworth and Seattle
- Solicit community input on desired arrival times in Seattle and Southworth
  - Kitsap Transit will survey the community

# Seattle Dock

King County Water Taxi  
arriving. Bremerton  
Fast Ferry loading.

Monitors display  
queuing lanes for 4  
existing ferry routes.





## Dock Availability Is Limited

**Five** passenger-only ferry routes compete for two slips at dock run by King County



# Southworth Service

- Crossing time: Estimated to be 21-26 minutes, depending on dock availability
- Weekdays: Six roundtrips a day year-round
- Summer schedule: Weekdays + Saturdays
- No reservation system
- No food/beverage service
- Bikes: 26 racks available, must fit in rack

# Bus Service to Southworth Ferry

- Determine where buses can stage and drop-off/pick-up at Southworth without disrupting WSF operations
- Pay KT bus fare with *ORCA E-purse*, you transfer to Fast Ferry to Seattle for no extra charge
- Pay Fast Ferry fare to Kitsap with *ORCA E-purse*, you transfer to KT bus for no extra charge
- **Feedback:** Would you ride a KT Bus if we offered additional bus service to the ferry terminal?

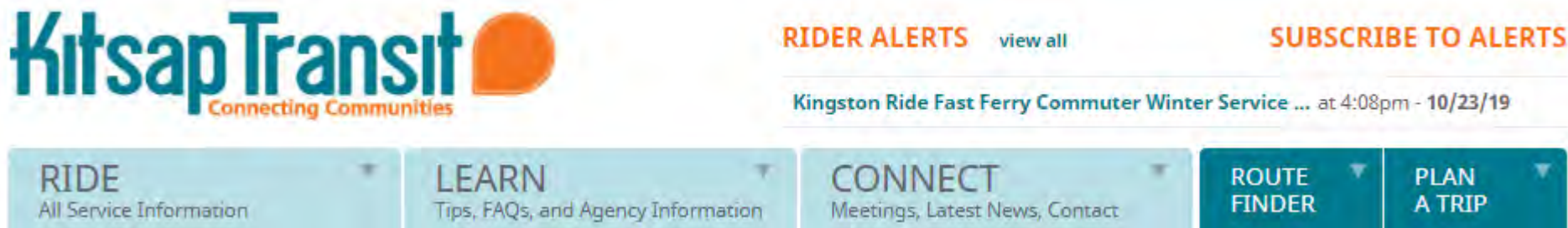
# Park & Rides



**Feedback:**  
Would you use  
one of our Park  
& Rides to ride a  
bus or carpool to  
the Southworth  
Ferry Terminal?

# Community Feedback

- Take a short survey:  
[surveymonkey.com/r/SWFFUpdate](https://surveymonkey.com/r/SWFFUpdate)
- Sign up for Rider Alerts



- Follow us on social media (@KitsapTransit)





# QUESTIONS?

- John Clauson  
Executive Director  
[JohnC@kitsaptransit.com](mailto:JohnC@kitsaptransit.com)
- Sanjay Bhatt  
Marketing & Public Information Director  
[SanjayB@kitsaptransit.com](mailto:SanjayB@kitsaptransit.com)