

2022 - 2027

TRANSIT DEVELOPMENT PLAN

Kitsap
Transit



Table of Contents

Contents

Glossary	3
Section I: Organization	3
Section II: Physical Plant	6
Section III: Service Characteristics	7
Section IV: Service Connections	11
Section V: Activities in 2021	13
Section VI: Proposed Action Strategies, 2022 – 2027	15
Section VII: Capital Planning	18
Section VIII: Operating Data, 2021 – 2027	19
Section IX: Operating Revenues and Expenditures, 2021 – 2027	21
Section X: Transit System Vision Map	22
Appendix I: Routed System Map	23
Appendix II: Equipment & Facilities Asset Inventory	24
Appendix III: Fleet Inventory	25
Appendix IV: SK Ride Service Area Map	26
Appendix V: Kingston Ride Service Area Map	27
Appendix VI: Kingston Fast Ferry Commuter Service Area Map	28
Appendix VII: Southworth Fast Ferry Ride Service Area	29

Kitsap Transit

60 Washington Avenue, Suite 200, Bremerton, WA 98337

Date of Public Hearing: September 6, 2022

Pursuant to RCW 35.58.2795

Glossary

ACCESS – Kitsap Transit’s ADA demand response bus service

ADA – Americans with Disabilities Act

APC – Automatic Passenger Counters

AVL – Automatic Vehicle Locator

BTC – Bremerton Transportation Center

CRA – Comprehensive Route Analysis

CTR – Commute Trip Reduction

DOD – Department of Defense

DSHS – Department of Social and Health Services

KT – Kitsap Transit

KTFF – Kitsap Transit Foot Ferry

LRTP – Long Range Transit Plan

NTD – National Transit Database

ORCA – One Regional Card for All regional fare payment card used on Puget Sound area transit systems and WSF

PSNS – Puget Sound Naval Shipyard

ROW – Right of Way

RRFP – Regional Reduced Fare Permit ORCA Card for qualified persons to ride for reduced cost at ½ the normal fare.

TAM – Transit Asset Management Plan

TIP – Transportation Incentive Program for Department of Navy employees to help reduce their daily contribution to traffic congestion and air pollution, as well as expand their commuting alternatives.

W / D – Kitsap Transit’s Worker/Driver program serving the PSNS and Bangor Naval Bases

WSF – Washington State Ferries

Section I: Organization

The Transit Development Plan (TDP) is reviewed annually and serves as a 5-year guide for Kitsap Transit. The TDP connects with the Long-Range Transit Plan (LRTP) as an implementation and progress report reflecting on progress made towards the Kitsap Transit Vision. The Kitsap Transit Vision map is found in Section X on page 22.

Kitsap Transit (KT) is a public transportation benefit area authority, authorized in Chapter 36.57A RCW, and located in Kitsap County, Washington. Kitsap Transit began providing public transportation services in early 1983. KT's system map appears in Appendix I, showing the extent of the agency's service area. Beginning in 2011, as the result of a change in state law, membership on the KT Board of Commissioners increased from nine to ten and now includes one non-voting member who represents the agency's labor unions. The nine voting members of the KT Board are

the three Kitsap County Commissioners; the mayors (or an appointed Council Member) of the four incorporated cities in Kitsap County: Bainbridge Island, Bremerton, Port Orchard and Poulsbo; a member of the Bremerton City Council, appointed by the Bremerton City Council President; and one at-large member selected by the Board Chair from among interested elected officials from the four cities in the agency's service area. All board members serve for the duration of their elected term of office, with the exception of the Bremerton City Councilmember, who serves for a one-year term, and the at-large member, who serves for a two-year term and is selected at the last meeting in December or the first meeting in January every other year.

Kitsap Transit added a Marine Services Department as a result of the approval of Proposition 1 in November 2016. The Proposition authorized the collection of 3/10 of a cent sales tax to support passenger-only Fast Ferry services to Seattle from Bremerton, Kingston and Southworth. Increases in service hours, mileage and ridership forecasts can be attributed to the planned service improvements associated with new ferry services and the implementation of recommendations from the Long-Range Transit Plan (LRTP) and the Comprehensive Route Analysis (CRA). New Fast Ferry service started in the summer of 2017 from Bremerton to Seattle; service began in late 2018 from Kingston to Seattle and began in March 2021 from Southworth.

Kitsap Transit's Board of Commissioners Goals for 2022

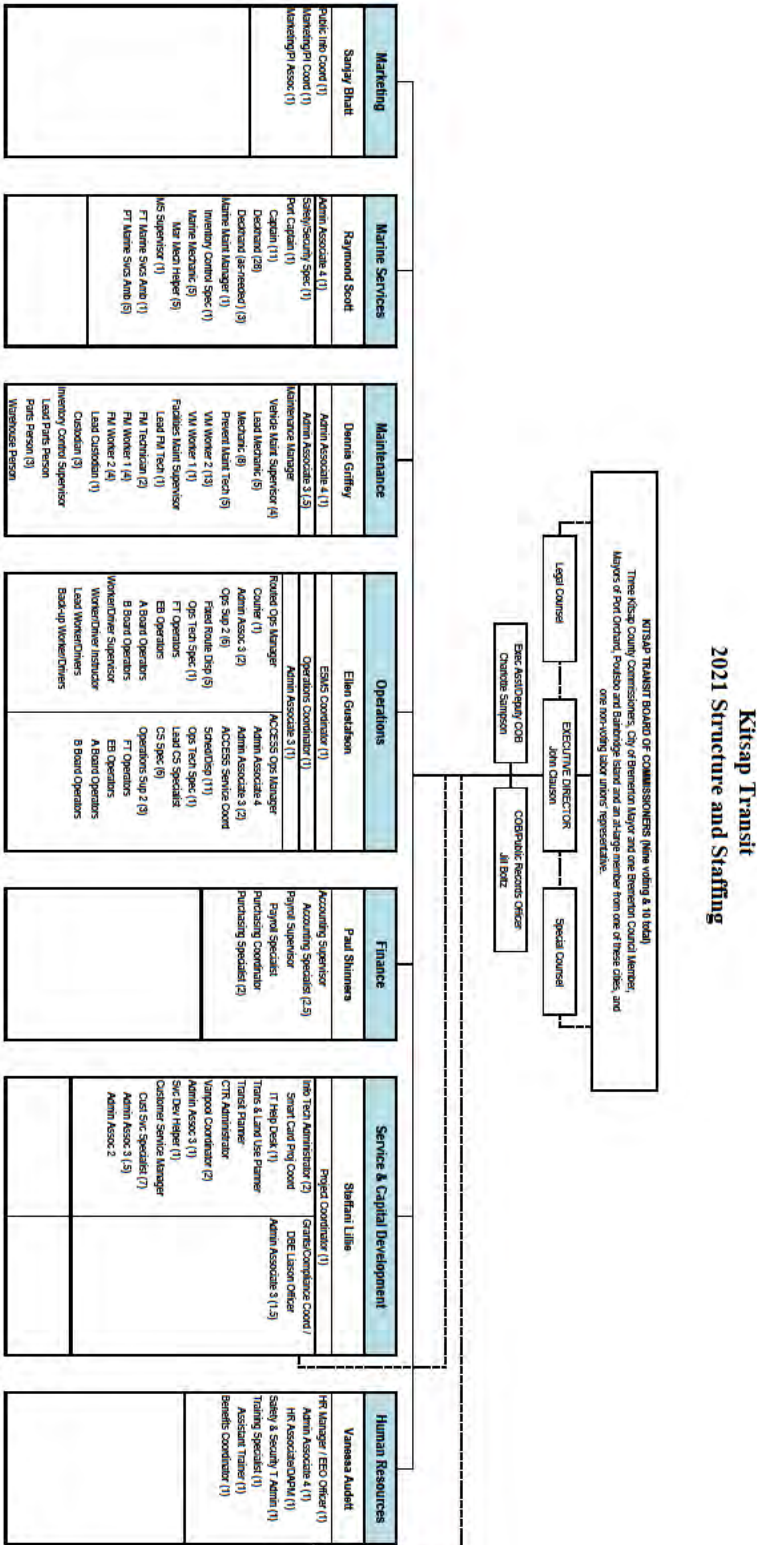
- Attain a 5% increase in ridership
- Hire 45 new operators
- Implement a 10% increase in service hours
- Complete design for electric vessel
- Alternatives analysis for siting of marine maintenance facility
- ROW acquisition for P&R in Poulsbo
- Better communication link between KT and community



Bremerton Transportation Center

2022 Organizational Chart for Kitsap Transit

CHART Update 1/25/2022



In 2021, Kitsap Transit employed full-time equivalent employees in the following departments:

3.0	Full-time equivalents in the Executive Division
233	Full-time equivalents in the Operations Division
	Of these:
128	were for Routed Service
84	were for ACCESS Service
21	were for Worker/Driver Service
55.5	Full-time equivalents in the Vehicle and Facilities Maintenance Division
24.0	Full-time equivalents in the Service Development Division
10.0	Full-time equivalents in the Finance Division
8.0	Full-time equivalents in the Human Resources Division
3.0	Full-time equivalents in the Capital Development Division
49.0	Full-time equivalents in the Marine Services Division
3.0	Full-time equivalents in the Marketing Division
388.5	Full-time equivalents as of 12/31/2021

Section II: Physical Plant

Kitsap Transit's administrative offices are located at 60 Washington Avenue, Suite 200 in Bremerton, WA, 98337. The agency's primary maintenance and operations facility is at 200 Charleston Boulevard, Bremerton, WA, 98312-4199. In addition, Kitsap Transit has a North Base at 21711 Vetter Road NW, Poulsbo, WA, 98370 and a South Base at 1430 Retsil Road, Port Orchard, WA, 98366. Routed and ACCESS operators report to the South Base and to the North Base for transit service in those areas.

Kitsap Transit also has a customer service office in the Bremerton Transportation Center (BTC), a major, multi-modal center serving buses, car ferries and passenger-only ferries, that opened in 2000 at 10 Washington Avenue in downtown Bremerton and a Call Center located in the Harborside Administration Bldg. A commuter-oriented, bicycle-storage facility, The Bike Barn at Bainbridge Island, opened in 1999 in the center of the Bainbridge Island Transfer Center. Renovations of The Bike Barn are completed (see cover page) and provide for an updated modern facility in line with current cycling standards.

The Appendices contain the completed forms for the state's public transportation management system for all Kitsap Transit's owned and contracted revenue vehicles and facilities.

Kitsap Transit owns 5 park and ride locations and leases 18 locations. The five owned locations are displayed below.

Name	Location	Stalls
Annapolis Ferry Terminal	1076 Beach Dr. E, Port Orchard	75
Georges Corner	27618 Hansville Rd NE, Kingston	225

Harper	10384 SE Sedgwick Rd, Port Orchard	462
North Viking Transit Center	21710 Vetter Rd NW, Poulsbo	265
Wheaton Way Transit Center	3915 Wheaton Way, Bremerton	162

Section III: Service Characteristics

In 2021, Kitsap Transit provided fixed route service, ADA-accessible demand response service (ACCESS), VanLink, Worker/Driver service, vanpool service, general public dial-a-ride service, on-demand and foot ferry service for parts of Kitsap County. Kitsap Transit's system map, in Appendix I, shows where Fixed Route service, On-Demand Ride services, and Kitsap Transit Foot Ferry (KTFF) service is offered.

The headways for routes that operated all day were usually one hour for local feeder routes and 30-45 minutes for trunk line routes. During commute hours, many of these all-day routes are also scheduled to meet Washington State Ferries (WSF) at the Bainbridge Island, Bremerton and Southworth terminals. Weekday service hours are from 4 a.m. to 10:00 p.m. This is later than prior years when all services were ended between 8:00 p.m. and 9:00 p.m.

In 2017, Kitsap Transit introduced the Bremerton to Seattle Fast Ferry service and two new routes connecting to that service in Bremerton. In late 2018, the Kingston Fast Ferry service began linking Kingston to Seattle with six weekday round trips and two new routes. Kitsap Transit also began to offer an on-demand service linking areas around Kingston to the new ferry service.

On Saturdays, 18 fixed routes were operated on one-hour headways between 10 a.m. and 5:30 p.m. The Port Orchard to Bremerton Foot Ferry operates every 30 minutes on Saturdays. In 2019, Kitsap Transit implemented a 30-minute service frequency between Silverdale and Bremerton. In the summer of 2019 service frequency was increased on the Poulsbo to Bainbridge Island route to 30-40 minute frequency.

Due to COVID-19 service was reduced to meet passenger demand. Specific trips and services have been restored as requested throughout the pandemic. Existing service levels can be found at www.kitsaptransit.com

2021 marked the 78th year of the Worker/Driver program serving Puget Sound Naval Shipyard and Naval Base Kitsap. Kitsap Transit operates 35 Worker/Driver routes.

Kitsap Transit continues to work towards restoring Sunday bus services as directed by the Board of Commissioners in 2021. Restoring this service is a top priority for Kitsap Transit

Fares:

Cash fares are \$2 on Routed buses and the Kitsap Transit Foot Ferry (KTFF), payable with cash or E-purse funds loaded on an ORCA card. Cash fares are \$1 on Routed buses and the KTFF with a Reduced Fare or Regional Reduced Fare-qualified ORCA card or a Regional Reduced Fare Permit (RRFP) Card. Cash fares on *ACCESS* (demand response) buses and Dial-A-Ride services are \$2, and there is a \$1 surcharge for outlying area service in *ACCESS*. VanLink service is \$2.00 as well.

The Fast Ferry fares are below.

Fast Ferries	Eastbound	Westbound	Monthly Pass	
	Per trip fare		Fast Ferry only	Kitsap Transit Bus / Fast Ferry
Adult	\$2.00	\$10.00	\$168.00	\$196.00
Reduced Fare	\$1.00	\$5.00	\$84.00	\$98.00

Reduced Fare Eligibility

Riders who meet the following criteria are eligible for a Reduced Fare ORCA Card:

- Youth: Age 6-18 with proof of age. Beginning June 1, 2021, Puget Sound area youth (ages 6–18 years) have been able to get their first ORCA card at no charge. Replacing a lost or stolen card will cost the user \$5. The action to waive the previous \$5 fee for a blank ORCA youth card makes permanent a promotion in place since December 2020.
- Low Income: Department of Social and Health Services (DSHS) low income, with proof of DSHS status and family size.

Riders who meet the following criteria are eligible for a Regional Reduced Fare ORCA Card:

- Medicare Card holder - A valid Medicare card issued by the Social Security Administration (Temporary)
- Senior – Age 65 or older with valid ID and completed Regional Reduced Fare Permit Application. First card is free. Replacement card is \$3.
- Disability – A completed Regional Reduced Fare Permit Application (first card is free, replacement card is \$3) and ONE of the following forms of verification:
 Verification of receipt of Social Security Disability Benefits or Supplemental Security Income Benefits due to disability (Temporary)
 Certification by the Veteran’s Administration at a 40% or greater disability level
 Valid Medicare card issued by the Social Security Administration (Temporary)
 Valid Regional ADA Paratransit Card
 Valid ADA Paratransit card from outside the region (Temporary)
 Proof of current enrollment in a Washington State Individual Educational Program (IEP) (Temporary)

Monthly Passes

Monthly Bus Pass - \$50

Valid on KT Routed service, *ACCESS* (eligible riders only) and KTFF.

Fast Ferry Pass - \$168 for Fast Ferry Only and \$196 for Bus and Fast Ferry.

Reduced Fare Monthly Bus Pass - \$25

Reduced Fast Ferry Pass - \$84 for Fast Ferry Only and \$98 for Bus and Fast Ferry.

Reduced fare is valid on KT Routed service, *ACCESS* (eligible riders only), Fast Ferry and KTFF. Riders must qualify for and have a Reduced Fare or Regional Reduced Fare-qualified ORCA card to purchase.

Regional Monthly Puget Pass

Valid for fare on Kitsap, Everett, Pierce, Metro, Community and Sound Transit(s) up to the trip value. When riding a service with a higher fare, the difference can be paid with cash or via ORCA E-purse. Many trip values are available. The most common for KT riders are:

- Puget Pass - \$2 each fare or \$72 a month or \$360 for eastbound and westbound with Fast Ferry service
- Reduced Fare Puget Pass - \$1 Fare or \$36 a month or \$180 for eastbound and westbound with Fast Ferry service

Riders who use WSF can add a monthly ferry pass to their ORCA card in combination with any of the passes above to pay their fare on all the systems they ride. There is also now a Regional all-day pass that can be purchased and loaded onto an Orca card for \$8.00. Reduced fare for Senior/Disabled is \$4.00 and must be loaded onto an RRFOP Orca card.

Employees of the DOD who commute to work by bus, vanpool, or ferry (walk-ons or passengers in a vanpool on WSF) are eligible to be reimbursed up to the current TIP subsidy amount, per month, for their actual commuting costs. The reimbursement allows free rides on Routed bus, Worker/Driver bus, vanpool (up to the current TIP subsidy amount per the TIP guidelines), KTFF or *ACCESS* service.

Free Riders

- Child - Up to four (4) children, age five (5) or under, accompanied by a fare-paying, responsible individual -- free of charge Any of the region's law enforcement personnel and fire fighters, in uniform or out of uniform, inside or outside of their jurisdiction.
- Public Safety Officer - Any of the region's law enforcement personnel and firefighters in or out of uniform, on or off duty and inside or outside of their jurisdiction -- free of charge with identification available to show driver or deckhand.
- Personal-care attendants traveling with eligible disabled customers.
- Bikes ride free on Kitsap Transit buses and the Kitsap Transit Foot Ferry, limited to space available.

Vanpools

Vanpool rates are determined by the size of the van, the number of miles traveled on the vanpool route and the number of riders on board. A full listing of vanpool fares and information can be viewed on our website at <http://www.kitsaptransit.com/vanpool>

Worker/Driver Buses

The one-way cash fare on Worker/Driver (W/D) buses is \$3.00, payable with cash or ORCA card E-purse. W/D riders can also pay their fare with a \$97 KT W/D monthly bus pass loaded on an ORCA card. Monthly passes are valid on W/D routes as well as on Routed, *ACCESS* (eligible riders only) and the KTFF. Most W/D fares are paid by the DOD.



Future Silverdale Transit Center



Section IV: Service Connections



KT provides bus connection services at the following transportation facilities:

- Kitsap Transit's Fast Ferry arrival location in Seattle is a short distance from King County's Bus Routes 21, 55, 56, 57, 113, 120, 121, 125 C Line Rapid Ride and the West Seattle and Vashon Island ferry routes.
- Bremerton Transportation Center (BTC) with connections to WSF, KTFF, Mason Transit and other KT bus routes
- Bainbridge Island Ferry Terminal with connections to WSF, Clallam Transit and other KT bus routes
- Kingston Ferry Terminal with connections to Jefferson Transit, WSF and other KT bus routes
- Southworth Ferry Terminal with connections to WSF
- Port Orchard Ferry Dock with connections to KTFF and other KT bus routes
- Annapolis Ferry dock with connections to KTFF
- West Bremerton Transfer Center with connections to other KT bus routes
- East Bremerton Transfer Center with connections to other KT bus routes
- Silverdale Transfer Center with connections to other KT bus routes
- North Viking Transit Center with connections to other KT bus routes, Clallam and Jefferson Transit
- Purdy park & ride lot in Pierce County with connections to Pierce Transit routes 100 and 102

In addition, KT provides open-door service to many of the middle and high schools in its service area, as well as the Bremerton and Poulsbo branches of Olympic College. All but one of the W/D buses and many vanpool vans serve Puget Sound Naval Shipyard (PSNS)/Naval Base Kitsap. Other vanpools serve Naval Base Bangor along with one W/D bus.

The **Bainbridge Island Ride (BIRide)** service started in June 2014. The service provides curb to curb dial-a-ride service to the general public. It operates Monday-Friday from 8:45 a.m. to 3:30 p.m. and Saturdays from 9:00 a.m. to 6:00 p.m. More information can be found at: <http://www.kitsaptransit.com/service/routed-buses/bi-ride>

South Kitsap Ride (SKRide) service commenced in 2015. It offers an on-demand style of bus service that utilizes both traditional call-in requests and an application that can be downloaded to a phone or computer to request rides in the McCormick Woods area of Port Orchard, parts of Bremerton and the County. The service offers connections to Routes 4 and 5. More information can be found at: <http://www.kitsaptransit.com/service/routed-buses/sk-ride>

Kingston Ride services begin operation in June 2017. The service is based upon a similar model as the South Kitsap Ride bus service. The Kingston Ride will offer connections to WSF ferries at Kingston and Kitsap Transit routes 91 and 92 serving Bainbridge Island and Suquamish. More information can be found at: <http://www.kitsaptransit.com/service/routed-buses/kingston-ride>

Kingston Ride Fast Ferry Commuter service began operation in November 2018. The Fast Ferry Commuter Service is a shared ride shuttle to and from Kingston Ferry Terminal. More information can be found at: <http://kitsaptransit.com/service/routed-buses/kingston-ride-fast-ferry-commuter>

In 2021, Kitsap Transit started the **Southworth Ride Fast Ferry Commuter** service to connect with the new Passenger Only Ferry to Seattle which began service in March 2021. <https://www.kitsaptransit.com/service/routed-buses/southworth-ride-fast-ferry>

Nollwood Dial-A-Ride connects the Nollwood and Werner Road area with the West Bremerton Transfer Center. <https://www.kitsaptransit.com/service/routed-buses/nollwood-dial-a-ride>

Kitsap Transit operated Routed service and Worker/Driver service to 23 park & ride lots throughout Kitsap County in 2021.



Propane Powered ACCESS bus

Section V: Activities in 2021

In 2021, we addressed RCW 47.04.280 Transportation System Policy Goals through the following action strategies:

1. Preservation: To maintain, preserve, and extend the life and utility of prior investments in transportation systems and services.

- Completed reconstruction of the Annapolis Foot Ferry dock to achieve ADA standards
- Continued replacing our older fleets with 1 new 40' electric bus and 6 propane coaches
- Ordered 23 Ultra-low NOx Ford/StarTrans propane Access coaches, 11 Electric Gillig 35' Routed coaches, 5 Diesel Gillig 40' Routed coaches and 5 Electric Gillig 40' Worker Driver suburban coaches
- Conducted preventive maintenance on 9 ferry vessels including engine and jet replacements
- Maintained fund 3 months operating reserve to improve Kitsap Transit's ability to respond to changes in sales tax revenue
- Continued to achieve high standards in preventative maintenance of our revenue vehicles with almost no missed trips
- Maintained \$6.0 million in capital reserve to support ongoing capital improvement projects

2. Safety: To provide for and improve the safety and security of transportation customers and the transportation system.

- Implemented the Entry-Level Driver Training Program to comply with the US DOT and FMCSA regulations
- Continued upgrading park and ride camera systems to improve rider safety
- Updated the Kitsap Transit Safety and Security Plan

3. Mobility: To improve the predictable movement of goods and people throughout Washington State.

- Continued to provide service on all modes while increasing service levels based on operator availability
- Resumed Annapolis Ferry services, post pandemic, upon passenger demand increases

4. Environment: To enhance Washington's quality of life through transportation investments that promote energy conservation, enhance healthy communities and protect the environment.

- Began Electric Bus Infrastructure Construction of 12 electric charging units at Charleston Base for electric buses
- Add bullet for ESMS ISO certified – ferry dock
- Secured funding to install two inductive chargers at the new Silverdale Transit Center



35' All Electric Routed Bus

5. Stewardship: To continuously improve the quality, effectiveness, and efficiency of the transportation system.

- Adjusted routed service to meet fluid demand changes as the progression of the pandemic evolved during the COVID-19 pandemic
- Coordinated with seven transit agencies to finalize the hardware and design structure for the next generation fare payment system to be rolled out in 2022
- Implemented a blog webpage to inform passengers and the community about upcoming efforts
- Evaluated the system network at pandemic levels and worked strategically with customers on where and how to restore services
- Started the Long-Range Transit Plan process with the Board and the Community
- Early scoping process with the Federal Transit Administration for a long-term solution for ferry docking in Downtown Seattle

Section VI: Proposed Action Strategies, 2022 – 2027

The proposed changes in Section VI below are action strategies that reflect upon the following state Transportation Service Objectives.

1. Preservation: To maintain, preserve and extend the life and utility of prior investments in transportation systems and services.

- Continue to strive to restore Kitsap Transit service levels in all modes to pre-COVID-19 levels to meet community needs (bus driver shortage challenges)
- Conduct ongoing heavy maintenance on Fast Ferry and local ferry vessels
- Continue to purchase electric coaches to replace diesel powered coaches, when able to be supported by the county's electrical infrastructure
- Replace ACCESS buses with propane powered vehicles and if needed for expanded services because of increased demand
- Electrical infrastructure growth project at Charleston Base and planning the North Base conversion
- Maintain system state of repair using our TAM Plan and long-range plans
- Replace non-revenue vehicles as needed throughout the system
- Rebuild 6 Gillig Phantom coaches
- Replace VanLink and Vanpool program vehicles as required to maintain reliability

2. Safety: To provide for and improve the safety and security of transportation customers and the transportation system.

- Continue to receive no deficiencies during security inspections and audits
- Maintain current security standards and update information to be included in the Kitsap County Hazard Mitigation Plan
- Perform yearly emergency drills
- Continue to meet and exceed U.S. Coast Guard regulatory requirements for ferry vessel operations
- Purchase bus operator simulator to improve operator performance and training
- Order new buses equipped with on-board video
- Continue to apply for applicable safety and security grants
- Continue the New Operator Training Program and implement the updated curriculum from WSTIP/TATPCO which is based on Safety Management System principles
- Continue the Advanced Operator Training Program
- Continue to evaluate and update security technology as needed throughout the Kitsap Transit System
- Conduct annual Emergency Operation Center drill in cooperation with Kitsap County Department of Emergency Management, to ensure readiness
- To receive no deficiencies during safety inspections and audits
- To upgrade systems on buses so that analytics for driver performance can be captured and additional training can be accomplished

- To ensure the Agency Safety Plan conforms to with the regulations related to the Bipartisan Infrastructure Law
- To meet outlined targets consistent with the Agency Safety Plan through continued training, educational programs, and safety audits.
- Implement the New Operator Training Program and implement the updated curriculum from WSTIP/TATPCO which is based on Safety Management System principles

3. Mobility: To improve the predictable movement of goods and people throughout Washington State.

- Complete the Silverdale Transit Center to improve service to the Silverdale Regional Center
- Conclude the ROW acquisition, design and construction of a new Park and Ride along the Highway 16 corridor to support reduced traffic in Gorst
- Move forward with the ROW acquisition, design and construction of a new Park and Ride along the Highway 104 and Bond Road to support reduced traffic in Kingston
- Complete park and ride in Silverdale / West Bremerton
- Receive and put in service two new electric POF vessels
- Complete long-range plan for the Seattle Waterfront Passenger Terminal
- Implement new technology for ride services passenger communications
- Implement Sunday service

4. Environment: To enhance Washington's quality of life through transportation investments that promote energy conservation, enhance healthy communities, and protect the environment.

- Reduce greenhouse gas emissions by 50% of 2015 levels by 2030
- Upgrade electric infrastructure to accommodate 18 electric charging stations (90%)
- Second half of 2022 receive 6 electric battery powered coaches
- 2023 receive 12 additional electric battery powered coaches
- Order 10 additional electric battery powered coaches total of 30
- 24 ultra-low NOx propane ACCESS coaches by 2024
- Replace all ACCESS coaches with ultra-low NOx by 2030
- Install 2 induction style charging areas at new Silverdale Transit Center
- Explore the possibility of producing hydrogen for use in fuel cell coaches
- Develop an electric battery powered hydrofoil fast ferry
- 2023 Charleston base solar project potentially generating 75 kW

5. Stewardship: To continuously improve the quality, effectiveness, and efficiency of the transportation system.

- Install inductive charging systems at transit centers to maximize electric vehicle utilization
- Research Hydrogen vehicle technologies and systems ensure diversification of the fleet in case of a disaster

- Partner with private entities to research probability of an all-electric high speed foil passenger ferry
- Complete the design for a new heavy duty maintenance facility at North Base to ensure full system efficiency, electric vehicle mx and continuity of operations
- Complete preliminary engineering in partnership with WSDOT for a second ferry slip at the Southworth Ferry Terminal and/or a separate passenger only ferry dock to improve operational efficiency and capacity
- Complete study of a new or improved Port Orchard Transit Center to address growing demands due to population increases in the South Kitsap area
- Conduct a location and design study for a heavy-duty maintenance facility for ferry vessels to improve service reliability
- Coordinate with SR 305 project partners to build a park and ride at Day Road and Johnson Road along the SR 305 corridor
- Begin design on a heavy-duty maintenance facility to allow for service improvements



Concept of an all-electric high speed foil vessel under study

Section VII: Capital Planning

	2023			2024			2025		
	<u>Grant Funding</u>	<u>Local Funding</u>	<u>Total</u>	<u>Grant Funding</u>	<u>Local Funding</u>	<u>Total</u>	<u>Grant Funding</u>	<u>Local Funding</u>	<u>Total</u>
Vehicles	\$8,000,000	\$3,800,000	\$11,800,000	\$7,000,000	\$3,500,000	\$10,500,000	\$7,300,000	\$1,750,000	\$9,050,000
Passenger Ferry Vessels	\$7,000,000	\$2,250,000	\$9,250,000	\$10,000,000	\$2,060,000	\$12,060,000	\$5,500,000	\$1,250,000	\$6,750,000
Operations Bases	\$2,500,000	\$1,000,000	\$3,500,000	\$1,250,000	\$250,000	\$1,500,000	\$500,000	\$125,000	\$625,000
Passenger Ferry Terminals	\$6,678,000	\$8,500,000	\$15,178,000	\$3,800,000	\$1,000,000	\$4,800,000	\$2,500,000	\$550,000	\$3,050,000
Park & Ride/Transit Centers	\$9,200,000	\$7,000,000	\$16,200,000	\$7,100,000	\$13,000,000	\$20,100,000	\$6,000,000	\$1,200,000	\$7,200,000
Equipment and Systems - Ferry	\$475,000	\$100,000	\$575,000	\$550,000	\$150,000	\$700,000	\$475,000	\$100,000	\$575,000
Equipment and Systems - Bus	\$735,000	\$1,900,000	\$2,635,000	\$1,750,000	\$800,000	\$2,550,000	\$500,000	\$150,000	\$650,000
Total Capital Program	\$34,588,000	\$24,550,000	\$59,138,000	\$31,450,000	\$20,760,000	\$52,210,000	\$22,775,000	\$5,125,000	\$27,900,000
	2026			2027			2028		
	<u>Grant Funding</u>	<u>Local Funding</u>	<u>Total</u>	<u>Grant Funding</u>	<u>Local Funding</u>	<u>Total</u>	<u>Grant Funding</u>	<u>Local Funding</u>	<u>Total</u>
Vehicles	\$7,300,000	\$1,750,000	\$9,050,000	\$7,300,000	\$1,750,000	\$9,050,000	\$7,300,000	\$1,750,000	\$9,050,000
Passenger Ferry Vessels	\$265,000	\$5,200,000	\$5,465,000	\$265,000	\$15,125,000	\$15,390,000	\$265,000	\$5,200,000	\$5,465,000
Operations Bases	\$500,000	\$100,000	\$600,000	\$2,000,000	\$425,000	\$2,425,000	\$50,000,000	\$10,000,000	\$60,000,000
Passenger Ferry Terminals	\$30,000,000	\$6,000,000	\$36,000,000	\$6,000,000	\$1,250,000	\$7,250,000	\$5,000,000	\$1,000,000	\$6,000,000
Park & Ride/Transit Centers	\$1,250,000	\$350,000	\$1,600,000	\$875,000	\$250,000	\$1,125,000	\$1,250,000	\$350,000	\$1,600,000
Equipment and Systems - Ferry	\$475,000	\$100,000	\$575,000	\$475,000	\$100,000	\$575,000	\$475,000	\$100,000	\$575,000
Equipment and Systems - Bus	\$500,000	\$150,000	\$650,000	\$500,000	\$150,000	\$650,000	\$500,000	\$150,000	\$650,000
Total Capital Program	\$40,290,000	\$13,650,000	\$53,940,000	\$17,415,000	\$19,050,000	\$36,465,000	\$64,790,000	\$18,550,000	\$83,340,000
Kitsap Transit is awarded \$1,500,000 in Transportation Development Credits annually to use toward qualified project matching funds and has a Capital project reserve fund to help offset local contributions towards grant matches.									

Section VIII: Operating Data, 2021 – 2027

<u>Fixed Route Service</u>	<u>2021</u>	<u>2022</u>	<u>2023</u>	<u>2024</u>	<u>2025</u>	<u>2026</u>	<u>2027</u>
Revenue vehicle hours	100,596	125,000	129,000	130,000	130,000	130,000	130,000
Total vehicle hours	117,711	140,000	145,000	145,000	145,000	145,000	145,000
Revenue vehicle miles	1,684,818	1,900,000	2,100,000	2,100,000	2,100,000	2,100,000	2,100,000
Total vehicle miles	2,077,674	2,100,000	2,400,000	2,400,000	2,400,000	2,400,000	2,400,000
Passenger trips	729,038	1,000,000	2,200,000	2,400,000	2,500,000	2,650,000	2,650,000
<i>Fatalities</i>	<i>0</i>	Bio-Diesel fuel consumed (gal)			376,913		
<i>Reportable injuries</i>	<i>1</i>	Propane			0		
<i>Collisions</i>	<i>0</i>						
<u>Demand Response Service</u>	<u>2021</u>	<u>2022</u>	<u>2023</u>	<u>2024</u>	<u>2025</u>	<u>2026</u>	<u>2027</u>
Revenue vehicle hours	62,441	70,000	72,500	75,000	80,000	80,000	80,000
Total vehicle hours	73,367	80,000	82,000	85,000	90,000	90,000	90,000
Revenue vehicle miles	955,397	1,000,000	1,300,000	1,310,000	1,320,000	1,330,000	1,340,000
Total vehicle miles	1,098,869	1,100,000	1,625,000	1,655,000	1,700,000	1,710,000	1,720,000
Passenger trips	151,029	175,000	200,000	310,000	311,000	312,000	315,000
Fatalities	0	Bio-Diesel fuel consumed (gal)			20,161		
Reportable injuries	0	Gasoline consumed (gal)			1,476		
Collisions	0	Propane			186,291		
<u>Worker/Driver Service</u>	<u>2021</u>	<u>2022</u>	<u>2023</u>	<u>2024</u>	<u>2025</u>	<u>2026</u>	<u>2027</u>
Revenue vehicle hours	16,132	16,500	16,500	16,500	16,500	16,500	16,500
Total vehicle hours	20,325	21,000	21,000	21,000	21,000	21,000	21,000
Revenue vehicle miles	351,542	355,000	355,000	355,000	355,000	355,000	355,000
Total vehicle miles	385,352	388,000	388,000	388,000	388,000	388,000	388,000
Passenger trips	216,963	300,000	325,000	350,000	350,000	375,000	400,000
Fatalities	0	Bio-Diesel fuel consumed (gal)			92,736		
Reportable injuries	0						
Collisions	0						

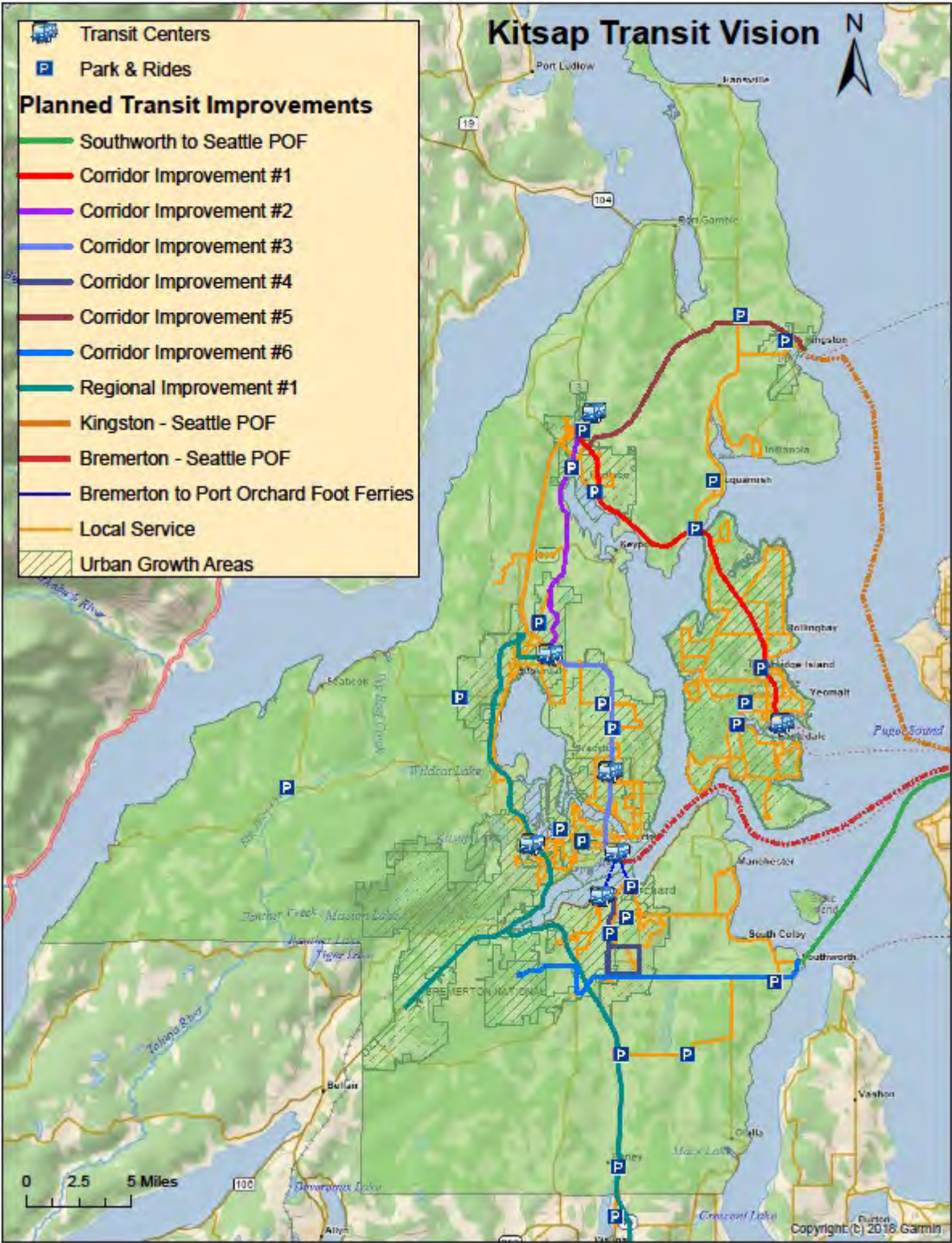
<u>Vanpool Service</u>	<u>2021</u>	<u>2022</u>	<u>2023</u>	<u>2024</u>	<u>2025</u>	<u>2026</u>	<u>2027</u>
Revenue vehicle hours	11,951	15,000	29,000	30,000	30,000	30,000	30,000
Total vehicle hours	11,951	15,000	29,000	30,000	30,000	30,000	30,000
Revenue vehicle miles	363,403	450,000	825,000	850,000	850,000	850,000	850,000
Total vehicle miles	363,403	450,000	825,000	850,000	850,000	850,000	850,000
Passenger trips	63,723	110,000	170,000	180,000	200,000	200,000	205,000
Fatalities	0	Diesel fuel consumed (gal)			0		
Reportable injuries	0	Gasoline consumed (gal)			23,856		
Collisions	0						
<u>Foot Ferry Service</u>	<u>2021</u>	<u>2022</u>	<u>2023</u>	<u>2024</u>	<u>2025</u>	<u>2026</u>	<u>2027</u>
Revenue vehicle hours	6,915	6,250	6,750	6,750	6,750	6,750	6,750
Total vehicle hours	6,973	6,300	6,800	6,800	6,800	6,800	6,800
Revenue vehicle miles	49,584	44,500	44,500	44,500	44,500	44,500	44,500
Total vehicle miles	50,173	45,000	45,000	45,000	45,000	45,000	45,000
Passenger trips	232,542	400,000	600,000	600,000	600,000	600,000	600,000
Fatalities	0	Diesel fuel consumed (gal)			736,452		
Reportable injuries	0	Gasoline consumed (gal)			0		
Collisions	0						
<u>Fast Ferry Service</u>	<u>2021</u>	<u>2022</u>	<u>2023</u>	<u>2024</u>	<u>2025</u>	<u>2026</u>	<u>2027</u>
Revenue vehicle hours	7,333	7,000	8,200	8,200	8,200	8,200	8,200
Total vehicle hours	7,791	7,000	8,200	8,200	8,200	8,200	8,200
Revenue vehicle miles	194,404	175,000	175,000	175,000	175,000	175,000	175,000
Total vehicle miles	205,148	175,000	175,000	175,000	175,000	175,000	175,000
Passenger trips	330,047	385,000	405,000	437,602	495,000	495,000	495,000
Fatalities	0	Diesel fuel consumed (gal)			1,001,540		
Reportable injuries	0						
Collisions	0						
<i>Safety related data (fatalities, injuries, and collisions) based on NTD definitions.</i>							

Section IX: Operating Revenues and Expenditures, 2021 – 2027

Transit Development Plan - Final Section IX - Operating Revenues and Expenditures (2021 - 2027) (Dollars in thousands)

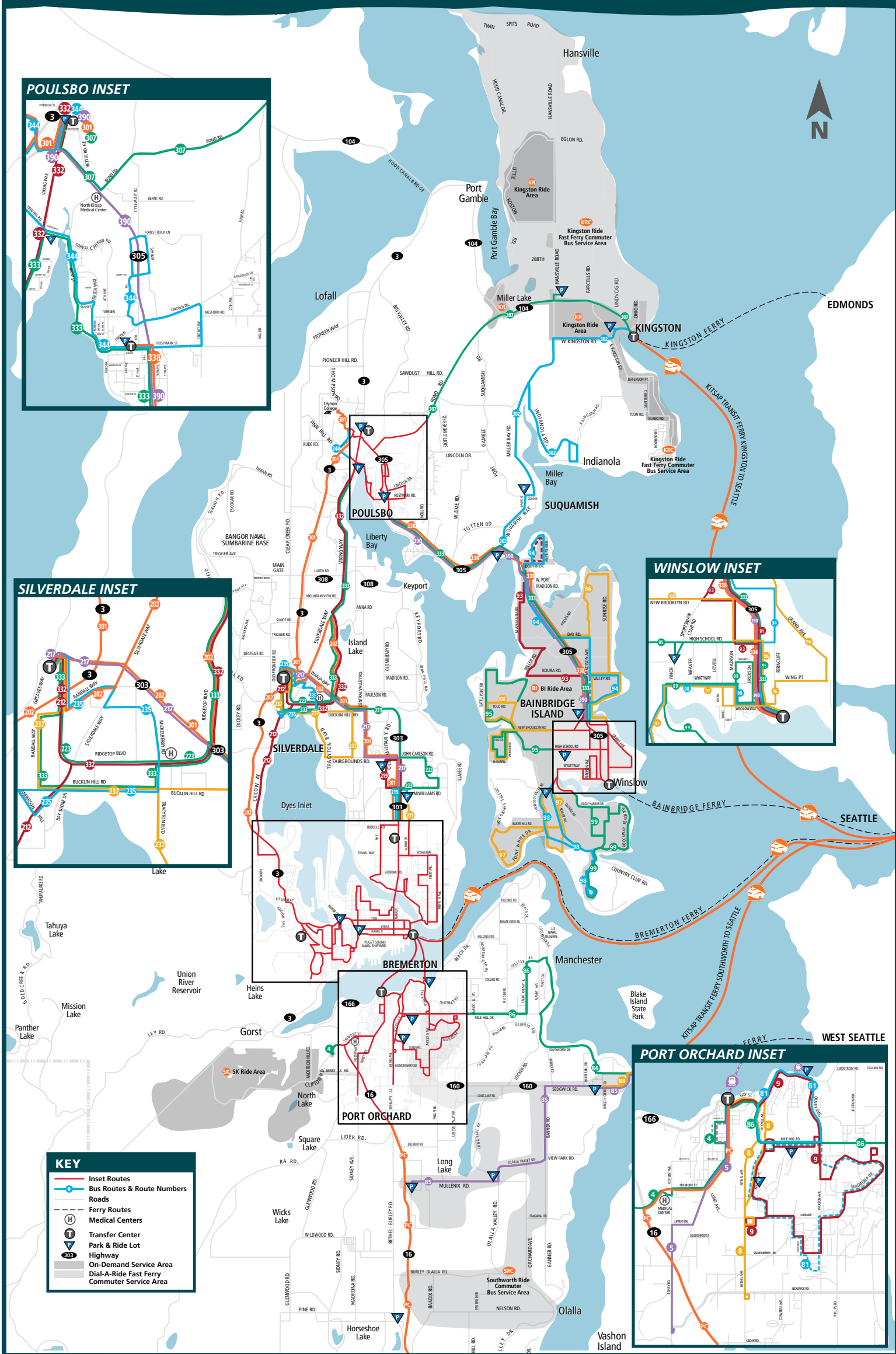
	Actual 2021	Budget 2022	Outlook				
	2023	2024	2025	2026	2027		
REVENUES							
FARES - ROUTED	1,008	1,132	1,912	1,931	1,950	1,970	1,990
FARES - WORKER DRIVER	873	878	1,048	1,059	1,069	1,080	1,091
FARES - VANPOOL	134	124	212	214	216	218	221
FARES - DEMAND RESPONSE	154	196	191	193	195	197	199
FARES - FERRY	2,089	2,256	2,642	2,774	2,913	3,059	3,212
PARKING REVENUE	150	132	132	133	135	136	137
ADVERTISING REVENUE	5	-	-	-	-	-	-
RENTAL INCOME	516	516	516	416	416	366	316
SALES TAX - NET	70,796	74,343	76,206	78,873	81,633	84,490	87,447
OPERATING GRANTS	44,992	497	2,244	5,180	5,180	5,180	5,180
INTEREST INCOME	244	360	523	690	688	759	819
OTHER INCOME (EXPENSE)	350	12	15	15	15	16	16
TOTAL REVENUES	121,311	80,446	85,641	91,478	94,410	97,471	100,627
OPERATING EXPENSES							
ROUTED SERVICE	22,780	28,135	29,893	31,388	32,957	34,605	36,335
WORKER DRIVER	4,001	4,528	4,685	4,919	5,165	5,423	5,694
VANPOOL	1,131	1,191	1,305	1,370	1,439	1,511	1,587
DEMAND RESPONSE	12,579	15,664	16,507	17,332	18,199	19,109	20,064
FERRY	13,581	16,405	19,253	20,216	21,228	22,290	23,406
TOTAL OPERATING EXPENSES	54,072	65,924	71,643	75,225	78,988	82,938	87,086
NET CASH AVAILABLE FROM OPERATIONS	67,239	14,522	13,998	16,253	15,422	14,533	13,541
BEGINNING UNRESTRICTED RESERVES	39,351	61,000	66,006	71,904	67,217	73,801	70,976
NET CASH AVAILABLE FROM OPS	67,239	14,522	16,934	16,253	15,422	14,533	13,541
PRINCIPAL AND INTEREST PAYMENT	(4,658)	(4,838)	(3,736)	(3,723)	(3,714)	(3,708)	(3,694)
CAPITAL EXPENDITURES, NET	(9,046)	(26,908)	(24,550)	(20,760)	(5,125)	(13,650)	(19,050)
RESERVES	(45,130)	17,224	17,251	3,544	-	-	-
OTHER, NET	2,704	-	-	-	-	-	-
ENDING UNRESTRICTED RESERVES	50,460	61,000	71,904	67,217	73,801	70,976	61,773

Section X: Transit System Vision Map



Appendix I: Routed System Map

Kitsap Transit System Map



KEY	
	Inset Routes
	Bus Routes & Route Numbers
	Roads
	Ferry Routes
	Medical Centers
	Transfer Center
	Park & Ride Lot
	Highway
	On-Demand Service Area
	Dial-A-Ride Fast Ferry
	Commuter Service Area

BREMERTON INSET



- 9 South Park
- 93 Manzanita
- 212 Bremerton/Silverdale West
- 219 Crossroads
- 332 Poulsbo/Silverdale

- 20 Navy Yard City
- 81 Annapolis Commuter
- 94 Agate Point
- 98 Fort Ward
- 215 McWilliams
- 229 Trenton
- 235 East Silverdale Old Town
- 302 Kingston/Suquamish Fast Ferry
- 344 Poulsbo Central

- 8 Bethel
- 24 Olympic College
- 96 Sunrise
- 97 Crystal Springs
- 106 Fletcher Bay
- 184 Harper Shuttle
- 221 Perry Avenue
- 237 West Silverdale/Fairgrounds

- 5 Sidney
- 85 Mullenix Express
- 217 Bremerton/Silverdale East
- 390 Poulsbo/Bainbridge
- Local Foot Ferries

- 4 Tremont
- 26 Bay Vista
- 86 Southworth Shuttle
- 95 Battle Point
- 99 Bill Point
- 222 Gateway Express
- 223 Kariotis
- 225 Sheridan Park
- 307 Kingston/North Viking Fast Ferry
- 333 Silverdale/Bainbridge

- 202 Central Kitsap Fast Ferry
- 301 North Kitsap Fast Ferry
- 338 Gateway/Bainbridge Express
- Fast Ferry Bremerton - Seattle
- Fast Ferry Kingston - Seattle
- Fast Ferry Southworth - Seattle
- PC Purdy Connection

- KRC Kingston Ride Fast Ferry Commuter
- SRC Southworth Ride Fast ferry Commuter
- KR Kingston Ride
- SK SK Ride
- BI BI Ride

This map is intended for general transit information only, and subject to change. Refer to individual schedules for specific information.

Appendix II: Equipment & Facilities Asset Inventory

Owned Facility Inventory Form

I hereby certify that all information reported in the inventories reflects true, accurate and complete information for the agency/organization listed and that project equipment purchased through a state or federal grant agreement is still being used in accordance with the terms and conditions of the grant agreement.

Facilities with a replacement value of \$25,000 or greater.
Refer to instructions for facility code.

Dennis Griffey
Signature and Title

02/15/22
Date

Agency/org: Kitsap Transit

Inventory year: 2021

No.	Facility code	Facility name	Condition (points)	Age (year)	Remaining useful life	Replacement cost (\$)	Comments
1	9	Annapolis Park & Ride	3	21	5	\$159,742.00	Park & Ride Only
2	6	Bainbridge Island Transfer Center (BITC)	3	21	20	\$213,199.00	
3	6	Bremerton Transportation Center (BTC)	3	21	20	\$1,732,016.00	
4	23	Charleston Base (CB)	3	20	20	\$4,461,462.00	
5	21	CB Fuel Building	3	20	20	\$1,414,889.00	
6	21	CB Wash Building	3	20	20	\$792,535.00	
7	11	Gateway	3	41	10	\$11,600,000.00	Purchased 06/10/20. *Age is approximate.
8	9	George's Corner Park & Ride	3	22	5	\$102,335.00	
9	10	Harborside	4	19	20	\$14,639,554.00	
10	9	Harper Park & Ride	3	12	20	\$194,723.00	
11	24	Hilltop	3	35		\$439,160.00	
12	23	North Base (NB)	5	6	40	\$771,350.00	
13	21	NB Wash Building A	5	6	40	\$1,324,929.00	
14	21	NB Fuel Building B	5	6	40	\$1,104,213.00	
15	6	North Viking Transfer Center	5	6	15	\$975,557.00	
16	24	Parker Lumber	2			SOLD	Sold as of 01/25/19.

17	23	South Base	2	13	20	\$863,378.00	
18	10	SB Training Building	3	13	20	\$226,109.00	
19	6	Wheaton Way Transfer Center (WWTC)	5	2	20	\$12,500,000.00	Grand Opening 11/25/19.
20	23	WWTC Drivers Building	5	1	20	\$683,900.00	Opened to drivers July 2020.
21	7	A-Float	3	20	20	\$8,190,000	
22	7	B-Float	3	21	20	\$9,690,000	
23	7	M-Float	5	20		\$1,960,000	
24	7	Annapolis Dock	5	6	30	\$12,523,944	
25	17	POIT (Port Orchard Intermodal Terminal, the PO Ferry Dock)	3	17	20	\$3,850,000	

Owned Equipment Inventory

Public Transportation Management System Owned Equipment Inventory

Agency: _____ Kitsap Transit

Support vehicle and equipment with a acquisition value greater than \$50,000
Refer to instructions for equipment code

I hereby certify that all information reported in the inventories reflects true, accurate and complete information for the agency/organization listed and that project equipment purchased through a state or federal grant agreement is still being used in accordance with the terms and conditions of the grant agreement.

Dennis Griffey
Signature and Title

02/15/22
Date

* Approximate replacement cost generated by calculating 2%/year for the age of asset.

No.	Code	Equipment Description	Condition (points)	Age (years)	Remaining Useful Life (years)	Approximate Replacement Cost*	Comments (If more than two lines, attach a separate comment page)
1	9	2018 Alignment Equipment	4	3	7	\$75,348	
2	9	70Q ROTARY INFLOOR LIFT	3	19	5	\$145,656	
3	4	Automatic Passenger Counters	4	6	5	\$452,760	
4	10	DIST SIGNS	2	27	3	\$212,268	
5	9	Oil Analysis System	3	7	5	\$59,976	
6	15	Onan Generator	3	21	5	\$105,000	
7	4	Opticom System Upgrade	3	7	5	\$271,656	
8	15	South Base Generator	4	7	5	\$62,370	
9	8	Radio Controller/Repeaters	3	18	10	\$119,595	
10	8	Add'l Cost Changing to Cencom	5	11	7	\$71,820	
11	3	Security System (MULLENIX P/R)	2	16	5	\$105,000	
12	4	Transit Fleet Software	4	6	7	\$106,260	
13	4	Access Data Terminals	3	5	5	\$138,348	
14	4	ORCA System Capital Improvements	1	4	5	\$172,515	
15	4	Automatic Passenger System	4	2	7	\$281,673	
16	8	Radio Upgrade System	5	2	10	\$1,082,550	

Appendix III: Fleet Inventory

12/30/2021 Vehicle-Vessel Listing

Vehicle #				Year	Mileage	License	VIN #
12	TRUCK	95CHEVDMPTRK	TRUCK K2PU	1995	183551	32211C	1GBJK34N4SE131576
14	TRUCK	98GMCFUELTRK	FUEL TANK TRUCK	1998	134952	32493C	1GDM7H1C7WJ519114
16	TRUCK	02INT4200	4200 VT365	2002	94057	57390C	1HTMLAFM43H577504
17	TRUCK	02INT4200	4200 VT365	2002	100540	57391C	1HTMLAFM63H577505
18	TRUCK	03INTFUELTRK	FUEL TRUCK	2003	195505	67028C	1HTMKAAR73H601445
19	TRUCK	03F350PUTRK	F350 TRUCK	2003	218947	62866C	1FTSF31PX3EC58442
20	TRUCK	04F350TRK	F350 TRUCK	2004	130036	70416C	1FTSF31P94ED13125
21	TRUCK	08F450SHPTRK	F450 SHOP TRUCK	2008	58722	86793C	1FDXF47R78EE58086
22	TRUCK	11FRDHPTRK	F450 SHOP TRUCK	2011	113043	95598C	1FD0X4GT3BEB33033
23	NONREV	12FRDESCAPE	ESCAPE NON HYBRID	2012	86357	98828C	1FMCU9C73CKB33600
24	TRUCK	13F150PUTRK	F-150	2013	134615	A4449C	1FTPF1CF6DKE57571
25	TRUCK	13F150PUTRK	F-150	2013	121634	A4450C	1FTPF1CF4DKE57570
26	TRUCK	15F250PUTRK	F-250P	2015	116761	A9350C	1FT7X2A6XFEB63940
27	TRUCK	15F250PUTRK	F-250P	2015	68195	A9351C	1FT7X2A61FEB63941
28	TRUCK	16F250PUTRK	F-250P SHOP	2016	27508	B4891C	1FTBF2B60GED00929
29	TRUCK	16F250PUTRK	F-250P SHOP	2016	31865	B4892C	1FTBF2B69GED00928
30	TRUCK	17FORDDUMP	DUMP	2017	37510	B9722C	1FDUF5HT3HED20645
31	TRUCK	19F350TRK	F350	2019	24463	C1885C	1FT8X3A62KEC43947
32	TRUCK	19SWEEPERTRK	ISU / SWEEPER TRUCK	2019	4762	C5174C	JALC4W167K7K01118
33	NONREV	20FRDTRANS-C		2020	12833	C902D	1FTRS4UG7LKB17695
34	TRUCK	22FORD		2021	303	D0493C	1FDUF5HT1NEC16358
150	NONREV	02TOYPRIUS	PRIUS	2002	149625	62758C	JT2BK12U820055476
151	NONREV	02TOYPRIUS	PRIUS	2002	77982	62755C	JT2BK12U020055617
152	NONREV	02TOYPRIUS	PRIUS	2002	105296	62757C	JT2BK12UX20055754
153	NONREV	02TOYPRIUS	PRIUS	2002	59138	62756C	JT2BK12UX20055883
160	SCOOT	2005HONDACVC	HONDA CIVIC HYBRID ELECT	2005	28432	74312C	JHMES966X5S004311
161	SCOOT	2005HONDACVC	HONDA CIVIC HYBRID ELECT	2005	25365	74313C	JHMES966X5S005491
162	SCOOT	2005HONDACVC	HONDA CIVIC HYBRID ELECT	2005	26873	74314C	JHMES96695S001786
163	SCOOT	2005HONDACVC	HONDA CIVIC HYBRID ELECT	2005	28034	74310C	JHMES96655S004314
164	SCOOT	2005HONDACVC	HONDA CIVIC HYBRID ELECT	2005	21763	74315C	JHMES96675S000992
165	SCOOT	2005HONDACVC	HONDA CIVIC HYBRID ELECT	2005	24325	74311C	JHMES96645S004062
166	SCOOT	2005HONDACVC	HONDA CIVIC HYBRID ELECT	2005	18778	74316C	JHMES96665S001986
167	SCOOT	2005HONDACVC	HONDA CIVIC HYBRID ELECT	2005	25249	74309C	JHMES96685S001665
170	NONREV	08FRDFOCUS	FOCUS	2008	31569	86730C	1FAHP35N98W230851
171	NONREV	08FRDFOCUS	FOCUS	2008	49056	86748C	1FAHP35N08W230852
172	NONREV	08FRDFOCUS	FOCUS	2008	46060	86749C	1FAHP35N28W230853
173	NONREV	08FRDFOCUS	FOCUS	2008	87618	86729C	1FAHP35N48W230854
180	NONREV	08FRDESCAPE	ESCAPE	2008	73360	86787C	1FMCU59H18KE43566
181	NONREV	08FRDESCAPE	ESCAPE	2008	62072	86788C	1FMCU59H38KE43567
182	NONREV	12FRDESCAPE	ESCAPE NON HYBRID	2012	30448	98831C	1FMCU9C76CKB33610
183	NONREV	12FRDESCAPE	ESCAPE NON HYBRID	2012	31096	98847C	1FMCU975CKB33615
184	NONREV	20FRDTRANSIT	TRANSIT	2020	11094	C0903D	1FMZK2C82LKA63989
185	NONREV	20FRDTRANSIT	TRANSIT	2020	16037	C2765D	1FMZK2C89LKA63990
186	NONREV	20FRDTRANSIT	TRANSIT	2020	16765	C2766D	1FMZK2C82LKA63992
187	NONREV	20FRDTRANSIT	TRANSIT	2020	5134	C2771D	1FMZK2C80LKA63991
515	E350	03E35020	ECONOLINE 350 20-	2003	277190	62898C	1FDSS34F73HB09284
519	E350	03E35020	ECONOLINE 350 20-	2003	149748	62899C	1FDSS34F43HB09288
531	E350	04E35020	ECONOLINE 350 20-	2004	167955	RS04821	1FDNE31P84HA55805
539	E350	04E35020	ECONOLINE 350 20-	2004	217740	RS04793	1FDNE31P74HA55813
541	E350	04E35020	ECONOLINE 350 20-	2004	67016	RS04810	1FDNE31P04HA55815
543	E350	04E35020	ECONOLINE 350 20-	2004	60987	RS04802	1FDNE31P44HA55817
546	E350	04E35020	ECONOLINE 350 20-	2004	88046	RS04800	1FDNE31P44HA55820
552	E350	04E35020	ECONOLINE 350 20-	2004	66890	RS04814	1FDNE31P54HA55826
556	E350	04E35020	ECONOLINE 350 20-	2004	76898	RS04807	1FDNE31P74HA55830
557	E350	04E35020	ECONOLINE 350 20-	2004	93662	RS04812	1FDNE31P94HA55831
560	E350	04E35020	ECONOLINE 350 20-	2004	180748	RS04784	1FDNE31P44HA55834
564	E350	04E35020	ECONOLINE 350 20-	2004	62449	RS04785	1FDSS31P74HA55838
579	E350	04E35020	CLUB WAGON	2004	142977	RS05107	1FDNE31P14HB40758
581	E350	04E35020	CLUB WAGON	2004	64704	RS05109	1FDNE31PX4HB40760
583	E350	06E35020	ECONOLINE 350 20-	2006	104862	RS05665	1FDNE31PX6HA09847
599	E350	06E350	VAN	2006	93519	RS06099	1FDNE31P86DA36942
610	E350	06E350	E31 CLUB WAGON	2006	90778	RS06579	1FDNE31P86DB39052
611	E350	06E350	E31 CLUB WAGON	2006	71909	RS06578	1FDNE31P46DB39050
613	E350	06E350	E31 CLUB WAGON	2006	38749	RS06581	1FDNE31P66DB39051
614	E350	06E350	E31 CLUB WAGON	2006	66926	RS06582	1FDNE31PX6DB39053

616	E350	06E350	E31 CLUB WAGON	2006 48025	RS06574	1FDNE31P86DB39049
618	E350	06E350	E31 CLUB WAGON	2006 52541	RS06577	1FDNE31P56DB39056
619	E350	06E350	E31 CLUB WAGON	2006 61108	RS06584	1FDNE31P76DB39057
621	E350	06E350	E350	2006 84212	RS06583	1FDNE31P96DB39058
622	E350	08E350	E31 CLUB WAGON	2008 61759	RS07439	1FDNE31L48DB40117
623	E350	08E350	E31 CLUB WAGON	2008 77718	RS07438	1FDNE31L68DB40118
624	E350	08E350	E31 CLUB WAGON	2008 97163	RS07436	1FDNE31L88DB40119
625	E350	08E350	E31 CLUB WAGON	2008 89666	RS07440	1FDNE31L48DB40120
626	E350	08E350	E31 CLUB WAGON	2008 126236	RS07437	1FDNE31L68DB40121
627	E350	08E350	E31 CLUB WAGON	2008 89215	RS07443	1FDNE31L88DB40122
628	E350	08E350	E31 CLUB WAGON	2008 79033	RS07442	1FDNE31LX8DB40123
629	E350	08E350	E31 CLUB WAGON	2008 77881	RS07445	1FDNE31L18DB40124
630	E350	08E350	E31 CLUB WAGON	2008 66453	RS07441	1FDNE31L38DB40125
730	GILLIG-PHNTM	2003GIL40FT	40- 730-749 PHANTOM	2003 513590	62868C	15GDD271531111814
731	GILLIG-PHNTM	2003GIL40FT	40- 730-749 PHANTOM	2003 475654	62870C	15GDD271731111815
732	GILLIG-PHNTM	2003GIL40FT	40- 730-749 PHANTOM	2003 524863	62871C	15GDD271931111816
733	GILLIG-PHNTM	2003GIL40FT	40- 730-749 PHANTOM	2003 528171	62872C	15GDD271031111817
734	GILLIG-PHNTM	2003GIL40FT	40- 730-749 PHANTOM	2003 533416	62873C	15GDD271231111818
735	GILLIG-PHNTM	2003GIL40FT	40- 730-749 PHANTOM	2003 497149	62874C	15GDD271531111819
736	GILLIG-PHNTM	2003GIL40FT	40- 730-749 PHANTOM	2003 507983	62876C	15GDD271031111820
737	GILLIG-PHNTM	2003GIL40FT	40- 730-749 PHANTOM	2003 566211	62877C	15GDD271231111821
739	GILLIG-PHNTM	2003GIL40FT	40- 730-749 PHANTOM	2003 457708	62879C	15GDD271631111823
740	GILLIG-PHNTM	2003GIL40FT	40- 730-749 PHANTOM	2003 456743	62883C	15GDD271831111824
741	GILLIG-PHNTM	2003GIL40FT	40- 730-749 PHANTOM	2003 486743	62885C	15GDD271531111825
742	GILLIG-PHNTM	2003GIL40FT	40- 730-749 PHANTOM	2003 456756	62886C	15GDD271131111826
743	GILLIG-PHNTM	2003GIL40FT	40- 730-749 PHANTOM	2003 456201	62887C	15GDD271331111827
744	GILLIG-PHNTM	2003GIL40FT	40- 730-749 PHANTOM	2003 565763	62888C	15GDD271531111828
745	GILLIG-PHNTM	2003GIL40FT	40- 730-749 PHANTOM	2003 428285	62884C	15GDD271731111829
746	GILLIG-PHNTM	2003GIL40FT	40- 730-749 PHANTOM	2003 487328	62894C	15GDD271331111830
747	GILLIG-PHNTM	2003GIL40FT	40- 730-749 PHANTOM	2003 465222	62892C	15GDD271531111831
750	GILLIG-LF	2003GIL35FT	35- 750&751 LOW FLOOR	2003 506913	62891C	15GGD271233073522
751	GILLIG-LF	2003GIL35FT	35- 750&751 LOW FLOOR	2003 545789	62893C	15GGD271431073523
752	GILLIG-LF	2004GIL35FT	35- 752-761 LOW FLOOR	2004 574257	70433C	15GGB291041074091
753	GILLIG-LF	2004GIL35FT	35- 752-761 LOW FLOOR	2004 631227	70434C	15GGB291241074092
754	GILLIG-LF	2004GIL35FT	35- 752-761 LOW FLOOR	2004 650124	70435C	15GGB291441074093
755	GILLIG-LF	2004GIL35FT	35- 752-761 LOW FLOOR	2004 627850	70436C	15GGB291641074094
756	GILLIG-LF	2004GIL35FT	35- 752-761 LOW FLOOR	2004 579382	70437C	15GGB291841074095
757	GILLIG-LF	2004GIL35FT	35- 752-761 LOW FLOOR	2004 630070	70438C	15GGB291X41074096
758	GILLIG-LF	2004GIL35FT	35- 752-761 LOW FLOOR	2004 637224	70439C	15GGB291141074097
759	GILLIG-LF	2004GIL35FT	35- 752-761 LOW FLOOR	2004 552881	70440C	15GGB291341074098
760	GILLIG-LF	2004GIL35FT	35- 752-761 LOW FLOOR	2004 576189	70441C	15GGB291541074099
761	GILLIG-LF	2004GIL35FT	35- 752-761 LOW FLOOR	2004 686906	70442C	15GGB291841074100
762	GILLIG-LF	2005GIL35FT	35- 762-766 LOW FLOOR	2005 576061	74334C	15GGB291851074101
763	GILLIG-LF	2005GIL35FT	35- 762-766 LOW FLOOR	2005 532602	74335C	15GGB291X51074102
764	GILLIG-LF	2005GIL35FT	35- 762-766 LOW FLOOR	2005 621115	74336C	15GGB291151074103
765	GILLIG-LF	2005GIL35FT	35- 762-766 LOW FLOOR	2005 560941	74337C	15GGB291351074104
766	GILLIG-LF	2005GIL35FT	35- 762-766 LOW FLOOR	2005 572039	74338C	15GGB291551074105
770	GILLIG-LF	2004GIL40FT	40- 770-774 LOW FLOOR	2004 717588	70428C	15GGB291641074106
771	GILLIG-LF	2004GIL40FT	40- 770-774 LOW FLOOR	2004 604914	70429C	15GGB291841074107
772	GILLIG-LF	2004GIL40FT	40- 770-774 LOW FLOOR	2004 622030	70430C	15GGB291X41074108
773	GILLIG-LF	2004GIL40FT	40- 770-774 LOW FLOOR	2004 501941	70431C	15GGD291141074109
774	GILLIG-LF	2004GIL40FT	40- 770-774 LOW FLOOR	2004 461777	70443C	15GGB291841074110
775	GILLIG-LF	2005GIL40FT	40- 775-779 LOW FLOOR	2005 548998	74339C	15GGD291851074111
776	GILLIG-LF	2005GIL40FT	40- 775-779 LOW FLOOR	2005 663981	74340C	15GGD291X51074112
777	GILLIG-LF	2005GIL40FT	40- 775-779 LOW FLOOR	2005 503162	74341C	15GGD291151074113
778	GILLIG-LF	2005GIL40FT	40- 775-779 LOW FLOOR	2005 491780	74342C	15GGD291351074114
779	GILLIG-LF	2005GIL40FT	40- 775-779 LOW FLOOR	2005 552272	74343C	15GGD291551074115
780	GILLIG-LF	2016GIL29FT	29'LOWFLOOR	2016 222870	B4866C	15GGE2710G1093092
781	GILLIG-LF	2016GIL29FT	29'LOWFLOOR	2016 218469	B4867C	15GGE2712G1093093
782	GILLIG-LF	2016GIL29FT	29'LOWFLOOR	2016 200555	B4868C	15GGE2714G1093094
783	GILLIG-LF	2016GIL29FT	29'LOWFLOOR	2016 204208	B4871C	15GGE2716G1093095
784	GILLIG-LF	2016GIL29FT	29'LOWFLOOR	2016 200118	B4872C	15GGE2718G1093096
785	GILLIG-LF	2016GIL29FT	29'LOWFLOOR	2016 210930	B4863C	15GGE2710G1092962
786	GILLIG-LF	2016GIL29FT	29'LOWFLOOR	2016 207099	B4864C	15GGE271261092963
787	GILLIG-LF	2016GIL29FT	29'LOWFLOOR	2016 216395	B4865C	15GGE271461092964
788	GILLIG-LF	2017GIL29FT	LOW FLOOR	2017 142258	B8743C	15GGE2711H3093088
789	GILLIG-LF	2017GIL29FT	LOW FLOOR	2017 166873	B8744C	15GGE2713H3093089
790	STARTRANS	17SENATOR26	E-450P	2017 96899	C0256C	1FDFE4FS4HDC57514
791	STARTRANS	17SENATOR26	E-450P	2017 86251	C0255C	1FDFE4FS9HDC57511

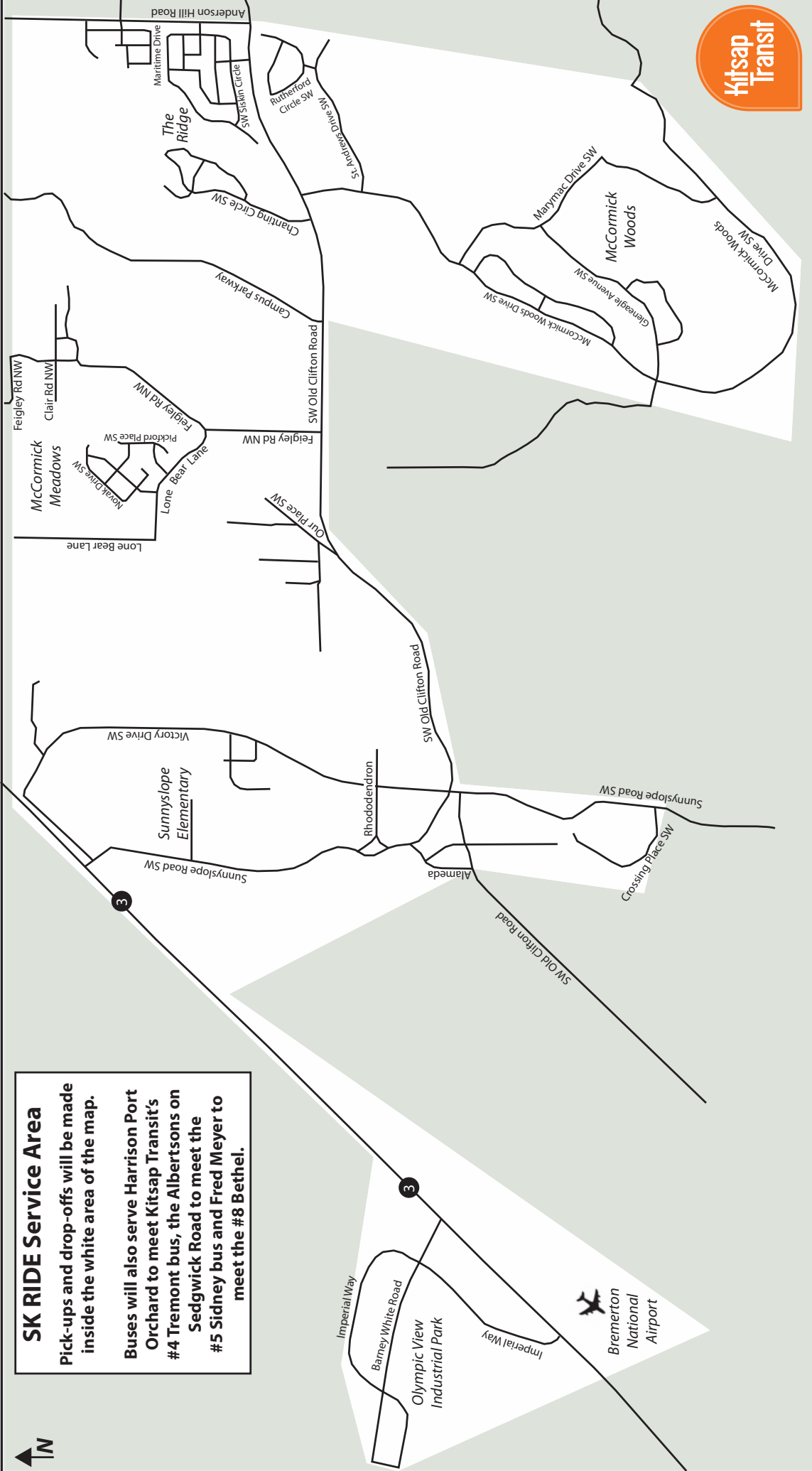
792	GILLIG-LF	2018GIL29FT	29' LOW FLOOR	2018	139725	C1805C	15GGE2712J3093106
793	GILLIG-LF	2018GIL29FT	29' LOW FLOOR	2018	150269	C1804C	15GGE2712J3093107
794	GILLIG-LF	2018GIL29FT	29' LOW FLOOR	2018	153758	C1806C	15GGE2712J3093108
795	GILLIG-LF	2018GIL29FT	29' LOW FLOOR	2018	143870	C1807C	15GGE2718J3093109
800	ELECTRIC	PROTERRA	40' CATALYST	2018	37155	C1811C	1M9TH16J8JL816223
1016	STARTRANS	09SENATOR24	SENATOR 24-	2009	245742	91631C	1FDFE45P49DA39507
1100	GOSHEN	CHEV2013	G-4500	2013	166516	A2728C	1GB6G5BL4D1127044
1101	GOSHEN	CHEV2013	G-4500	2013	187569	A2729C	1GB6G5BL2D1127346
1102	GOSHEN	CHEV2013	G-4500	2013	179507	A2730C	1GB6G5BL7D1125253
1103	GOSHEN	CHEV2013	G-4500	2013	193411	A3880C	1GB6G5BL7D1125351
1104	GOSHEN	CHEV2013	G-4500	2013	190708	A3881C	1GB6G5BLXD1125599
1105	GOSHEN	CHEV2013	G-4500	2013	187237	A3882C	1GB6G5BL2D1126228
1106	GOSHEN	CHEV2013	G-4500	2013	188986	A3883C	1GB6G5BLXD1126462
1107	GOSHEN	CHEV2013	G-4500	2013	187132	A3884C	1GB6G5BL7D1126743
1108	GOSHEN	CHEV2013	G-4500	2013	167272	A3885C	1GB6G5BL8D1126344
1109	GOSHEN	CHEV2013	G-4500	2013	163601	A3886C	1GB6G5BL9D1127389
1110	GOSHEN	CHEV2013	G-4500	2013	186482	A3887C	1GB6G5BL4D1130622
1111	STARTRANS	15SENATOR22	E-450P / SENATOR	2015	147971	C1890C	1FDFE4FS0FDA14487
1112	STARTRANS	15SENATOR22	E-450P / SENATOR	2015	140856	B0530C	1FDFE4FS2FDA14488
1113	STARTRANS	15SENATOR22	E-450P / SENATOR	2015	160661	A9359C	1FDFE4FS4FDA14489
1114	STARTRANS	15SENATOR22	E-450P / SENATOR	2015	152216	B0529C	1FDFE4FS0FDA14490
1115	STARTRANS	15SENATOR22	E-450P / SENATOR	2015	152758	B0528C	1FDFE4FS2FDA14491
1116	STARTRANS	16SENATOR22	E-450P	2016	140170	A5490C	1FDFE4FS9GDC03950
1117	STARTRANS	16SENATOR22	E-450P	2016	146699	B4417C	1FDFE4FS4GDC24317
1118	STARTRANS	16SENATOR22	E-450P	2016	145484	B4418C	1FDFE4FS8GDC24319
1119	STARTRANS	16SENATOR22	E-450P	2016	136464	B4419C	1FDFE4FS4GDC24320
1120	STARTRANS	16SENATOR22	E-450P	2016	145124	B4858C	1FDFE4FS5GDC26125
1121	STARTRANS	16SENATOR22	E-450P	2016	147121	B4857C	1FDFE4FS7GDC26126
1122	STARTRANS	16SENATOR22	E-450P	2016	145027	B4856C	1FDFE4FS9GDC26127
1123	STARTRANS	16SENATOR22	E-450P	2016	131510	A5491C	1FDFE4FS3GDC26124
1124	STARTRANS	17SENATOR22	E-450P	2017	114128	B7814C	1FDFE4FS1HDC01515
1125	STARTRANS	17SENATOR22	E-450P	2017	115729	B7815C	1FDFE4FS3HDC01516
1126	STARTRANS	17SENATOR22	E-450P	2017	114386	B7816C	1FDFE4FS6HDC01543
1127	STARTRANS	17SENATOR22	E-450P	2017	103730	B7817C	1FDFE4FS1HDC01546
1128	STARTRANS	17SENATOR22	E-450P	2017	123280	B7818C	1FDFE4FS3HDC01547
1129	STARTRANS	17SENATOR22	E-450P	2017	126547	B7819C	1FDFE4FS5HDC01548
1130	STARTRANS	17SENATOR22	E-450P	2017	116686	B6661C	1FDFE4FS3HDC01550
1131	STARTRANS	17SENATOR22	E-450P	2017	126649	B6662C	1FDFE4FS5HDC01551
1132	STARTRANS	17SENATOR22	E-450P	2017	116300	B6663C	1FDFE4FS9HDC01553
1133	STARTRANS	17SENATOR22	E-450P	2017	116250	B6664C	1FDFE4FS0HDC01554
1134	STARTRANS	17CANDIDATE	CANDIDATE II	2017	61518	C0254C	1FDES6PV0HKB26780
1135	STARTRANS	17CANDIDATE	CANDIDATE II	2017	85479	C0253C	1FDES6PV2HKB26781
1136	STARTRANS	17CANDIDATE	CANDIDATE II	2017	86054	C0252C	1FDES6PV4HKB26782
1137	STARTRANS	17CANDIDATE	CANDIDATE II	2017	71688	C0251C	1FDES6PV5HKB28315
1138	STARTRANS	17CANDIDATE	CANDIDATE II	2017	74922	B9739C	1FDES6PV7HKB28316
1139	STARTRANS	19SENATOR22	E-450P	2019	69027	C5138C	1FDFE4FS0JDC3715
1140	STARTRANS	19SENATOR22	E-450P	2019	67132	C5126C	1FDFE4FS2JDC37316
1141	STARTRANS	19SENATOR22	E-450P	2019	56453	C5127C	1FDFE4FS4JDC37317
1142	STARTRANS	19SENATOR22	E-450P	2019	74025	C5137C	1FDFE4FS4JDC37320
1143	STARTRANS	19SENATOR22	E-450P	2019	70585	C5134C	1FDFE4FS5JDC37312
1144	STARTRANS	19SENATOR22	E-450P	2019	66660	C5135C	1FDFE4FS6JDC37318
1145	STARTRANS	19SENATOR22	E-450P	2019	77273	C5128C	1FDFE4FS6JDC37321
1146	STARTRANS	19SENATOR22	E-450P	2019	75447	C5178C	1FDFE4FS7JDC37313
1147	STARTRANS	19SENATOR22	E-450P	2019	73564	C5129C	1FDFE4FS7KDC12414
1148	STARTRANS	19SENATOR22	E-450P	2019	67261	C5130C	1FDFE4FS8JDC37319
1149	STARTRANS	19SENATOR22	E-450P	2019	73915	C5131C	1FDFE4FS9JDC37314
1150	STARTRANS	19SENATOR22	E-450P	2019	70896	C5139C	1FDFE4FS9KDC12415
1151	STARTRANS	20SENATOR22	E-450P	2020	21802	C2768D	1FDFE4FS9KDC69214
1152	STARTRANS	20SENATOR22	E-450P	2020	20159	C2770D	1FDFE4FS8KDC71780
1153	STARTRANS	20SENATOR22	E-450P	2020	20919	D0601C	1FDFE4FS2KDC71791
1154	STARTRANS	20SENATOR22	E-450P	2020	18564	C2769D	1FDFE4FS4KDC71792
1155	STARTRANS	20SENATOR22	E-450P	2020	20749	D0600C	1FDFE4FS8KDC71794
1156	STARTRANS	20SENATOR22	E-450P	2020	20190	D0602C	1FDFE4FS8KDC69205
1157	STARTRANS	20SENATOR25	E-450P	2020	5487	C0939D	1FDFE4FSXKDC71795
1158	STARTRANS	20SENATOR25	E-450P	2020	7025	C0940D	1FDFE4FS3KDC71797
1159	STARTRANS	20SENATOR25	E-450P	2020	6627	C0941D	1FDFE4FSXKDC71800
1160	STARTRANS	20SENATOR25	E-450P	2020	11268	D0619C	1FDFE4FS1KDC71801
1161	STARTRANS	20SENATOR25	E-450P	2020	7598	D0620C	1FDFE4FS3KDC71802
1162	STARTRANS	20SENATOR25	E-450P	2020	4150	D0621C	1FDFE4FS5KDC71803

2000	VANPOOL	10TOYSIENNA	SIENNA	2010	104789	RSO8104	5TDKK4CC0AS302676
2001	VANPOOL	10TOYSIENNA	SIENNA	2010	85118	RSO8105	5TDKK4CC5AS303127
2002	VANPOOL	10TOYSIENNA	SIENNA	2010	91973	RSO8106	5TDKK4CC3AS303174
2003	VANPOOL	10TOYSIENNA	SIENNA	2010	109347	RSO8107	5TDKK4CC6AS303282
2004	VANPOOL	10TOYSIENNA	SIENNA	2010	106486	RSO8108	5TDKK4CC3AS303353
2005	VANPOOL	10TOYSIENNA	SIENNA	2010	113311	RSO8109	5TDKK4CC5AS303404
2006	VANPOOL	10TOYSIENNA	SIENNA	2010	90890	RSO8099	5TDKK4CC3AS302820
2007	VANPOOL	10TOYSIENNA	SIENNA	2010	87440	RSO8098	5TDKK4CCXAS302992
2008	VANPOOL	10TOYSIENNA	SIENNA	2010	85423	RSO8100	5TDKK4CC7AS303114
2009	VANPOOL	10TOYSIENNA	SIENNA	2010	73831	RSO8101	5TDKK4CC8AS303316
2010	VANPOOL	10TOYSIENNA	SIENNA	2010	85933	RSO8102	5TDKK4CC6AS303573
2011	VANPOOL	10TOYSIENNA	SIENNA	2010	122821	RSO8103	5TDKK4CC2AS303697
2012	VANPOOL	10TOYSIENNA	SIENNA	2010	140757	RSO8097	5TDKK4CC0AS303522
2013	VANPOOL	10TOYSIENNA	SIENNA	2010	183964	RSO8096	5TDKK4CC9AS302983
2014	VANPOOL	10TOYSIENNA	SIENNA	2010	116647	RSO8095	5TDKK4CC9AS303535
2015	VANPOOL	10TOYSIENNA	SIENNA	2010	117636	RSO8094	5TDKK4CC6AS303671
2016	VANPOOL	10TOYSIENNA	SIENNA	2010	101025	RSO8093	5TDKK4CC1AS303772
2017	VANPOOL	10TOYSIENNA	SIENNA	2010	105430	RSO8110	5TDKK4CC7AS303811
2018	VANPOOL	10TOYSIENNA	SIENNA	2010	88799	RSO8140	5TDKK4CC7AS304053
2019	VANPOOL	10TOYSIENNA	SIENNA	2010	115283	RSO8139	5TDKK4CC5AS304231
2020	VANPOOL	10TOYSIENNA	SIENNA	2010	90164	RSO8138	5TDKK4CCXAS304242
2021	VANPOOL	10TOYSIENNA	SIENNA	2010	134278	RSO8137	5TDKK4CC9AS304250
2022	VANPOOL	10TOYSIENNA	SIENNA	2010	70599	RSO8136	5TDKK4CC4AS304270
2023	VANPOOL	10TOYSIENNA	SIENNA	2010	116109	RSO8135	5TDKK4CC0AS304279
2024	VANPOOL	10TOYSIENNA	SIENNA	2010	73725	RSO8141	5TDKK4CC1AS301410
2025	VANPOOL	10TOYSIENNA	SIENNA	2010	109742	RSO8142	5TDKK4CC8AS301372
2026	VANPOOL	10TOYSIENNA	SIENNA	2010	107959	RSO8143	5TDKK4CC0AS301558
2027	VANPOOL	10TOYSIENNA	SIENNA	2010	80669	RSO8144	5TDKK4CC9AS301722
2028	VANPOOL	10TOYSIENNA	SIENNA	2010	67922	RSO8145	5TDKK4CC2AS304185
2029	VANPOOL	10TOYSIENNA	SIENNA	2010	58540	RSO8146	5TDKK4CC7AS301363
2030	VANPOOL	10TOYSIENNA	SIENNA	2010	90644	RS14398	5TDKK4CC2AS301934
2031	VANPOOL	10TOYSIENNA	SIENNA	2010	97442	RSO8130	5TDKK4CC6AS302200
2032	VANPOOL	10TOYSIENNA	SIENNA	2010	104976	RSO8131	5TDKK4CC8AS301419
2033	VANPOOL	10TOYSIENNA	SIENNA	2010	90738	RSO8132	5TDKK4CCXAS302460
2034	VANPOOL	10TOYSIENNA	SIENNA	2010	100462	RSO8133	5TDKK4CC5AS301622
2035	VANPOOL	10TOYSIENNA	SIENNA	2010	110541	RSO8134	5TDKK4CC2AS301707
2036	VANPOOL	10TOYSIENNA	SIENNA	2010	121129	RSO8149	5TDKK4CCXAS301440
2037	VANPOOL	10TOYSIENNA	SIENNA	2010	84337	RSO8150	5TDKK4CC2AS302470
2038	VANPOOL	10TOYSIENNA	SIENNA	2010	122058	RSO8151	5TDKK4CC5AS302706
2039	VANPOOL	10TOYSIENNA	SIENNA	2010	107585	RSO8152	5TDKK4CC7AS302626
2040	VANPOOL	10TOYSIENNA	SIENNA	2010	81152	RSO8153	5TDKK4CC5AS301989
2041	VANPOOL	10TOYSIENNA	SIENNA	2010	97346	RSO8154	5TDKK4CC6AS301998
2042	VANPOOL	10TOYSIENNA	SIENNA	2010	106486	RSO8155	5TDKK4CC8AS301971
2044	VANPOOL	10TOYSIENNA	SIENNA	2010	116864	RSO8157	5TDKK4CC3AS302686
2045	VANPOOL	10TOYSIENNA	SIENNA	2010	154439	RSO8158	5TDKK4CC8AS302747
2046	VANPOOL	17TOYSIENNA	SIENNA	2017	39896	RS12496	5TDZZ3DC7HS854916
2047	VANPOOL	17TOYSIENNA	SIENNA	2017	17472	RS12495	5TDZZ3DC7HS851501
2048	VANPOOL	17TOYSIENNA	SIENNA	2017	24434	RS12494	5TDZZ3DC7HS855175
2049	VANPOOL	15DODGE	GRAND CARAVAN	2015	36192	RS12653	2CRDGBG9FR660471
2050	VANPOOL	18TOYSIENNA	SIENNA	2018	16722	RS13193	5TDZZ3DC1JS960476
2051	VANPOOL	18TOYSIENNA	SIENNA	2018	17057	RS13194	5TDZZ3DC0JS960596
2052	VANPOOL	18TOYSIENNA	SIENNA	2018	23096	RS13195	5TDZZ3DC9JS961536
2053	VANPOOL	18TOYSIENNA	SIENNA	2018	29507	RS13196	5TDZZ3DC0JS961621
2054	VANPOOL	18TOYSIENNA	SIENNA	2018	17055	RS13197	5TDZZ3DC4JS961962
2055	VANPOOL	18TOYSIENNA	SIENNA	2018	13900	RS13198	5TDZZDC0JS961232
2056	VANPOOL	18TOYSIENNA	SIENNA	2018	48948	RS13199	5TDZZ3DC7JS961194
2057	VANPOOL	18TOYSIENNA	SIENNA	2018	13811	RS13200	5TDZZ3DC7JS962202
2058	VANPOOL	18TOYSIENNA	SIENNA	2018	5205	RS13201	5TDZZ3DC7JS962782
2059	VANPOOL	18TOYSIENNA	SIENNA	2018	5806	RS13202	5TDZZ3DC1JS962325
2060	VANPOOL	18TOYSIENNA	SIENNA	2018	7863	RS13203	5TDZZ3DC5JS962666
2100	E350	09E350STRCH	ECONOLINE 350 STRETCH	2009	91389	RSO8165	1FDSS31L59DA86680
2101	E350	09E350STRCH	ECONOLINE 350 STRETCH	2009	90532	RSO8166	1FDSS31L09DA86683
2102	E350	09E350STRCH	ECONOLINE 350 STRETCH	2009	131157	RSO8164	1FDSS31L99DA86679
2103	E350	09E350STRCH	ECONOLINE 350 STRETCH	2009	97858	RSO8163	1FDSS31L79DA86681
2104	E350	09E350STRCH	ECONOLINE 350 STRETCH	2009	139951	RSO8167	1FDSS31LX9DA86688
2105	E350	09E350STRCH	ECONOLINE 350 STRETCH	2009	114156	RSO8173	1FDSS31L59DA86677
2106	E350	09E350STRCH	ECONOLINE 350 STRETCH	2009	168875	RSO8176	1FDSS31L89DA86687
2107	E350	09E350STRCH	ECONOLINE 350 STRETCH	2009	99242	RSO8180	1FDSS31L69DA86686
2108	E350	09E350STRCH	ECONOLINE 350 STRETCH	2009	71996	RSO8177	1FDSS31L89DA86690

2109	E350	09E350STRCH	ECONOLINE 350 STRETCH	2009 23814	RSO8175	1FDSS31629DA86684
2110	E350	09E350STRCH	ECONOLINE 350 STRETCH	2009 99710	RSO8184	1FDSS31L79DA86678
2111	E350	09E350STRCH	ECONOLINE 350 STRETCH	2009 87296	RSO8183	1FDSS31L39DA86678
2112	E350	09E350STRCH	ECONOLINE 350 STRETCH	2009 171178	RSO8191	1FDSS31L39DA86693
2113	E350	09E350STRCH	ECONOLINE 350 STRETCH	2009 77475	RSO8188	1FDSS31659DA86694
2114	E350	09E350STRCH	ECONOLINE 350 STRETCH	2009 109495	RSO8189	1FDSS31L49DA86685
2116	E350	09E350STRCH	ECONOLINE 350 STRETCH	2009 73192	RSO8194	1FDSS31L19DA86692
2117	E350	09E350STRCH	ECONOLINE 350 STRETCH	2009 82662	RSO8193	1FDSS31L19DA86689
2119	E350	09E35018	ECONOLINE 350 18-	2009 165685	RSO8187	1FDNE31L39DA86665
2120	E350	09E35018	ECONOLINE 350 18-	2009 99784	RSO8185	1FDNE31L19DA86664
2122	E350	09E35018	ECONOLINE 350 18-	2009 90892	RSO8178	1FDNE31L99DA86668
2123	E350	09E35018	ECONOLINE 350 18-	2009 98578	RSO8179	1FDNE31L79DA86667
2124	E350	09E35018	ECONOLINE 350 18-	2009 101099	RSO8174	1FDNE31L69DA86675
2125	E350	09E35018	ECONOLINE 350 18-	2009 121145	RSO8169	1FDNE31L09DA86669
2126	E350	09E35018	ECONOLINE 350 18-	2009 69417	RSO8168	1FDNE31L09DA86672
2127	E350	09E35018	ECONOLINE 350 18-	2009 78471	RSO8171	1FDNE31L29DA86673
2128	E350	09E35018	ECONOLINE 350 18-	2009 98105	RSO8170	1FDNE31L59DA86666
2129	E350	09E35018	ECONOLINE 350 18-	2009 93527	RSO8161	1FDNE31L99DA86671
2130	E350	09E35018	ECONOLINE 350 18-	2009 90984	RSO8162	1FDNE31L49DA86674
2131	E350	13E35020	E350 / Raised Roof	2013 91741	RS10582	1FTDS3EL8DDB34849
2132	E350	13E35018	E350 / RAISED ROOF	2013 20014	RS10583	1FTDE3EL4DDB34662
2133	E350	13E35018	E350 / RAISED ROOF	2013 37797	RS10584	1FTDE3EL6DDB34663
2134	E350	13E35018	E350 / RAISED ROOF	2013 57791	RS10585	1FTDE3EL8DDB34664
2135	E350	13E35018	E350 / RAISED ROOF	2013 18933	RS10586	1FTDE3ELXDDB34665
2136	E350	13E35018	E350 / RAISED ROOF	2013 17367	RS10587	1FTDE3EL1DDB34666
2137	E350	13E35018	E350 / RAISED ROOF	2013 7285	RS10588	1FTDE3EL3DDB34667
2138	E350	13E35018	E350 / RAISED ROOF	2013 14009	RS10589	1FTDE3EL5DDB34668
2139	T350	TRANSIT VAN	TRANSIT / T-350	2016 48260	RS11713	1FBAX2CV1GKA54543
2140	T350	TRANSIT VAN	TRANSIT / T350	2016 66051	RS11714	1FBAX2CV3GKA54544
2141	T350	TRANSIT VAN	TRANSIT / T350	2016 67945	RS11715	1FBAX2CV5GKA54545
2142	T350	TRANSIT VAN	TRANSIT	2016 80375	RS11709	1FBAX2CV7GKA54546
2143	T350	TRANSIT VAN	TRANSIT	2016 36777	RS11710	1FBAX2CV9GKA54547
2144	T350	TRANSIT VAN	TRANSIT / T350	2016 22342	RS11711	1FBAX2CV0GKA54548
2145	T350	TRANSIT VAN	TRANSIT / T350	2016 31882	RS11712	1FBAX2CV2GKA54549
2146	CONNECT	16CONNECT-G	TRANSIT CONNECT / XLT	2016 26145	RS11793	NM0GE9F70G1280657
2147	CONNECT	16CONNECT-G	TRANSIT CONNECT / XLT	2016 39705	RS11794	NM0GE9F72G1280658
2148	CONNECT	16CONNECT-G	TRANSIT CONNECT XLT	2016 36639	RS11796	NM0GE9F75G1280654
2149	CONNECT	16CONNECT-G	TRANSIT CONNECT XLT	2016 19527	RS11797	NM0GE9F74G1280662
2150	CONNECT	16CONNECT-G	TRANSIT CONNECT XLT	2016 26291	B4873C	NM0GE9F71G1280666
3500	GILLIG-LF	2019GIL35FT	35' LOW FLOOR	2019 79466	C5175C	15GGB2717K3191848
3501	GILLIG-LF	2019GIL35FT	35' LOW FLOOR	2019 93639	C5189C	15GGB2719K3191849
3502	GILLIG-LF	2019GIL35FT	35' LOW FLOOR	2019 81978	C8352C	15GGB2715K3191850
3503	GILLIG-LF	2019GIL35FT	35' LOW FLOOR	2019 90212	C8353C	15GGB2717K3191851
3504	GILLIG-LF	2019GIL35FT	35' LOW FLOOR	2019 81816	C8354C	15GGB2719K3191852
3505	GILLIG-LF	2019GIL35FT	35' LOW FLOOR	2019 77430	C8355C	15GGB2710K3191853
3506	GILLIG-LF	2019GIL35FT	35' LOW FLOOR	2019 80989	C8356C	15GGB2712K3191854
3507	GILLIG-LF	2019GIL35FT	35' LOW FLOOR	2019 97912	C8357C	15GGB2714K3191855
3508	GILLIG-LF	2019GIL35FT	35' LOW FLOOR	2019 79023	C5176C	15GGB2716K3191856
3509	GILLIG-LF	2019GIL35FT	35' LOW FLOOR	2019 74395	C8376C	15GGB2719K3194881
3510	GILLIG-LF	2019GIL35FT	35' LOW FLOOR	2019 79798	C8377C	15GGB2710K3194882
3511	GILLIG-LF	2019GIL35FT	35' LOW FLOOR	2019 69377	C8378C	15GGB2712K3194883
3512	GILLIG-LF	2019GIL35FT	35' LOW FLOOR	2019 64721	C8379C	15GGB2714K3194884
3513	GILLIG-LF	2019GIL35FT	35' LOW FLOOR	2019 64302	C8380C	15GGB2716K3194885
3514	GILLIG-LF	2019GIL35FT	35' LOW FLOOR	2019 69998	C8381C	15GGB2718K3194886
3515	GILLIG-LF	2019GIL35FT	35' LOW FLOOR	2019 69967	C8382C	15GGB271XK3194887
4000	ELECTRIC	2020GILLF40E	40' LOWFLOOR	2020 17469	D0485C	15GGD2819M3192480
4001	GILLIG-LF	2020GIL40FT	40' LOW FLOOR	2020 47221	D0604C	15GGD2719L3195752
4002	GILLIG-LF	2020GIL40FT	40' LOW FLOOR	2020 37901	D0481C	15GGD2710L3195753
4003	GILLIG-LF	2020GIL40FT	40' LOW FLOOR	2020 46460	D0482C	15GGD2712L3195754
4004	GILLIG-LF	2020GIL40FT	40' LOW FLOOR	2020 46082	D0483C	15GGD2714L3195755
4005	GILLIG-LF	2020GIL40FT	40' LOW FLOOR	2020 45860	D0484C	15GGD2716L3195756
6000	MCI	1994-MCI	102 D3	1994 382219	97224C	1M8SDMTA5RP046289
6001	MCI	1994-MCI	102 D3	1994 186655	97222C	1M8SDMTAXRP046658
6002	MCI	1994-MCI	102 D3	1994 865860	97218C	1M8SDMTA4RP046669
6003	MCI	1994-MCI	102 D3	1994 94083	97220C	1M8SDMTA2RP046699
6004	MCI	1994-MCI	102 D3	1994 322000	97688C	1M8SDMTA5RP046731
6005	MCI	1994-MCI	102 D3	1994 862214	97225C	1M8SDMTA9RP046733
6006	MCI	1994-MCI	102 D3	1994 503840	97217C	1M8SDMTAXRP046756
6007	MCI	1994-MCI	102 D3	1994 167352	97221C	1M8SDMTA0RP046782

6008	MCI	1994-MCI	102 D3	1994 897877	97671C	1M8SDMTA1RP046788
6009	MCI	1995-MCI	102 D3	1995 616107	97236C	1M8SDMTA0SP047081
6010	MCI	1995-MCI	102 D3	1995 762747	97235C	1M8SDMTA2SP047115
6011	MCI	1995-MCI	102 D3	1995 945904	97234C	1M8SDMTA6SP047120
6012	MCI	1995-MCI	102 D3	1995 263611	97223C	1M8SDMTA9SP047127
6013	MCI	1995-MCI	102 D3	1995 144318	97219C	1M8SDMTA9SP047130
6014	MCI	1995-MCI	102 D3	1995 311744	97684C	1M8SDMTA6SP047134
6015	MCI	1995-MCI	102 D3	1995 443048	97672C	1M8SDMTA9SP047337
6016	MCI	1995-MCI	102 D3	1995 902639	97675C	1M8SDMTA8SP047748
6017	MCI	1995-MCI	102 D3	1995 850722	97681C	1M8SDMTA8SP047751
6018	MCI	1996-MCI	102 D3	1996 306110	97677C	1M8SDMTA0TP048183
6019	MCI	1996-MCI	102 D3	1996 851378	97680C	1M8SDMTA3TP048310
6020	MCI	1996-MCI	102 D3	1996 349181	97237C	1M8SDMTA9TP048702
6021	MCI	1996-MCI	102 D3	1996 804027	97687C	1M8SDMTA4TP048705
6022	MCI	1996-MCI	102 D3	1996 174328	97683C	1M8SDMTAXTP048708
6023	MCI	1996-MCI	102 D3 / Series 60 Engine	1996 867557	97685C	1M8SDMTA5TP048714
6024	MCI	1997-MCI	102 D3	1997 236186	97682C	1M8SDMTAXVP049764
6025	MCI	1997-MCI	102 D3	1997 256008	97676C	1M8SDMTA0VP049787
6026	MCI	1997-MCI	102 D3	1997 845303	97673C	1M8SDMTA2VP049810
6027	MCI	1997-MCI	102 D3	1997 229500	97674C	1M8SDMTA4VP049811
6028	MCI	1997-MCI	102 D3	1997 603610	A0485C	1M8SDMPA4VP049706
6029	MCI	1997-MCI	102 D3	1997 738391	A0487C	1M8SDMPA8VP049708
6030	MCI	1998-MCI	102 D3	1998 571796	A0482C	1M8SDMTA0WP050505
6031	MCI	1998-MCI	102 D3	1998 527059	98855C	1M8SDMTA2WP050506
6032	MCI	1999-MCI	102 D3	1999 484865	A0481C	1M8SDMTA9XP051590
6033	MCI	1999-MCI	102 D3	1999 624301	A0483C	1M8SDMTA1XP052331
6034	MCI	2001-MCI	102 D3	2001 389886	A0486C	1M8SDMPA41P053748
6035	MCI	2001-MCI	102 D3	2001 483214	A0484C	1M8SDMPA21P053750
6040	MCI	1999-MCI	102 D3	1999 632088	B0535C	1M8SDMTA4XP051996
6041	MCI	2002-MCI	D4000	2002 218596	B0534C	1M8SDMPA72P054409
6042	MCI	2002-MCI	D4000	2002 662689	B0536C	1M8SDMPA12P054406
6043	MCI	2001-MCI	D4000	2001 678366	B6635C	1M8SDMPAX1P054211
6044	MCI	2001-MCI	D4000	2001 739631	B6634C	1M8SDMPA11P054212
6045	MCI	2001-MCI	D4000	2001 732682	B6636C	1M8SDMPA51P054214
CARL2	FERRY	CARLISLEII	FERRY	1917		CARLISLE II 214872
FINEST	FERRY	FINEST	FERRY	1996		1044082
LADYSWIFT	FERRY	LADYSWIFT	FERRY	2019		1285241
PETE	FERRY	ADMIRAL PETE	FERRY	1994		1021190
RELIANCE	FERRY	RELIANCE	FERRY	2019		1285140
RP1	FERRY	RP1	FERRY	2012		1225365
WATERMAN	FERRY	WATERMAN	FERRY	2019		1282918
SOLANO	FERRY	SOLANO	FERRY	2004		1155022
ENETAI	FERRY	ENETAI	FERRY	2020		1298861
COMMANDER	FERRY	COMMANDER	FERRY	2021		1298862

Appendix IV: SK Ride Service Area Map



SK RIDE Service Area

Pick-ups and drop-offs will be made inside the white area of the map.

Buses will also serve Harrison Port Orchard to meet Kitsap Transit's #4 Tremont bus, the Albertsons on Sedgwick Road to meet the #5 Sidney bus and Fred Meyer to meet the #8 Bethel.

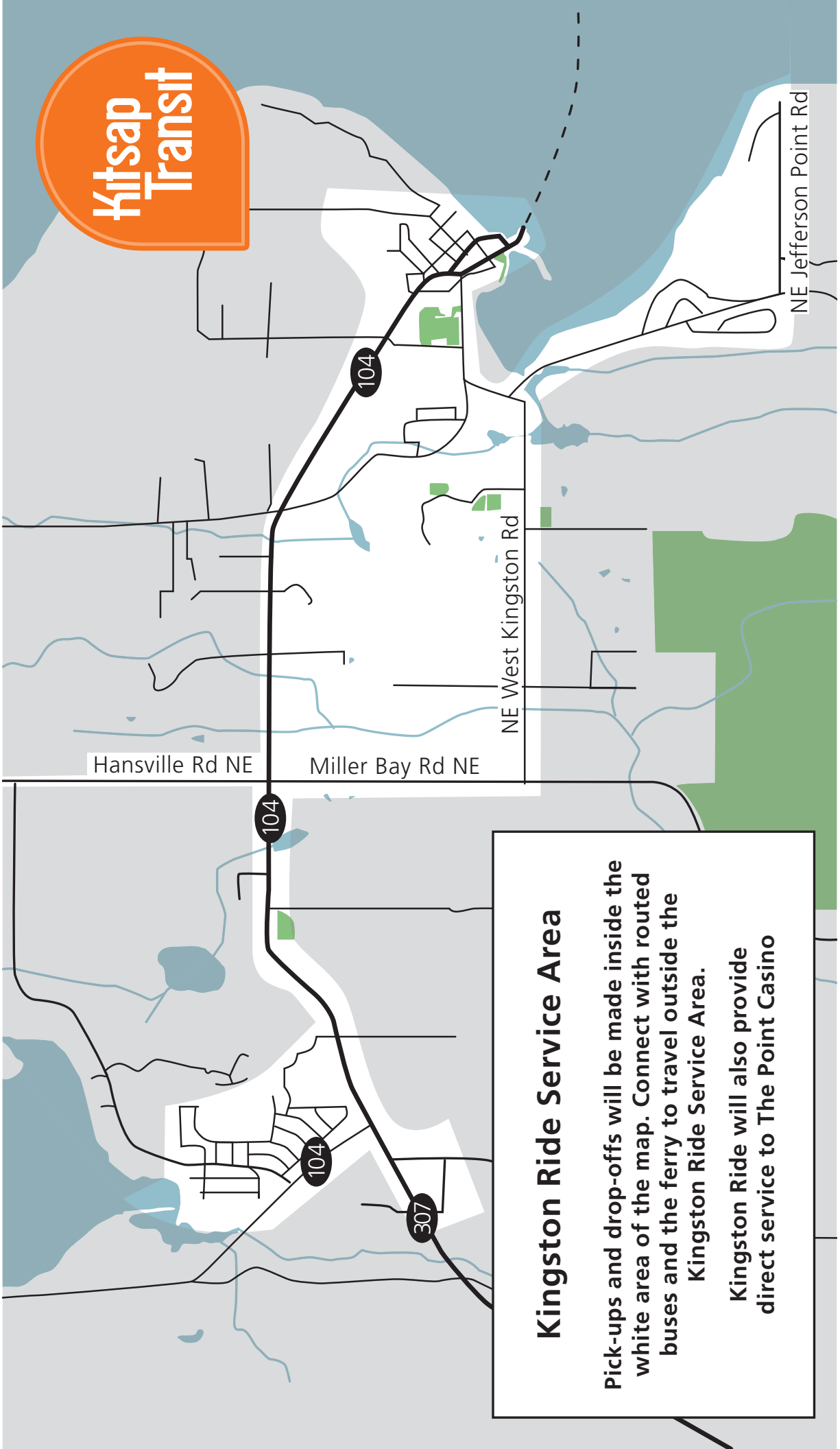
Pick-ups and drop-offs will be made inside the white area of the map.

Buses will also serve Harrison Port Orchard to meet Kitsap Transit's #4 Tremont bus, the Albertsons on Sedgwick Road to meet the #5 Sidney bus and Fred Meyer to meet the #8 Bethel.



Bremerton
National
Airport

Appendix V: Kingston Ride Service Area Map



Kingston Ride Service Area

Pick-ups and drop-offs will be made inside the white area of the map. Connect with routed buses and the ferry to travel outside the Kingston Ride Service Area.

Kingston Ride will also provide direct service to The Point Casino

Appendix VI: Kingston Fast Ferry Commuter Service Area Map

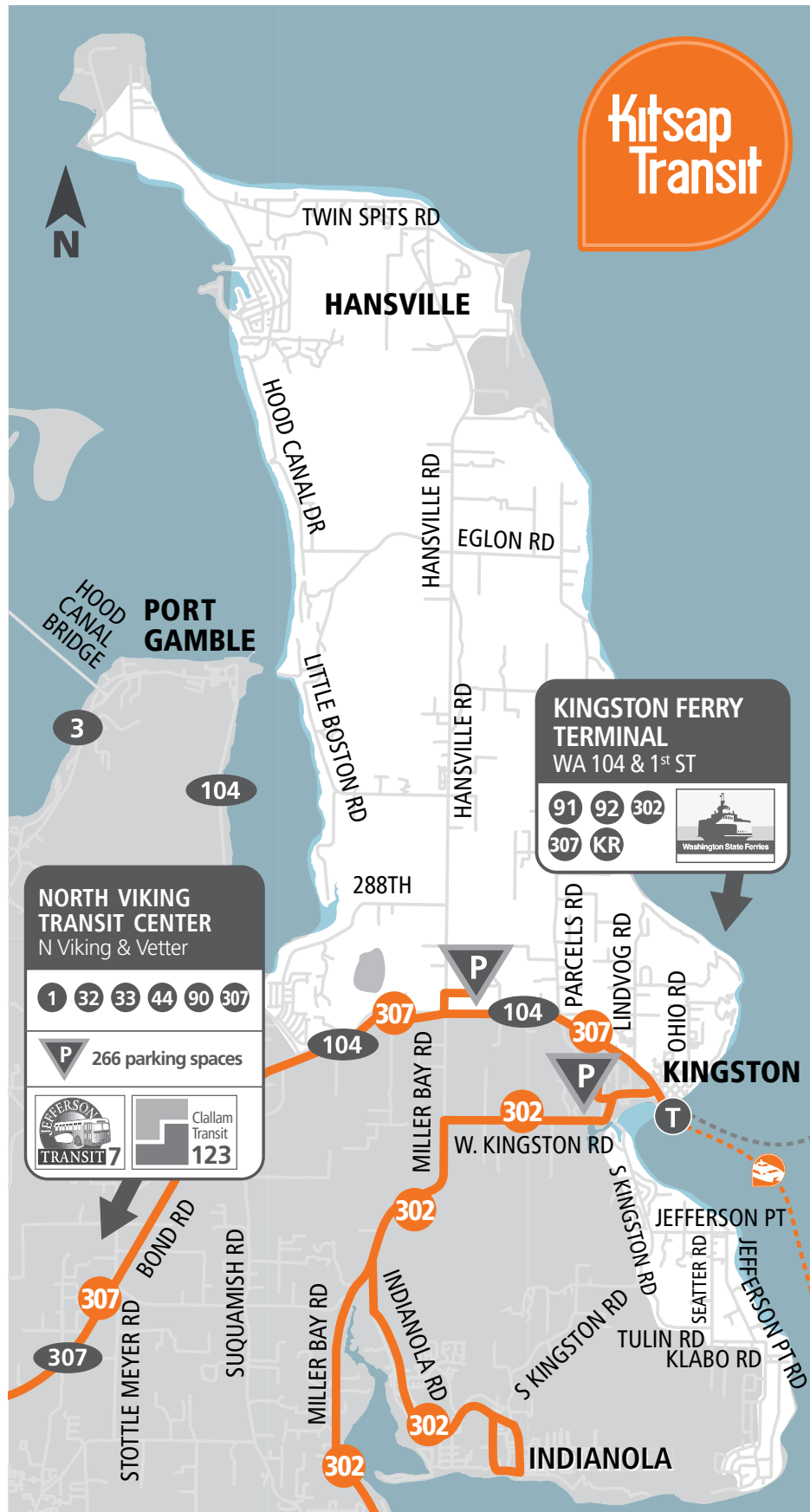
KEY



Fixed Routed Bus Service

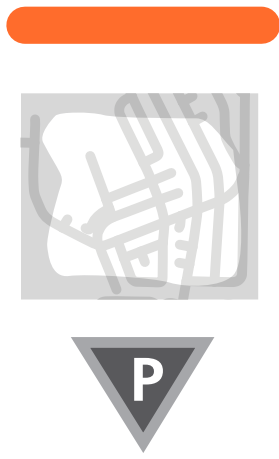
Kingston Ride Commuter
Bus Service Area

Park & Ride: George's Corner
and Bayside Community Church



Appendix VII: Southworth Fast Ferry Ride Service Area

KEY



Fixed Routed Bus Service

Southworth Dial-A-Ride
Commuter Bus Service Area

Park & Rides

