

2021 - 2026

TRANSIT DEVELOPMENT PLAN

Kitsap
Transit



Table of Contents

Contents

Glossary	3
Section I: Organization	3
Section II: Physical Plant	6
Section III: Service Characteristics	7
Section IV: Service Connections	11
Section V: Activities in 2020	13
Section VI: Proposed Action Strategies, 2021 – 2026	15
Section VII: Capital Planning	18
Section VIII: Operating Data, 2020 – 2026	19
Section IX: Operating Revenues and Expenditures, 2020 – 2026	21
Section X: Transit System Vision Map	22
Appendix I: Routed System Map	23
Appendix II: Equipment & Facilities Asset Inventory	24
Appendix III: Fleet Inventory	25
Appendix IV: SK Ride Service Area Map	26
Appendix V: Kingston Ride Service Area Map	27
Appendix VI: Kingston Fast Ferry Commuter Service Area Map	28
Appendix VII: Southworth Fast Ferry Ride Service Area	29

Kitsap Transit

60 Washington Avenue, Suite 200, Bremerton, WA 98337

Date of Public Hearing: July 20, 2021

Pursuant to RCW 35.58.2795

Glossary

ACCESS – Kitsap Transit’s ADA demand response bus service

ADA – Americans with Disabilities Act

APC – Automatic Passenger Counters

AVL – Automatic Vehicle Locator

BTC – Bremerton Transportation Center

CRA – Comprehensive Route Analysis

CTR – Commute Trip Reduction

DOD – Department of Defense

DSHS – Department of Social and Health Services

KT – Kitsap Transit

KTFF – Kitsap Transit Foot Ferry

LRTP – Long Range Transit Plan

NTD – National Transit Database

ORCA – One Regional Card for All regional fare payment card used on Puget Sound area transit systems and WSF

PSNS – Puget Sound Naval Shipyard

ROW – Right of Way

RRFP – Regional Reduced Fare Permit ORCA Card for qualified persons to ride for reduced cost at ½ the normal fare.

TAM – Transit Asset Management Plan

TIP – Transportation Incentive Program for Department of Navy employees to help reduce their daily contribution to traffic congestion and air pollution, as well as expand their commuting alternatives.

W / D – Kitsap Transit’s Worker/Driver program serving the PSNS and Bangor Naval Bases

WSF – Washington State Ferries

Section I: Organization

The Transit Development Plan (TDP) is reviewed annually and serves as a 5-year guide for Kitsap Transit. The TDP relates with the Long Range Transit Plan (LRTP) as an implementation and progress report reflecting on progress made towards the Kitsap Transit Vision. The Kitsap Transit Vision map is found in Section X on page 22.

Kitsap Transit (KT) is a public transportation benefit area authority, authorized in Chapter 36.57A RCW, and located in Kitsap County, Washington. Kitsap Transit began providing public transportation services in early 1983. KT's system map appears in Appendix I, showing the extent of the agency's service area. Beginning in 2011, as the result of a change in state law, membership on the KT Board of Commissioners increased from nine to ten and now includes one non-voting member who represents the agency's labor unions. The nine voting members of the

KT Board are the three Kitsap County Commissioners; the mayors (or an appointed Council Member) of the four incorporated cities in Kitsap County: Bainbridge Island, Bremerton, Port Orchard and Poulsbo; a member of the Bremerton City Council, appointed by the Bremerton City Council President; and one at-large member selected by the Board Chair from among interested elected officials from the four cities in the agency's service area. All board members serve for the duration of their elected term of office, with the exception of the Bremerton City Councilmember, who serves for a one-year term, and the at-large member, who serves for a two-year term and is selected at the last meeting in December or the first meeting in January every other year.

Kitsap Transit added a Marine Services Department as a result of the approval of Proposition 1 in November 2016. The Proposition authorized the collection of 3/10 of a cent sales tax to support passenger-only Fast Ferry services to Seattle from Bremerton, Kingston and Southworth. Increases in service hours, mileage and ridership forecasts can be attributed to the planned service improvements associated with new ferry services and the implementation of recommendations from the Long Range Transit Plan (LRTP) and the Comprehensive Route Analysis (CRA). New Fast Ferry service started in the summer of 2017 from Bremerton to Seattle; service began in late 2018 from Kingston to Seattle and began in March 2021 from Southworth.

Progress on Kitsap Transit's Board of Commissioners Goals for 2020

Bus Service Planning/Improvements:

- Complete design phase for Silverdale Transit Center in preparation for environmental assessment (Completed)
- Increase ridership by 3 percent (Postponed due to COVID-19)
- Reduce Average Claim frequency by 40 percent (40%) (85% completed)
- Fully implement Drive-Cam or similar system in Routed and ACCESS services (50%)
- Adoption of long-term base siting plan (85% delayed – COVID-19)

Passenger-only ferry projects:

- Implement ferry service between Southworth and Seattle (Began March 29, 2021)
- Alternatives analysis for additional KT vessel capacity - Seattle waterfront (10%)

Environmental Sustainability:

- Transition to paperless employee module for payroll information (10%)
- Reduce greenhouse gas emissions by 5 percent (5%) (100%)
- Adoption of plan for infrastructure options to implement electric bus fleet (100%)

Administration:

- Migrate to new, cloud-based platform of Financial Edge financial software system (75%)
- Develop and implement a marketing campaign for the Southworth Fast Ferry Launch equal to/greater than the one developed for the Kingston Fast Ferry Launch (80%)
- Refresh KT website (10%)
- Develop and distribute a monthly electronic newsletter to riders (0%)

2021 Organizational Chart for Kitsap Transit

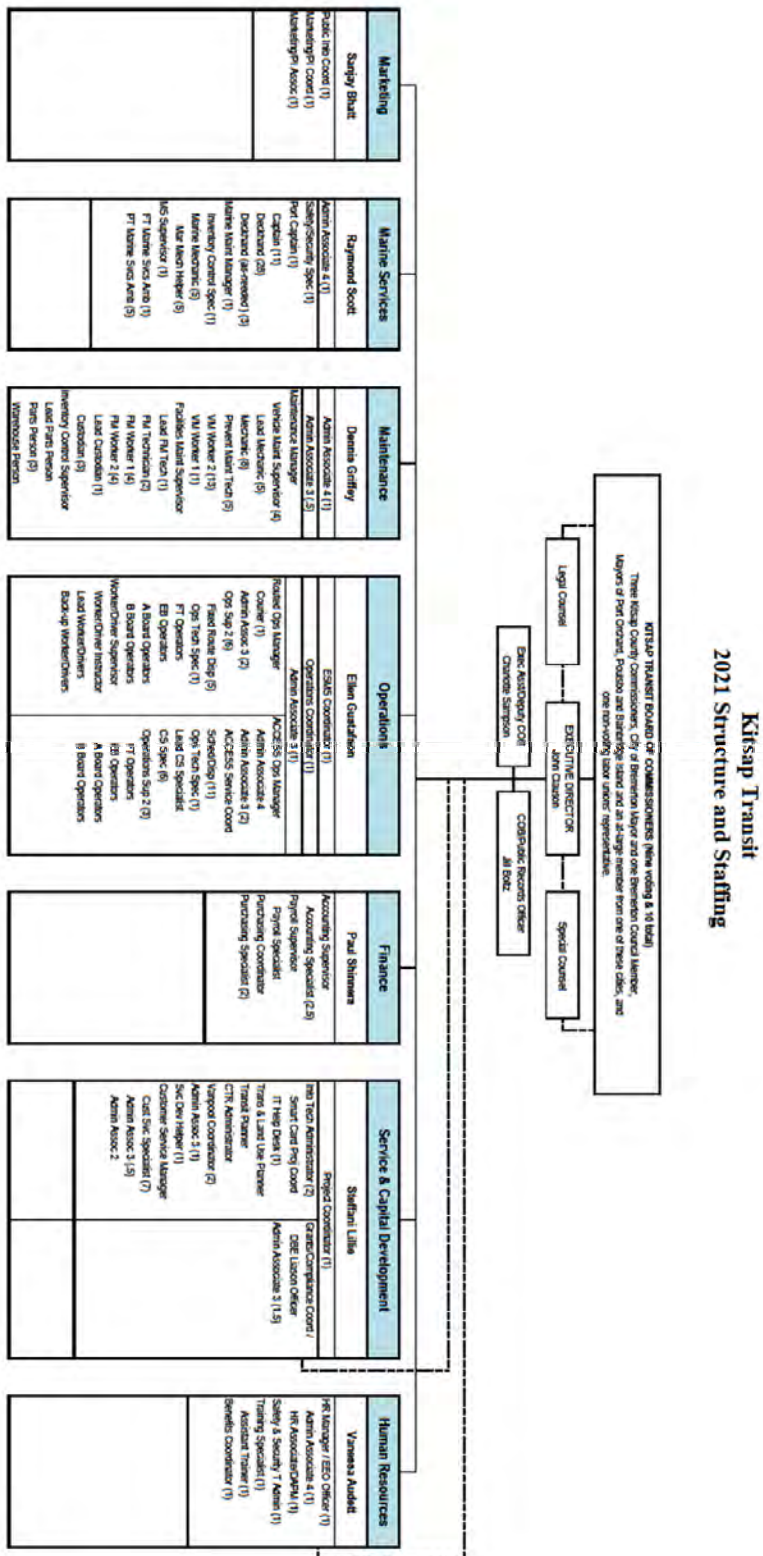


CHART Updated 10/29/2020

In 2020, Kitsap Transit employed full-time equivalent employees in the following departments:

3.0	Full-time equivalents in the Executive Division
233	Full-time equivalents in the Operations Division
	Of these:
128	were for Routed Service
84	were for ACCESS Service
21	were for Worker/Driver Service
55.5	Full-time equivalents in the Vehicle and Facilities Maintenance Division
24.0	Full-time equivalents in the Service Development Division
10.0	Full-time equivalents in the Finance Division
8.0	Full-time equivalents in the Human Resources Division
3.0	Full-time equivalents in the Capital Development Division
49.0	Full-time equivalents in the Marine Services Division
3.0	Full-time equivalents in the Marketing Division
388.5	Full-time equivalents as of 12/31/2020

Section II: Physical Plant

Kitsap Transit's administrative offices are located at 60 Washington Avenue, Suite 200 in Bremerton, WA, 98337. The agency's primary maintenance and operations facility is at 200 Charleston Boulevard, Bremerton, WA, 98312-4199. In addition, Kitsap Transit has a North Base at 21711 Vetter Road NW, Poulsbo, WA, 98370 and a South Base at 1430 Retsil Road, Port Orchard, WA, 98366. Routed and ACCESS operators report to the South Base and to the North Base for transit service in those areas.

Kitsap Transit also has a customer service office in the Bremerton Transportation Center (BTC), a major, multi-modal center serving buses, car ferries and passenger-only ferries, that opened in 2000 at 10 Washington Avenue in downtown Bremerton and a Call Center located in the Harborside Administration Bldg. A commuter-oriented, bicycle-storage facility, The Bike Barn at Bainbridge Island, opened in 1999 in the center of the Bainbridge Island Transfer Center. Renovations of The Bike Barn are completed (see cover page) and provide for an updated modern facility in line with current cycling standards.

The Appendices contain the completed forms for the state's public transportation management system for all Kitsap Transit's owned and contracted revenue vehicles and facilities.

Kitsap Transit owns 5 park and ride locations and leases 18 locations. The five owned locations are displayed below.

Name	Location	Stalls
Annapolis Ferry Terminal	1076 Beach Dr. E, Port Orchard	75
Georges Corner	27618 Hansville Rd NE, Kingston	225

Harper	10384 SE Sedgwick Rd, Port Orchard	462
North Viking Transit Center	21710 Vetter Rd NW, Poulsbo	265
Wheaton Way Transit Center	3915 Wheaton Way, Bremerton	162

Section III: Service Characteristics

In 2020, Kitsap Transit provided fixed route service, ADA-accessible demand response service (ACCESS), VanLink, Worker/Driver service, vanpool service, general public dial-a-ride service, on-demand and foot ferry service for parts of Kitsap County. Kitsap Transit's system map, in Appendix I, shows where Fixed Route service, On-Demand Ride services, and Kitsap Transit Foot Ferry (KTFF) service is offered.

The headways for routes that operated all day were usually one hour for local feeder routes and 30-45 minutes for trunk line routes. During commute hours, many of these all-day routes are also scheduled to meet Washington State Ferries (WSF) at the Bainbridge Island, Bremerton and Southworth terminals. Weekday service hours are from 4 a.m. to 10:00 p.m. This is later than prior years when all services were ended between 8:00 p.m. and 9:00 p.m.

In 2017, Kitsap Transit introduced the Bremerton to Seattle Fast Ferry service and two new routes connecting to that service in Bremerton. In late 2018, the Kingston Fast Ferry service began linking Kingston to Seattle with six weekday round trips and two new routes. Kitsap Transit also began to offer an on demand service linking areas around Kingston to the new ferry service.

On Saturdays, 18 fixed routes were operated on one-hour headways between 10 a.m. and 5:30 p.m. The Port Orchard to Bremerton Foot Ferry operates every 30 minutes on Saturdays. In 2019, Kitsap Transit implemented a 30 minute service frequency between Silverdale and Bremerton. In the summer of 2019 service frequency was increased on the Poulsbo to Bainbridge Island route to 30-40 minute frequency.

The service presented above is pre-COVID-19 Pandemic service in early 2020. Service has been reduced to meet declined passenger demand. Specific trips and services have been restored as requested throughout the pandemic. Existing service levels can be found at www.kitsaptransit.com

2018 marked the 75th year of the Worker/Driver program serving Puget Sound Naval Shipyard and Naval Base Kitsap. Kitsap Transit operates 34 Worker/Driver routes.

Fares:

Cash fares are \$2 on Routed buses and the Kitsap Transit Foot Ferry (KTFF), payable with cash or E-purse funds loaded on an ORCA card. Cash fares are \$1 on Routed buses and the KTFF with a Reduced Fare or Regional Reduced Fare-qualified ORCA card or a Regional Reduced Fare

Permit (RRFP) Card. Cash fares on *ACCESS* (demand response) buses and Dial-A-Ride services are \$2, and there is a \$1 surcharge for outlying area service in *ACCESS*. VanLink service is \$2.00 as well.

The Fast Ferry fares are below.

Fast Ferries	Eastbound	Westbound	Monthly Pass	
	Per trip fare		Fast Ferry only	Kitsap Transit Bus / Fast Ferry
Adult	\$2.00	\$10.00	\$168.00	\$196.00
Reduced Fare	\$1.00	\$5.00	\$84.00	\$98.00

Reduced Fare Eligibility

Riders who meet the following criteria are eligible for a Reduced Fare ORCA Card:

- Youth: Age 6-18 with proof of age.
- Low Income: Department of Social and Health Services (DSHS) low income, with proof of DSHS status and family size.

Riders who meet the following criteria are eligible for a Regional Reduced Fare ORCA Card:

- Medicare Card holder - A valid Medicare card issued by the Social Security Administration (Temporary)
- Senior – Age 65 or older with valid ID and completed Regional Reduced Fare Permit Application. First card is free. Replacement card is \$3.
- Disability – A completed Regional Reduced Fare Permit Application (first card is free, replacement card is \$3) and ONE of the following forms of verification:
 Verification of receipt of Social Security Disability Benefits or Supplemental Security Income Benefits due to disability (Temporary)
 Certification by the Veteran’s Administration at a 40% or greater disability level
 Valid Medicare card issued by the Social Security Administration (Temporary)
 Valid Regional ADA Paratransit Card
 Valid ADA Paratransit card from outside the region (Temporary)
 Proof of current enrollment in a Washington State Individual Educational Program (IEP) (Temporary)

Monthly Passes

Monthly Bus Pass - \$50

Valid on KT Routed service, *ACCESS* (eligible riders only) and KTFF.

Fast Ferry Pass - \$168 for Fast Ferry Only and \$196 for Bus and Fast Ferry.

Reduced Fare Monthly Bus Pass - \$25

Reduced Fast Ferry Pass - \$84 for Fast Ferry Only and \$98 for Bus and Fast Ferry.

Reduced fare is valid on KT Routed service, *ACCESS* (eligible riders only), Fast Ferry and KTFF. Riders must qualify for and have a Reduced Fare or Regional Reduced Fare-qualified ORCA card to purchase.

Regional Monthly Puget Pass

Valid for fare on Kitsap, Everett, Pierce, Metro, Community and Sound Transit(s) up to the trip value. When riding a service with a higher fare, the difference can be paid with cash or via ORCA E-purse. Many trip values are available. The most common for KT riders are:

- Puget Pass - \$2 each fare or \$72 a month or \$360 for eastbound and westbound with Fast Ferry service
- Reduced Fare Puget Pass - \$1 Fare or \$36 a month or \$180 for eastbound and westbound with Fast Ferry service

Riders who use WSF can add a monthly ferry pass to their ORCA card in combination with any of the passes above to pay their fare on all the systems they ride. There is also now a Regional all day pass that can be purchased and loaded onto an Orca card for \$8.00. Reduced fare for Senior/Disabled is \$4.00 and must be loaded onto an RRFP Orca card.

Employees of the DOD who commute to work by bus, vanpool, or ferry (walk-ons or passengers in a vanpool on WSF) are eligible to be reimbursed up to the current TIP subsidy amount, per month, for their actual commuting costs. The reimbursement allows free rides on Routed bus, Worker/Driver bus, vanpool (up to the current TIP subsidy amount per the TIP guidelines), KTFF or *ACCESS* service.

Free Riders

- Child - Up to four (4) children, age five (5) or under, accompanied by a fare-paying, responsible individual -- free of charge Any of the region's law enforcement personnel and fire fighters, in uniform or out of uniform, inside or outside of their jurisdiction.
- Public Safety Officer - Any of the region's law enforcement personnel and firefighters in or out of uniform, on or off duty and inside or outside of their jurisdiction -- free of charge with identification available to show driver or deckhand.
- Personal-care attendants traveling with eligible disabled customers.
- Bikes ride free on Kitsap Transit buses and the Kitsap Transit Foot Ferry, limited to space available.

Vanpools

Vanpool rates are determined by the size of the van, the number of miles traveled on the vanpool route and the number of riders on board. A full listing of vanpool fares and information can be viewed on our website at <http://www.kitsaptransit.com/vanpool>

Worker/Driver Buses

The one-way cash fare on Worker/Driver (W/D) buses is \$3.00, payable with cash or ORCA card E-purse. W/D riders can also pay their fare with a \$97 KT W/D monthly bus pass loaded on an ORCA card. Monthly passes are valid on W/D routes as well as on Routed, *ACCESS* (eligible riders only) and the KTFF. Most W/D fares are paid by the DOD.



Section IV: Service Connections



KT provides bus connection services at the following transportation facilities:

- Kitsap Transit's Fast Ferry arrival location in Seattle is a short distance from King County's Bus Routes 21, 37, 55, 56, 57, 113, 120, 121, 122, 123, 125 and the C Line Rapid Ride.
- Bremerton Transportation Center (BTC) with connections to WSF, KTFF, Mason Transit and other KT bus routes
- Bainbridge Island Ferry Terminal with connections to WSF, Clallam Transit and other KT bus routes
- Kingston Ferry Terminal with connections to WSF and other KT bus routes
- Southworth Ferry Terminal with connections to WSF
- Port Orchard Ferry Dock with connections to KTFF and other KT bus routes
- Annapolis Ferry dock with connections to KTFF
- West Bremerton Transfer Center with connections to other KT bus routes
- East Bremerton Transfer Center with connections to other KT bus routes
- Silverdale Transfer Center with connections to other KT bus routes
- North Viking Transit Center with connections to other KT bus routes, Clallam and Jefferson Transit
- Purdy park & ride lot in Pierce County with connections to Pierce Transit routes 100 and 102

In addition, KT provides open-door service to many of the middle and high schools in its service area, as well as the Bremerton and Poulsbo branches of Olympic College. All but one of the W/D buses and many vanpool vans serve Puget Sound Naval Shipyard (PSNS)/Naval Base Kitsap. Other vanpools serve Naval Base Bangor along with one W/D bus.

The **Bainbridge Island Ride (BIRide)** service started in June 2014. The service provides curb to curb dial-a-ride service to the general public. It operates Monday-Friday from 8:45 a.m. to 3:30 p.m. and Saturdays from 9:00 a.m. to 6:00 p.m. More information can be found at: <http://www.kitsaptransit.com/service/routed-buses/bi-ride>

South Kitsap Ride (SKRide) service commenced in 2015. It offers an on-demand style of bus service that utilizes both traditional call-in requests and an application that can be downloaded to a phone or computer to request rides in the McCormick Woods area of Port Orchard, parts of Bremerton and the County. The service offers connections to Routes 4 and 5. More information can be found at: <http://www.kitsaptransit.com/service/routed-buses/sk-ride>

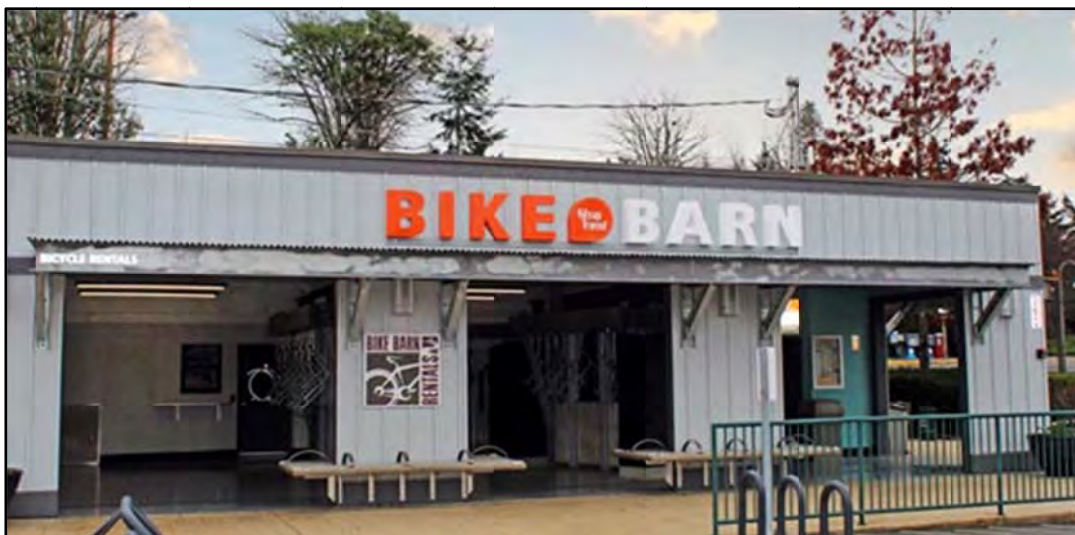
Kingston Ride services begin operation in June 2017. The service is based upon a similar model as the South Kitsap Ride bus service. The Kingston Ride will offer connections to WSF ferries at Kingston and Kitsap Transit routes 91 and 92 serving Bainbridge Island and Suquamish. More information can be found at: <http://www.kitsaptransit.com/service/routed-buses/kingston-ride>

Kingston Ride Fast Ferry Commuter service began operation in November 2018. The Fast Ferry Commuter Service is a shared ride shuttle to and from Kingston Ferry Terminal. More information can be found at: <http://kitsaptransit.com/service/routed-buses/kingston-ride-fast-ferry-commuter>

In 2021, Kitsap Transit started the **Southworth Ride Fast Ferry Commuter** service to connect with the new Passenger Only Ferry to Seattle which began service in March 2021. <https://www.kitsaptransit.com/service/routed-buses/southworth-ride-fast-ferry>

Nollwood Dial-A-Ride connects the Nollwood and Werner Road area with the West Bremerton Transfer Center. <https://www.kitsaptransit.com/service/routed-buses/nollwood-dial-a-ride>

Kitsap Transit operated Routed service and Worker/Driver service to 23 park & ride lots throughout Kitsap County in 2020.



Section V: Activities in 2020

In 2020, we addressed RCW 47.04.280 Transportation System Policy Goals through the following action strategies:

1. Preservation: To maintain, preserve, and extend the life and utility of prior investments in transportation systems and services.

- Completed reconstruction of the Annapolis Foot Ferry dock to achieve ADA standards
- Continued replacing our older fleets with 5 new clean diesel and 12 propane coaches
- Maintained fund 2 months operating reserve to improve Kitsap Transit's ability to respond to changes in sales tax revenue
- Continued to achieve high standards in preventative maintenance of our revenue vehicles with almost no missed trips
- Maintained \$6.0 million in capital reserve to support ongoing capital improvement projects

2. Safety: To provide for and improve the safety and security of transportation customers and the transportation system.

- Starting on Monday, March 23, 2020, Kitsap Transit stopped collecting fares on all of its services as part of its efforts to combat the spread of the novel coronavirus that causes COVID-19
- Fare collection resumed on Saturday, August 1, 2020
- Implemented UV light scrubbing technology onboard all revenue vehicles to improve passenger and employee safety
- Installed plexi-glass shielding for bus operators on fixed route services to protect against COVID-19
- In office plexi-glass was installed to protect employees and the public from covid
- Implemented extra cleaning staff to upgrade cleaning of vehicles, facilities and boats
- Trained COVID-19 monitors for each operating base to ensure safety of the environment
- Installed seat covers onboard revenue vehicles and vessels to ensure social distancing
- Supplied masks and hand sanitizer to the public and our employees to prevent the spread of COVID-19
- Enabled 45% of staff to telework enhancing the safety of the work centers
- Created a Respiratory Protection Program in response to COVID-19 and related cleaning and disinfection requirements for our operation
- Created a digital Employee Safety Reporting Program to assist in timely data collection and risk/hazard identification and mitigation
- Created and implemented a comprehensive COVID-19 Agency Response Plan
- Completed Cybersecurity risk baseline assessment in conjunction with KnowBe4, and trained all employees with internet access and KT email addresses

3. Mobility: To improve the predictable movement of goods and people throughout Washington State.

- Launched Single Ride and Day Pass Tickets with Transit Go for buses, local foot ferries and the fast ferries on October 12, 2020
- Completion of the Annapolis Foot Ferry Dock expansion to achieve ADA
- Implemented secondary supportive transportation services to allow for social distancing supporting the pandemic response
- Received one new vessel, one for the Southworth POF to Seattle route
- Continued operations during the COVID-19 pandemic at full geographic coverage with minor trip adjustments to meet demands

4. Environment: To enhance Washington's quality of life through transportation investments that promote energy conservation, enhance healthy communities and protect the environment.

- Completed the Electric Bus Infrastructure Study leading to the securement of 10 electric charging units to be installed at Charleston Base for up to 17 electric buses
- Researched, implemented and trained for all cleaning/sanitizer products used during the COVID-19 pandemic
- Continued ISO 14001 certification for Charleston and North base by passing annual surveillance audits with SAI Global
- Continued ISO 14001 certification for Marine Services fueling, storage and light maintenance at Bremerton Transportation Center by passing annual surveillance audits with SAI Global
- Developed a SPCC Plan for Marine Services at Bremerton Transportation Center and certified by a qualified engineering firm
- North base electric bus charging stations became operational to accommodate charging Proterra electric bus and future battery electric buses
- Installed UV Air Purification system on ferries and test buses
- Contracted with Gillig to build 40' battery electric bus and delivered in March 2021 – below:



5. Stewardship: To continuously improve the quality, effectiveness and efficiency of the transportation system.

- Held system routes without eliminating them during the COVID-19 pandemic
- Secured funding and completed design for six additional electric vehicle chargers at Charleston base to facilitate transition to a zero emission fleet
- Adjusted routed service to meet fluid demand changes during the COVID-19 pandemic

Section VI: Proposed Action Strategies, 2021 – 2026

The proposed changes in Section VI below are action strategies that reflect upon the following state Transportation Service Objectives.

1. Preservation: To maintain, preserve and extend the life and utility of prior investments in transportation systems and services.

- Restore Kitsap Transit service levels in all modes to pre-COVID-19 levels to meet community needs
- Complete heavy maintenance on Fast Ferry and local ferry vessels
- Complete upgrades to local docks to make them universal for all KT's vessels
- Continue to purchase electric coaches to replace diesel powered coaches, when able to be supported by the county's electrical infrastructure
- Electrical infrastructure growth project at Charleston Base and planning the North Base conversion
- Increase the operating reserve from 2 months to 3 months to further the continuity of service during an economic recession
- Maintain system state of repair using our TAM Plan and long range plans
- Rebuild Gillig Phantom coach

2. Safety: To provide for and improve the safety and security of transportation customers and the transportation system.

- Continue to receive no deficiencies during security inspections and audits
- Maintain current security standards and update information to be included in the Kitsap County Hazard Mitigation Plan
- Perform yearly emergency drills
- Order new buses equipped with on-board video
- Continue to apply for applicable safety and security grants
- Continue the New Operator Training Program and implement the updated curriculum from WSTIP/TATPCO which is based on Safety Management System principles
- Continue the Advanced Operator Training Program
- Continue to evaluate and update security technology as needed throughout the Kitsap Transit System
- Plan and conduct active shooter training in conjunction with Kitsap County Sheriff Department
- Conduct annual Emergency Operation Center drill in cooperation with Kitsap

- County Department of Emergency Management, to ensure readiness
- To receive no deficiencies during security inspections and audits
- To upgrade systems on buses so that analytics for driver performance can be captured and additional training can be accomplished
- Implement, benchmark, and manage AngelTrax driver improvement technology throughout the Routed and ACCESS vehicle fleet
- Implement the New Operator Training Program and implement the updated curriculum from WSTIP/TATPCO which is based on Safety Management System principles
- Ensuring the Entry-Level Driver Training Program complies with the US DOT and FMCSA regulations going into effect on 2/7/2022

3. Mobility: To improve the predictable movement of goods and people throughout Washington State.

- Complete the Silverdale Transit Center to improve service to the Silverdale Regional Center
- Conclude the ROW acquisition, design and construction of a new Park and Ride along the Highway 16 corridor to support reduced traffic in Gorst
- Move forward with the ROW acquisition, design and construction of a new Park and Ride along the Highway 104 and Bond Road to support reduced traffic in Kingston
- Complete park and ride ROW in Silverdale / west Bremerton
- Receive and put in service two new POF vessels
- Complete long range plan for the Seattle Waterfront Passenger Terminal
- Implement new technology for ride services passenger communications
- Implement Sunday service

4. Environment: To enhance Washington's quality of life through transportation investments that promote energy conservation, enhance healthy communities and protect the environment.

- Continue to be the leaders in in good marine mammal stewardship in the Puget Sound.
- To have no reportable oil spills or environmental impact issues
- Continue ISO 14001 certification for Charleston Base, North Base, and the Bremerton Fast Ferry Terminal
- Complete the construction and placement of supporting electrical infrastructure at the Charleston Base; expanding the electric bus fleet capacity
- Implement the use of the new Gillig 40' battery electric bus on service routes
- Implement fast ferry service from Southworth to Seattle as alternative to driving to Seattle
- Research hydrogen fuel cell buses and infrastructure needed as an alternative fuel option
- Research solar panels as an alternative energy source at Charleston base
- Continue with installation of UV Air Purification systems on bus fleet
- Upgrade bus wash system at Charleston base to reduce waste water runoff
- Conduct an Environmental Site Survey with a professional engineer at South base;

- Upgrade fluid tanks located at North Base; Inventory Control will be able to monitor tanks off site remotely
- Purchase electric and clean-diesel powered routed buses to replace aging diesel buses

5. Stewardship: To continuously improve the quality, effectiveness and efficiency of the transportation system.

- Install inductive charging systems at transit centers to maximize electric vehicle utilization
- Research Hydrogen vehicle technologies and systems ensure diversification of the fleet in case of a disaster
- Partner with private entities to research probability of an all-electric high speed foil passenger ferry
- Complete the design for a new heavy duty maintenance facility at North Base to ensure full system efficiency, electric vehicle mx and continuity of operations
- Complete preliminary engineering in partnership with WSDOT for a second ferry slip at the Southworth Ferry Terminal to improve operational efficiency and capacity
- Complete study of a new or improved Port Orchard Transit Center to address growing demands due to population increases in the South Kitsap area
- Introduce a new BI Ride App to facilitate and improve customer requests for service

Section VII: Capital Planning

	2022			2023			2024		
	<u>Grant Funding</u>	<u>Local Funding</u>	<u>Total</u>	<u>Grant Funding</u>	<u>Local Funding</u>	<u>Total</u>	<u>Grant Funding</u>	<u>Local Funding</u>	<u>Total</u>
Vehicles	\$5,200,000	\$3,800,000	\$9,000,000	\$5,693,622	\$1,052,964	\$6,746,586	\$7,491,701	\$1,872,926	\$9,364,627
Passenger Ferry Vessels	\$4,000,000	\$1,250,000	\$5,250,000	\$485,000	\$120,000	\$605,000	\$250,000	\$60,000	\$310,000
Operations Bases	\$2,300,000	\$2,000,000	\$4,300,000	\$2,450,000	\$1,600,000	\$4,050,000	\$1,250,000	\$250,000	\$1,500,000
Passenger Ferry Terminals	\$1,900,000	\$8,500,000	\$10,400,000	\$1,200,000	\$10,500,000	\$11,700,000	\$2,546,532	\$1,000,000	\$3,546,532
Park & Ride/Transit Centers	\$15,000,000	\$13,864,000	\$28,864,000	\$4,100,000	\$7,000,000	\$11,100,000	\$2,700,000	\$9,000,000	\$11,700,000
Equipment and Systems - Ferry	\$220,000	\$100,000	\$320,000	\$256,000	\$125,000	\$381,000	\$300,000	\$150,000	\$450,000
Equipment and Systems - Bus	\$420,000	\$500,000	\$920,000	\$300,000	\$500,000	\$800,000	\$300,000	\$150,000	\$450,000
Total Capital Program	\$29,040,000	\$30,014,000	\$59,054,000	\$14,484,622	\$20,897,964	\$35,382,586	\$14,838,233	\$12,482,926	\$27,321,159
	2025			2026			2027		
	<u>Grant Funding</u>	<u>Local Funding</u>	<u>Total</u>	<u>Grant Funding</u>	<u>Local Funding</u>	<u>Total</u>	<u>Grant Funding</u>	<u>Local Funding</u>	<u>Total</u>
Vehicles	\$6,254,353	\$1,458,589	\$7,712,942	\$7,300,000	\$1,750,000	\$9,050,000	\$8,000,000	\$2,100,000	\$10,100,000
Passenger Ferry Vessels	\$5,500,000	\$1,250,000	\$6,750,000	\$265,000	\$5,200,000	\$5,465,000	\$265,000	\$15,125,000	\$15,390,000
Operations Bases	\$1,250,000	\$250,000	\$1,500,000	\$0	\$500,000	\$500,000	\$2,000,000	\$425,000	\$2,425,000
Passenger Ferry Terminals	\$1,650,000	\$350,000	\$2,000,000	\$30,000,000	\$6,000,000	\$36,000,000	\$6,000,000	\$1,250,000	\$7,250,000
Park & Ride/Transit Centers	\$1,250,000	\$350,000	\$1,600,000	\$1,250,000	\$350,000	\$1,600,000	\$875,000	\$250,000	\$1,125,000
Equipment and Systems - Ferry	\$300,000	\$150,000	\$450,000	\$300,000	\$150,000	\$450,000	\$300,000	\$150,000	\$450,000
Equipment and Systems - Bus	\$300,000	\$150,000	\$450,000	\$300,000	\$150,000	\$450,000	\$300,000	\$150,000	\$450,000
Total Capital Program	\$16,504,353	\$3,958,589	\$20,462,942	\$39,415,000	\$14,100,000	\$53,515,000	\$17,740,000	\$19,450,000	\$37,190,000

Kitsap Transit is awarded \$1,500,000 in Transportation Development Credits annually to use toward qualified project matching funds and has a Capital project reserve fund to help offset local contributions towards grant matches.

Section VIII: Operating Data, 2020 – 2026

<u>Fixed Route Service</u>	<u>2020</u>	<u>2021</u>	<u>2022</u>	<u>2023</u>	<u>2024</u>	<u>2025</u>	<u>2026</u>
Revenue vehicle hours	106,653	125,000	129,000	130,000	130,000	130,000	130,000
Total vehicle hours	121,930	140,000	145,000	145,000	145,000	145,000	145,000
Revenue vehicle miles	1,780,337	1,900,000	2,100,000	2,100,000	2,100,000	2,100,000	2,100,000
Total vehicle miles	2,141,384	2,100,000	2,400,000	2,400,000	2,400,000	2,400,000	2,400,000
Passenger trips	986,030	1,000,000	2,200,000	2,400,000	2,500,000	2,650,000	2,650,000
<i>Fatalities</i>	<i>0</i>	Diesel fuel consumed (gal)			382,567		
<i>Reportable injuries</i>	<i>4</i>	Propane			5,108		
<i>Collisions</i>	<i>1</i>						
<u>Demand Response Service</u>	<u>2020</u>	<u>2021</u>	<u>2022</u>	<u>2023</u>	<u>2024</u>	<u>2025</u>	<u>2026</u>
Revenue vehicle hours	57,380	70,000	72,500	75,000	80,000	80,000	80,000
Total vehicle hours	67,404	80,000	82,000	85,000	90,000	90,000	90,000
Revenue vehicle miles	839,090	1,000,000	1,300,000	1,310,000	1,320,000	1,330,000	1,340,000
Total vehicle miles	999,601	1,100,000	1,625,000	1,655,000	1,700,000	1,710,000	1,720,000
Passenger trips	134,977	150,000	305,000	310,000	311,000	312,000	320,000
Fatalities	0	Diesel fuel consumed (gal)			32,564		
Reportable injuries	0	Gasoline consumed (gal)			1,289		
Collisions	1	Propane			139,049		
<u>Worker/Driver Service</u>	<u>2020</u>	<u>2021</u>	<u>2022</u>	<u>2023</u>	<u>2024</u>	<u>2025</u>	<u>2026</u>
Revenue vehicle hours	16,259	16,500	16,500	16,500	16,500	16,500	16,500
Total vehicle hours	20,466	21,000	21,000	21,000	21,000	21,000	21,000
Revenue vehicle miles	354,376	355,000	355,000	355,000	355,000	355,000	355,000
Total vehicle miles	387,410	388,000	388,000	388,000	388,000	388,000	388,000
Passenger trips	234,734	400,000	425,000	425,000	425,000	425,000	425,000
Fatalities	0	Diesel fuel consumed (gal)			88,500		
Reportable injuries	0						
Collisions	0						

<u>Vanpool Service</u>	<u>2020</u>	<u>2021</u>	<u>2022</u>	<u>2023</u>	<u>2024</u>	<u>2025</u>	<u>2026</u>
Revenue vehicle hours	13,981	15,000	29,000	30,000	30,000	30,000	30,000
Total vehicle hours	13,981	15,000	29,000	30,000	30,000	30,000	30,000
Revenue vehicle miles	419,490	450,000	825,000	850,000	850,000	850,000	850,000
Total vehicle miles	419,490	450,000	825,000	850,000	850,000	850,000	850,000
Passenger trips	77,466	110,000	190,000	200,000	200,000	200,000	205,000
Fatalities	0	Diesel fuel consumed (gal)			2,412		
Reportable injuries	0	Gasoline consumed (gal)			2,680		
Collisions	0						
<u>Foot Ferry Service</u>	<u>2020</u>	<u>2021</u>	<u>2022</u>	<u>2023</u>	<u>2024</u>	<u>2025</u>	<u>2026</u>
Revenue vehicle hours	6,135	6,250	6,750	6,750	6,750	6,750	6,750
Total vehicle hours	6,198	6,300	6,800	6,800	6,800	6,800	6,800
Revenue vehicle miles	42,924	44,500	44,500	44,500	44,500	44,500	44,500
Total vehicle miles	43,363	45,000	45,000	45,000	45,000	45,000	45,000
Passenger trips	279,499	400,000	600,000	600,000	600,000	600,000	600,000
Fatalities	0	Diesel fuel consumed (gal)			39,879		
Reportable injuries	0	Gasoline consumed (gal)			0		
Collisions	0						
<u>Fast Ferry Service</u>	<u>2020</u>	<u>2021</u>	<u>2022</u>	<u>2023</u>	<u>2024</u>	<u>2025</u>	<u>2026</u>
Revenue vehicle hours	6,184	7,000	8,200	8,200	8,200	8,200	8,200
Total vehicle hours	6,184	7,000	8,200	8,200	8,200	8,200	8,200
Revenue vehicle miles	145,100	175,000	175,000	175,000	175,000	175,000	175,000
Total vehicle miles	145,100	175,000	175,000	175,000	175,000	175,000	175,000
Passenger trips	236,160	334,912	405,000	437,602	495,000	495,000	495,000
Fatalities	0	Diesel fuel consumed (gal)			601,050		
Reportable injuries	0						
Collisions	0						
<i>Safety related data (fatalities, injuries, and collisions) based on NTD definitions.</i>							

Section IX: Operating Revenues and Expenditures, 2020 – 2026

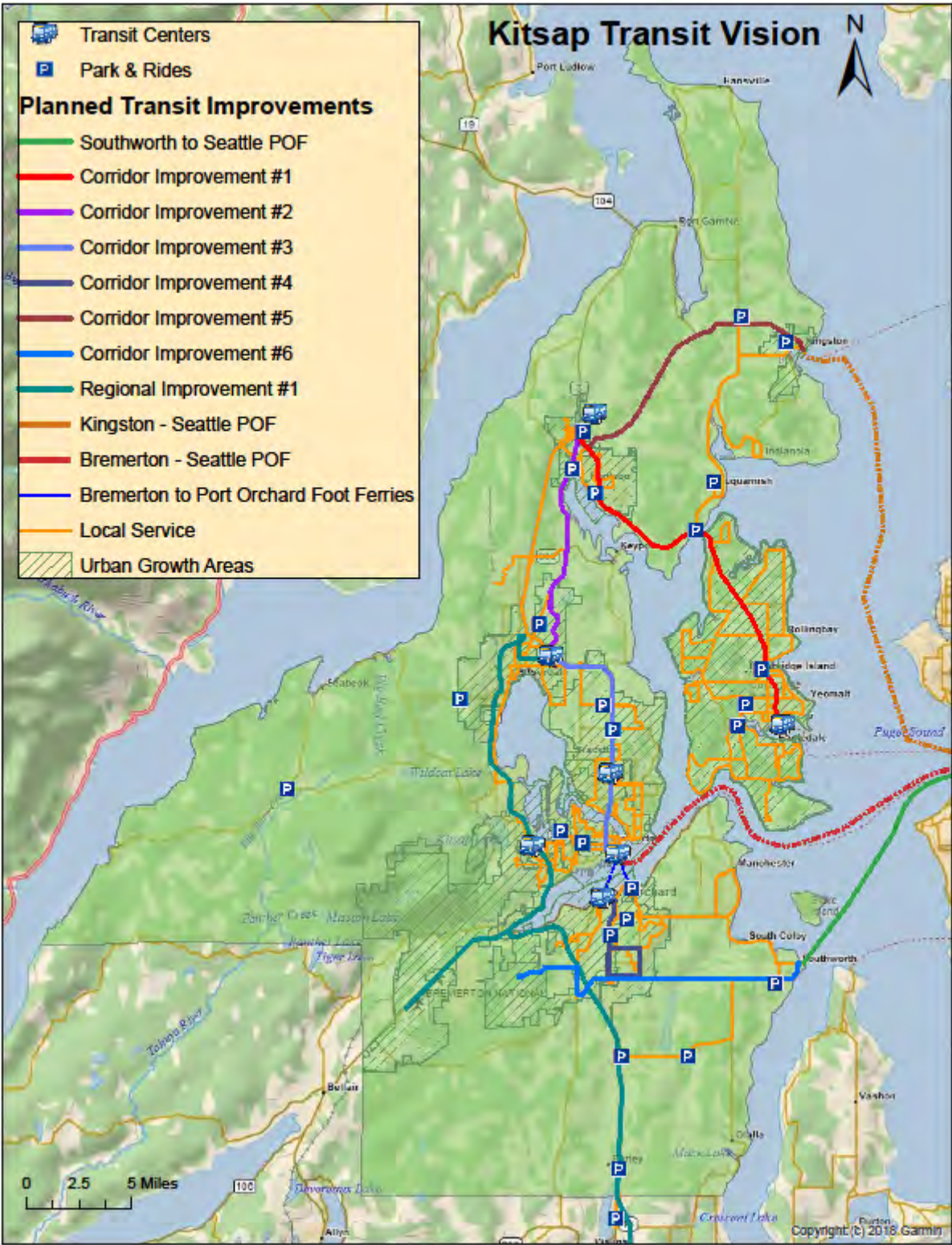
Transit Development Plan - Final

Section IX - Operating Revenues and Expenditures (2020 - 2026)

(Dollars in thousands)

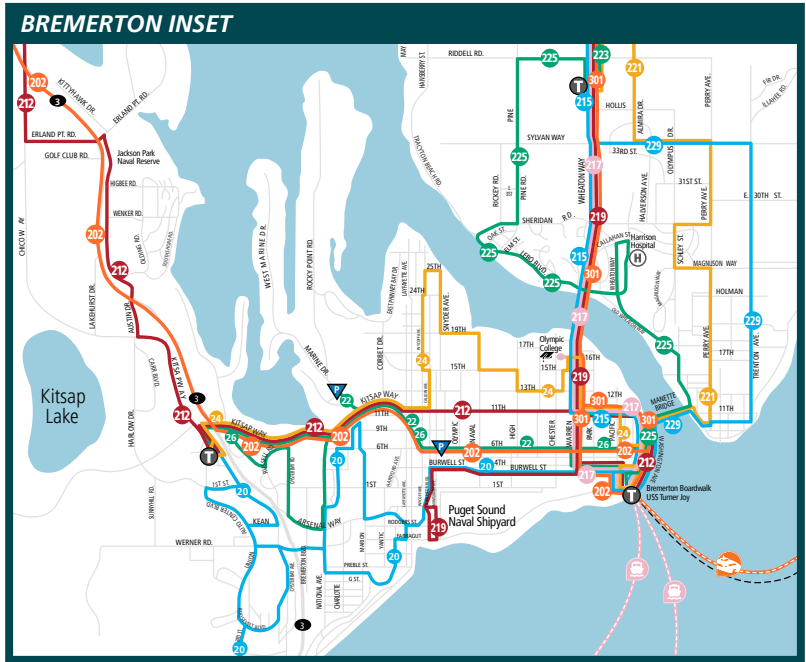
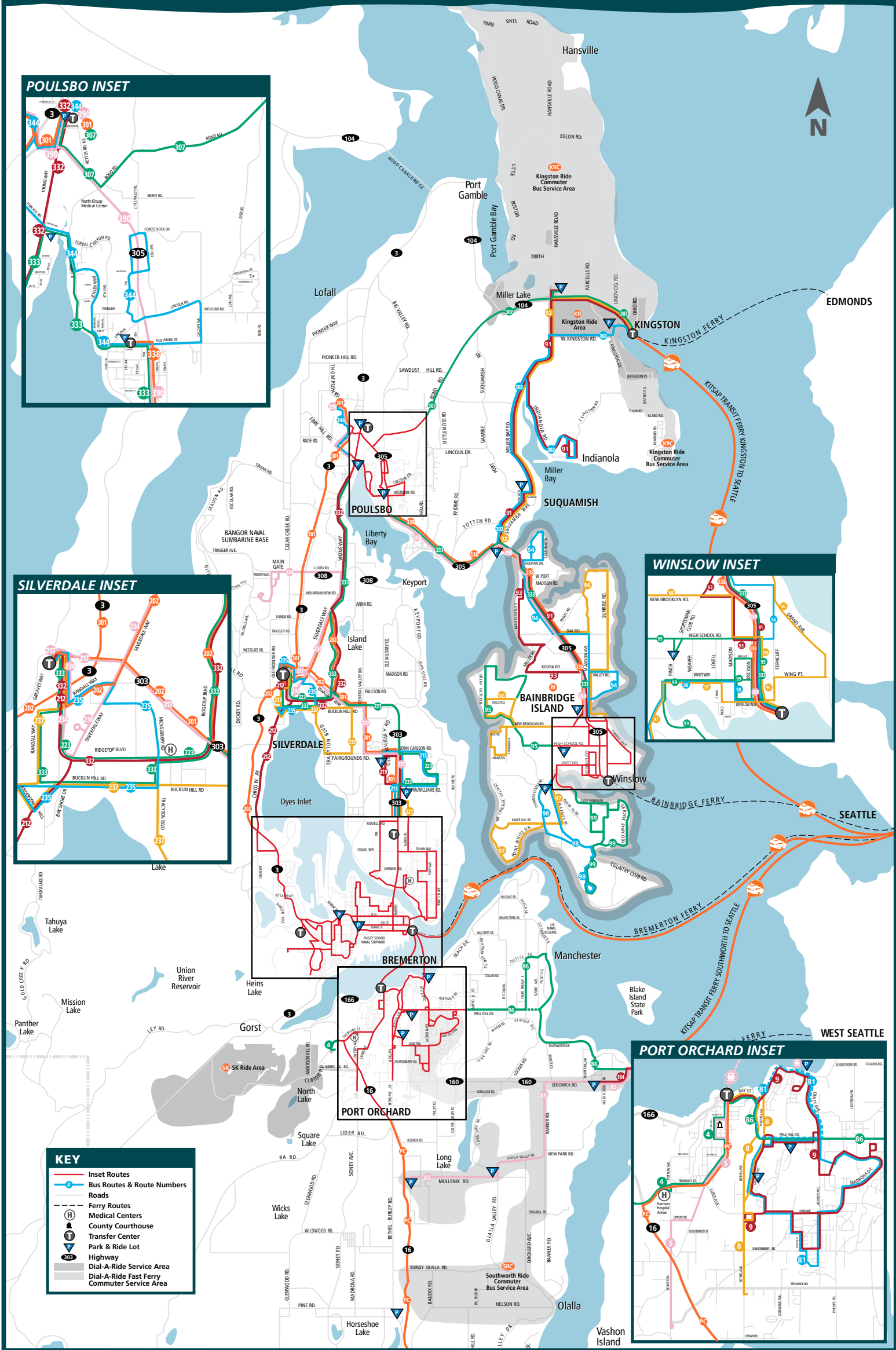
	Actual 2020	Budget 2021	Outlook				
			2022	2023	2024	2025	2026
REVENUES							
FARES - ROUTED	1,093	1,720	1,912	1,931	1,950	1,970	1,990
FARES - WORKER DRIVER	804	1,222	1,048	1,059	1,069	1,080	1,091
FARES - VANPOOL	175	254	318	321	324	328	331
FARES - DEMAND RESPONSE	99	172	191	193	195	197	199
FARES - FERRY	1,693	3,395	3,253	3,416	3,587	3,767	3,956
PARKING REVENUE	134	143	143	144	146	147	149
ADVERTISING REVENUE	7	-	-	-	-	-	-
RENTAL INCOME	437	524	524	524	424	424	424
SALES TAX - NET	61,655	57,730	67,821	71,085	74,176	77,053	79,929
OPERATING GRANTS	1,739	361	441	380	380	380	380
INTEREST INCOME	469	290	325	376	401	427	455
OTHER INCOME (EXPENSE)	68	12	15	15	15	16	16
TOTAL REVENUES	68,373	65,823	75,991	79,444	82,668	85,787	88,918
OPERATING EXPENSES							
ROUTED SERVICE	23,527	24,891	26,615	27,946	29,343	30,810	32,351
WORKER DRIVER	3,730	4,107	4,157	4,365	4,583	4,812	5,053
VANPOOL	1,092	1,170	1,206	1,266	1,329	1,395	1,465
DEMAND RESPONSE	12,831	14,294	14,826	15,567	16,345	17,162	18,020
FERRY	10,629	13,971	14,535	15,261	16,025	16,827	17,669
TOTAL OPERATING EXPENSES	51,808	58,432	61,339	64,405	67,625	71,006	74,558
NET CASH AVAILABLE FROM OPERATIONS	16,565	7,391	14,652	15,039	15,043	14,781	14,360
BEGINNING UNRESTRICTED RESERVES	32,055	49,000	40,356	27,904	23,338	25,790	35,513
NET CASH AVAILABLE FROM OPS	16,565	7,391	17,915	18,130	17,919	17,658	16,925
PRINCIPAL AND INTEREST PAYMENT	(4,665)	(4,658)	(4,024)	(4,018)	(4,005)	(3,996)	(3,707)
CAPITAL EXPENDITURES, NET	(2,096)	(19,668)	(30,014)	(20,898)	(12,483)	(3,959)	(14,100)
RESERVES	4,386	1,000	3,671	2,220	1,020	20	20
OTHER, NET	(5,159)	-	-	-	-	-	-
ENDING UNRESTRICTED RESERVES	41,087	33,065	27,904	23,338	25,790	35,513	34,651

Section X: Transit System Vision Map



Appendix I: Routed System Map

Kitsap Transit System Map



9	South Park	5	Sidney
91	Kingston/Bainbridge	85	Mullenix Express
93	Manzanita	217	Bremerton/Silverdale East
184	Harper Shuttle	234	Kitsap Mall/Bangor
212	Bremerton/Silverdale West	390	Poulsbo/Bainbridge
219	Crossroads Commuter		Local Foot Ferries
332	Poulsbo/Silverdale		
20	Navy Yard City	4	Tremont
81	Annapolis Commuter	22	Gateway Express
94	Agate Point	26	Bay Vista
98	Fort Ward	86	Southworth Shuttle
215	McWilliams Commuter	95	Battle Point
229	Trenton Commuter	99	Bill Point
235	East Silverdale Old Town	223	Kariotis
302	Kingston/Suquamish Fast Ferry	225	Sheridan Park
344	Poulsbo Central	307	Kingston/North Viking Fast Ferry Express
		333	Silverdale/Bainbridge
8	Bethel	202	Central Kitsap Fast Ferry Express
24	Olympic College	301	North Kitsap Fast Ferry Express
92	Kingston/Suquamish	338	Gateway/Bainbridge Express
96	Sunrise		Fast Ferry Bremerton - Seattle
97	Crystal Springs		Fast Ferry Kingston - Seattle
106	Fletcher Bay		Fast Ferry Southworth - Seattle
221	Perry Avenue	PC	Purdy Connection
237	West Silverdale/Fairgrounds		
		KRC	Kingston Ride Fast Ferry Commuter
		SRC	Southworth Ride Fast ferry Commuter
		KR	Kingston Ride
		SK	SK Ride
		BI	BI Ride

This map is intended for general transit information only, and subject to change. Refer to individual schedules for specific information.

Appendix II: Equipment & Facilities Asset Inventory

Public Transportation Management System Owned Equipment Inventory

Agency: Kitsap Transit

Support vehicle and equipment with a acquisition value greater than \$50,000
Refer to instructions for equipment code

I hereby certify that all information reported in the inventories reflects true, accurate and complete information for the agency/organization listed and that project equipment purchased through a state or federal grant agreement is still being used in accordance with the terms and conditions of the grant agreement.

Dennis Griffey

Signature and Title

02/09/21

Date

* Approximate replacement cost generated by calculating 2%/year for the age of asset.

No.	Code	Equipment Description	Condition (points)	Age (years)	Remaining Useful Life (years)	Approximate Replacement Cost*	Comments (If more than two lines, attach a separate comment page)
1	9	2018 Alignment Equipment	4	2	20	\$71,760.00	
2	9	70Q ROTARY INFLOOR LIFT	3	18	5	\$138,720.00	
3	4	Automatic Passenger Counters	4	5	5	\$431,200.00	
4	10	DIST SIGNS	2	26	4	\$202,160.00	
5	9	Oil Analysis System	3	6	3	\$57,120.00	
6	15	Onan Generator	3	20	10	\$100,000.00	
7	4	Opticom System Upgrade	3	6	5	\$258,720.00	
8	15	South Base Generator	4	6	15	\$59,400.00	
9	8	Radio Controller/Repeaters	3	17	10	\$113,900.00	
10	8	Add'l Cost Changing to Cencom	5	10	7	\$68,400.00	
11	3	Security System (MULLENIX P/R)	2	15	5	\$100,000.00	
12	4	Transit Fleet Software	4	5	10	\$101,200.00	
13	4	Access Data Terminals	3	4	5	\$131,760.00	
14	4	ORCA System Capital Improvements	1	3	2	\$164,300.00	
15	4	Automatic Passenger System	4	1	7	\$268,260.00	
16	8	Radio Upgrade System	5	1	8	\$1,031,000.00	

Owned Facility Inventory Form

I hereby certify that all information reported in the inventories reflects true, accurate and complete information for the agency/organization listed and that project equipment purchased through a state or federal grant agreement is still being used in accordance with the terms and conditions of the grant agreement.

Facilities with a replacement value of \$25,000 or greater.

Refer to instructions for facility code.

Dennis Griffey
Signature and Title

02/09/21
Date

Agency/org: Kitsap Transit

Inventory year: 2020

No.	Facility code	Facility name	Condition (points)	Age (year)	Remaining useful life	Replacement cost (\$)	Comments
1	9	Annapolis Park & Ride	3	20		\$159,742.00	Park & Ride Only
2	6	Bainbridge Island Transfer Center (BITC)	3	20		\$213,199.00	Upgrades scheduled for Spring 2020.
3	6	Bremerton Transportation Center (BTC)	3	20		\$1,732,016.00	
4	23	Charleston Base (CB)	3	19		\$4,396,462.00	
5	21	CB Fuel Building	3	19		\$1,414,889.00	
6	21	CB Wash Building	3	19		\$792,535.00	
7	11	Gateway	3	40*		\$11,600,000.00	Purchased 06/10/20. *Age is approximate.
8	9	George's Corner Park & Ride	3	21		\$102,335.00	
9	10	Harborside	4	18		\$14,639,554.00	
10	9	Harper Park & Ride	3	11		\$194,723.00	
11	24	Hilltop	3	34		\$439,160.00	
12	23	North Base (NB)	5	5		\$771,350.00	
13	21	NB Wash Building A	5	5		\$1,324,929.00	
14	21	NB Fuel Building B	5	5		\$1,104,213.00	
15	6	North Viking Transfer Center	5	5		\$975,557.00	
16	24	Parker Lumber	2			SOLD	Sold as of 01/25/19.
17	23	South Base	2	12		\$863,378.00	
18	10	SB Training Building	3	12		\$226,109.00	
19	6	Wheaton Way Transfer Center (WWTC)	5	1		\$12,500,000.00	Grand Opening 11/25/19.
20	23	WWTC Drivers Building	5	<1		\$683,900.00	Opened to drivers July 2020.
21	7	A-Float	3	19		\$8,190,000	
22	7	B-Float	3	20		\$9,690,000	
23	7	M-Float	5	19		\$1,960,000	
24	7	Annapolis Dock	5	5		\$12,523,944	
25	17	POIT (Port Orchard Intermodal Terminal, th	3	16		\$3,850,000	

Appendix III: Fleet Inventory

KITSAP TRANSIT 12/30/2020 Vehicle Listing

Vehicle #	Fleet			Year	Mileage	License	VIN#
12	TRUCK	95CHEVDMPTRK	TRUCK K2PU	1995	178482	32211C	1GBJK34N4SE131576
14	TRUCK	98GMCFUELTRK	FUEL TANK TRUCK	1998	134140	32493C	1GDM7H1C7WJ519114
16	TRUCK	02INT4200	4200 VT365	2002	91960	57390C	1HTMLAFM43H577504
17	TRUCK	02INT4200	4200 VT365	2002	98300	57391C	1HTMLAFM63H577505
18	TRUCK	03INTFUELTRK	FUEL TRUCK	2003	194094	67028C	1HTMKAAR73H601445
19	TRUCK	03F350PTRK	F350 TRUCK	2003	208568	62866C	1FTSF31PX3EC58442
20	TRUCK	04F350TRK	F350 TRUCK	2004	129091	70416C	1FTSF31P94ED13125
21	TRUCK	08F450SHPTRK	F450 SHOP TRUCK	2008	55011	86793C	1FDXF47R78EE58086
22	TRUCK	11FRDSHPTRK	F450 SHOP TRUCK	2011	105480	95598C	1FD0X4GT3BEB33033
23	NONREV	12FRDESCAPE	ESCAPE NON HYBRID	2012	77701	98828C	1FMCU9C73CKB33600
24	TRUCK	13F150PTRK	F-150	2013	121698	A4449C	1FTPF1CF6DKE57571
25	TRUCK	13F150PTRK	F-150	2013	108553	A4450C	1FTPF1CF4DKE57570
26	TRUCK	15F250PTRK	F-250P	2015	102105	A9350C	1FT7X2A6XFE63940
27	TRUCK	15F250PTRK	F-250P	2015	60352	A9351C	1FT7X2A61FEB63941
28	TRUCK	16F250PTRK	F-250P SHOP	2016	21795	B4891C	1FTBF2B60GED00929
29	TRUCK	16F250PTRK	F-250P SHOP	2016	23736	B4892C	1FTBF2B69GED00928
30	TRUCK	17FORDDUMP	DUMP	2017	33807	B9722C	1FDUF5HT3HED20645
31	TRUCK	19F350TRK	F350	2019	17888	C1885C	1FT8X3A62KEC43947
32	TRUCK	19SWEEPTRK	ISU / SWEEPER TRUCK	2019	3222	C5174C	JALC4W167K7K01118
33	NONREV	20FRDTRANS-C		2020	2461	C902D	1FTRS4UG7LKB17695
150	NONREV	02TOYPRIUS	PRIUS	2002	147614	62758C	JT2BK12U820055476
151	NONREV	02TOYPRIUS	PRIUS	2002	75323	62755C	JT2BK12U020055617
152	NONREV	02TOYPRIUS	PRIUS	2002	94909	62757C	JT2BK12UX20055754
153	NONREV	02TOYPRIUS	PRIUS	2002	57997	62756C	JT2BK12UX20055883
160	SCOOT	2005HONDACVC	HONDA CIVIC HYBRID ELECT	2005	28322	74312C	JHMES966X5S004311
161	SCOOT	2005HONDACVC	HONDA CIVIC HYBRID ELECT	2005	24802	74313C	JHMES966X5S005491
162	SCOOT	2005HONDACVC	HONDA CIVIC HYBRID ELECT	2005	25616	74314C	JHMES9669S001786
163	SCOOT	2005HONDACVC	HONDA CIVIC HYBRID ELECT	2005	26133	74310C	JHMES9665S004314
164	SCOOT	2005HONDACVC	HONDA CIVIC HYBRID ELECT	2005	21121	74315C	JHMES9667S000992
165	SCOOT	2005HONDACVC	HONDA CIVIC HYBRID ELECT	2005	24192	74311C	JHMES9664S004062
166	SCOOT	2005HONDACVC	HONDA CIVIC HYBRID ELECT	2005	18704	74316C	JHMES9666S001986
167	SCOOT	2005HONDACVC	HONDA CIVIC HYBRID ELECT	2005	24190	74309C	JHMES9668S001665
170	NONREV	08FRDFOCUS	FOCUS	2008	30593	86730C	1FAHP35N98W230851
171	NONREV	08FRDFOCUS	FOCUS	2008	47387	86748C	1FAHP35N08W230852
172	NONREV	08FRDFOCUS	FOCUS	2008	45494	86749C	1FAHP35N28W230853
173	NONREV	08FRDFOCUS	FOCUS	2008	85226	86729C	1FAHP35N48W230854
180	NONREV	08FRDESCAPE	ESCAPE	2008	68144	86787C	1FMCU59H18KE43566
181	NONREV	08FRDESCAPE	ESCAPE	2008	60561	86788C	1FMCU59H38KE43567
182	NONREV	12FRDESCAPE	ESCAPE NON HYBRID	2012	28030	98831C	1FMCU9C76CKB33610
183	NONREV	12FRDESCAPE	ESCAPE NON HYBRID	2012	28566	98847C	1FMCU975CKB33615
184	NONREV	20FRDTRANSIT	TRANSIT	2020	2324	C0903D	1FMZK2C82LKA63989
185	NONREV	20FRDTRANSIT	TRANSIT	2020	4700	C2765D	1FMZK2C89LKA63990
186	NONREV	20FRDTRANSIT	TRANSIT	2020	2193	C2766D	1FMZK2C82LKA63992
187	NONREV	20FRDTRANSIT	TRANSIT	2020	793	C2771D	1FMZK2C80LKA63991
500	E350	02E35020	ECONOLINE RAISED ROOF 20	2002	145972	62762C	1FTSS34F02HB40113
502	E350	02E35020	ECONOLINE RAISED ROOF 20	2002	131800	62760C	1FTSS34F02HB40119
505	E350	02E35020	ECONOLINE RAISED ROOF 20	2002	132450	62763C	1FTSS34F12HB40114
515	E350	03E35020	ECONOLINE 350 20-	2003	269563	62898C	1FDSS34F73HB09284
516	E350	03E35020	ECONOLINE 350 20-	2003	150879	62897C	1FDSS34F93HB09285
517	E350	03E35020	ECONOLINE 350 20-	2003	186092	62896C	1FDSS34F23HB09286
518	E350	03E35020	ECONOLINE 350 20-	2003	158435	62895C	1FDSS34F23HB09287
519	E350	03E35020	ECONOLINE 350 20-	2003	143024	62899C	1FDSS34F43HB09288
529	E350	05E350RR20	ECONOLINE RAISED ROOF 20	2005	108450	74391C	1FTSS34P16HA04323
531	E350	04E35020	ECONOLINE 350 20-	2004	165210	RS04821	1FDNE31P84HA55805
533	E350	04E35020	ECONOLINE 350 20-	2004	132106	RS04809	1FDNE31P14HA55807
539	E350	04E35020	ECONOLINE 350 20-	2004	214214	RS04793	1FDNE31P74HA55813
541	E350	04E35020	ECONOLINE 350 20-	2004	65651	RS04810	1FDNE31P04HA55815
542	E350	04E35020	ECONOLINE 350 20-	2004	47153	RS04823	1FDNE31P24HA55816
543	E350	04E35020	ECONOLINE 350 20-	2004	60118	RS04802	1FDNE31P44HA55817
545	E350	04E35020	ECONOLINE 350 20-	2004	58605	RS04819	1FDNE31P84HA55819
546	E350	04E35020	ECONOLINE 350 20-	2004	80246	RS04800	1FDNE31P44HA55820
547	E350	04E35020	ECONOLINE 350 20-	2004	38320	RS04817	1FDNE31P64HA55821
550	E350	04E35020	ECONOLINE 350 20-	2004	46199	RS04783	1FDNE31P14HA55824
551	E350	04E35020	ECONOLINE 350 20-	2004	62249	RS04781	1FDNE31P34HA55825
552	E350	04E35020	ECONOLINE 350 20-	2004	66155	RS04814	1FDNE31P54HA55826
554	E350	04E35020	ECONOLINE 350 20-	2004	26587	RS04811	1FDNE31P94HA55828
556	E350	04E35020	ECONOLINE 350 20-	2004	75526	RS04807	1FDNE31P74HA55830
557	E350	04E35020	ECONOLINE 350 20-	2004	90176	RS04812	1FDNE31P94HA55831
559	E350	04E35020	ECONOLINE 350 20-	2004	84433	RS04782	1FDNE31P24HA55833
560	E350	04E35020	ECONOLINE 350 20-	2004	174672	RS04784	1FDNE31P44HA55834
563	E350	04E35020	ECONOLINE 350 20-	2004	103445	RS04806	1FDNE31PX4HA55837
564	E350	04E35020	ECONOLINE 350 20-	2004	60072	RS04785	1FDSS31P74HA55838
565	E350	04E35020	ECONOLINE 350 20-	2004	41278	RS04786	1FDSS31P94HA55839
569	E350	04E35020	ECONOLINE 350 20-	2004	57948	RS04779	1FDSS31P04HA55843
574	E350	04E35020	CLUB WAGON	2004	65902	RS05102	1FDNE31P24HB40753
577	E350	04E35020	CLUB WAGON	2004	76590	RS05105	1FDNE31P84HB40756

579	E350	04E35020	CLUB WAGON	2004	130607	RS05107	1FDNE31P14HB40758
580	E350	04E35020	CLUB WAGON	2004	80934	RS05108	1FDNE31P34HB40759
581	E350	04E35020	CLUB WAGON	2004	63346	RS05109	1FDNE31PX4HB40760
582	E350	04E35018	CLUBWAGON	2004	60663	RS05110	1FDNE31P14HB40761
583	E350	06E35020	ECONOLINE 350 20-	2006	94531	RS05665	1FDNE31PX6HA09847
584	E350	06E35020	ECONOLINE 350 20-	2006	121815	RS05666	1FDNE31P16HA09848
585	E350	06E35020	ECONOLINE 350 20-	2006	131873	RS05672	1FDNE31P36HA09849
586	E350	06E35020	ECONOLINE 350 20-	2006	123432	RS05667	1FDNE31PX6HA09850
588	E350	06E35020	ECONOLINE 350 20-	2006	136294	RS05669	1FDNE31P36HA09852
589	E350	06E35020	ECONOLINE 350 20-	2006	105547	RS05668	1FDNE31P56HA09853
590	E350	06E35020	ECONOLINE 350 20-	2006	89440	RS05671	1FDNE31P76HA09854
591	E350	06E35020	ECONOLINE 350 20-	2006	115070	RS05675	1FDNE31P86HA09846
593	E350	06E35020	ECONOLINE 350 20-	2006	73615	RS05674	1FDNE31P26HA09857
594	E350	06E35020	ECONOLINE 350 20-	2006	112027	RS05676	1FDNE31P46HA09858
595	E350	06E35020	ECONOLINE 350 20-	2006	79040	RS05677	1FDNE31P96HA09855
596	E350	06E350	VAN	2006	91133	RSO6037	1FDNE31PX6DA36943
598	E350	06E350	VAN	2006	58582	RSO6098	1FDNE31P16DA36944
599	E350	06E350	VAN	2006	91185	RSO6099	1FDNE31P86DA36942
600	E350	06E350	VAN	2006	77148	RSO6112	1FDNE31P96DA36948
601	E350	06E350	VAN	2006	82002	RSO6113	1FDNE31P96DA36951
602	E350	06E350	VAN	2006	65915	RSO6116	1FDNE31P76DA36950
603	E350	06E350	VAN	2006	62676	RSO6114	1FDNE31P76DA36947
605	E350	06E350	VAN	2006	58074	RSO6118	1FDNE31P06DA36949
607	E350	06E350	VAN	2006	66046	RSO6120	1FDNE31P46DA36954
608	E350	06E350	VAN	2006	58010	RSO6119	1FDNE31P06DA36952
609	E350	06E35020	ECONOLINE 350 20-	2006	28569	RS06557	1SDNE31P56DB02363
610	E350	06E350	E31 CLUB WAGON	2006	81483	RS06579	1FDNE31P86DB39052
611	E350	06E350	E31 CLUB WAGON	2006	71665	RS06578	1FDNE31P46DB39050
612	E350	06E350	E31 CLUB WAGON	2006	105919	RS06580	1FDNE31P66DB39048
613	E350	06E350	E31 CLUB WAGON	2006	37892	RS06581	1FDNE31P66DB39051
614	E350	06E350	E31 CLUB WAGON	2006	65729	RS06582	1FDNE31PX6DB39053
615	E350	06E350	E31 CLUB WAGON	2006	96830	RS06575	1FDNE31P36DB39055
616	E350	06E350	E31 CLUB WAGON	2006	44712	RS06574	1FDNE31P86DB39049
617	E350	06E350	E31 CLUB WAGON	2006	60166	RS06576	1FDNE31P16DB39054
618	E350	06E350	E31 CLUB WAGON	2006	52541	RS06577	1FDNE31P56DB39056
619	E350	06E350	E31 CLUB WAGON	2006	61108	RS06584	1FDNE31P76DB39057
621	E350	06E350	E350	2006	82058	RS06583	1FDNE31P96DB39058
622	E350	08E350	E31 CLUB WAGON	2008	49502	RS07439	1FDNE31L48DB40117
623	E350	08E350	E31 CLUB WAGON	2008	71068	RS07438	1FDNE31L68DB40118
624	E350	08E350	E31 CLUB WAGON	2008	95557	RS07436	1FDNE31L88DB40119
625	E350	08E350	E31 CLUB WAGON	2008	86860	RS07440	1FDNE31L48DB40120
626	E350	08E350	E31 CLUB WAGON	2008	117622	RS07437	1FDNE31L68DB40121
627	E350	08E350	E31 CLUB WAGON	2008	77343	RS07443	1FDNE31L88DB40122
628	E350	08E350	E31 CLUB WAGON	2008	77005	RS07442	1FDNE31LX8DB40123
629	E350	08E350	E31 CLUB WAGON	2008	72852	RS07445	1FDNE31L18DB40124
630	E350	08E350	E31 CLUB WAGON	2008	66413	RS07441	1FDNE31L38DB40125
730	GILLIG-PHNTM	2003GIL40FT	40- 730-749 PHANTOM	2003	482751	62868C	15GDD271531111814
731	GILLIG-PHNTM	2003GIL40FT	40- 730-749 PHANTOM	2003	450231	62870C	15GDD271731111815
732	GILLIG-PHNTM	2003GIL40FT	40- 730-749 PHANTOM	2003	509282	62871C	15GDD271931111816
733	GILLIG-PHNTM	2003GIL40FT	40- 730-749 PHANTOM	2003	504216	62872C	15GDD271031111817
734	GILLIG-PHNTM	2003GIL40FT	40- 730-749 PHANTOM	2003	496433	62873C	15GDD271231111818
735	GILLIG-PHNTM	2003GIL40FT	40- 730-749 PHANTOM	2003	472634	62874C	15GDD271431111819
736	GILLIG-PHNTM	2003GIL40FT	40- 730-749 PHANTOM	2003	503157	62876C	15GDD271031111820
737	GILLIG-PHNTM	2003GIL40FT	40- 730-749 PHANTOM	2003	536983	62877C	15GDD271231111821
739	GILLIG-PHNTM	2003GIL40FT	40- 730-749 PHANTOM	2003	433273	62879C	15GDD271631111823
740	GILLIG-PHNTM	2003GIL40FT	40- 730-749 PHANTOM	2003	450437	62883C	15GDD271831111824
741	GILLIG-PHNTM	2003GIL40FT	40- 730-749 PHANTOM	2003	481027	62885C	15GDD271X31111825
742	GILLIG-PHNTM	2003GIL40FT	40- 730-749 PHANTOM	2003	431731	62886C	15GDD271131111826
743	GILLIG-PHNTM	2003GIL40FT	40- 730-749 PHANTOM	2003	435994	62887C	15GDD271331111827
744	GILLIG-PHNTM	2003GIL40FT	40- 730-749 PHANTOM	2003	538301	62888C	15GDD271531111828
745	GILLIG-PHNTM	2003GIL40FT	40- 730-749 PHANTOM	2003	403817	62884C	15GDD271731111829
746	GILLIG-PHNTM	2003GIL40FT	40- 730-749 PHANTOM	2003	467034	62894C	15GDD271331111830
747	GILLIG-PHNTM	2003GIL40FT	40- 730-749 PHANTOM	2003	443057	62892C	15GDD271531111831
750	GILLIG-LF	2003GIL35FT	35- 750&751 LOW FLOOR	2003	500798	62891C	15GGD27123073522
751	GILLIG-LF	2003GIL35FT	35- 750&751 LOW FLOOR	2003	539816	62893C	15GGD271431073523
752	GILLIG-LF	2004GIL35FT	35- 752-761 LOW FLOOR	2004	552632	70433C	15GGB291041074091
753	GILLIG-LF	2004GIL35FT	35- 752-761 LOW FLOOR	2004	605827	70434C	15GGB291241074092
754	GILLIG-LF	2004GIL35FT	35- 752-761 LOW FLOOR	2004	628524	70435C	15GGB291441074093
755	GILLIG-LF	2004GIL35FT	35- 752-761 LOW FLOOR	2004	605111	70436C	15GGB291641074094
756	GILLIG-LF	2004GIL35FT	35- 752-761 LOW FLOOR	2004	555754	70437C	15GGB291841074095
757	GILLIG-LF	2004GIL35FT	35- 752-761 LOW FLOOR	2004	608998	70438C	15GGB291X41074096
758	GILLIG-LF	2004GIL35FT	35- 752-761 LOW FLOOR	2004	610852	70439C	15GGB291141074097
759	GILLIG-LF	2004GIL35FT	35- 752-761 LOW FLOOR	2004	548791	70440C	15GGB291341074098
760	GILLIG-LF	2004GIL35FT	35- 752-761 LOW FLOOR	2004	571262	70441C	15GGB291541074099
761	GILLIG-LF	2004GIL35FT	35- 752-761 LOW FLOOR	2004	661974	70442C	15GGB291841074100
762	GILLIG-LF	2005GIL35FT	35- 762-766 LOW FLOOR	2005	549623	74334C	15GGB291851074101
763	GILLIG-LF	2005GIL35FT	35- 762-766 LOW FLOOR	2005	521607	74335C	15GGB291X51074102
764	GILLIG-LF	2005GIL35FT	35- 762-766 LOW FLOOR	2005	597384	74336C	15GGB291151074103

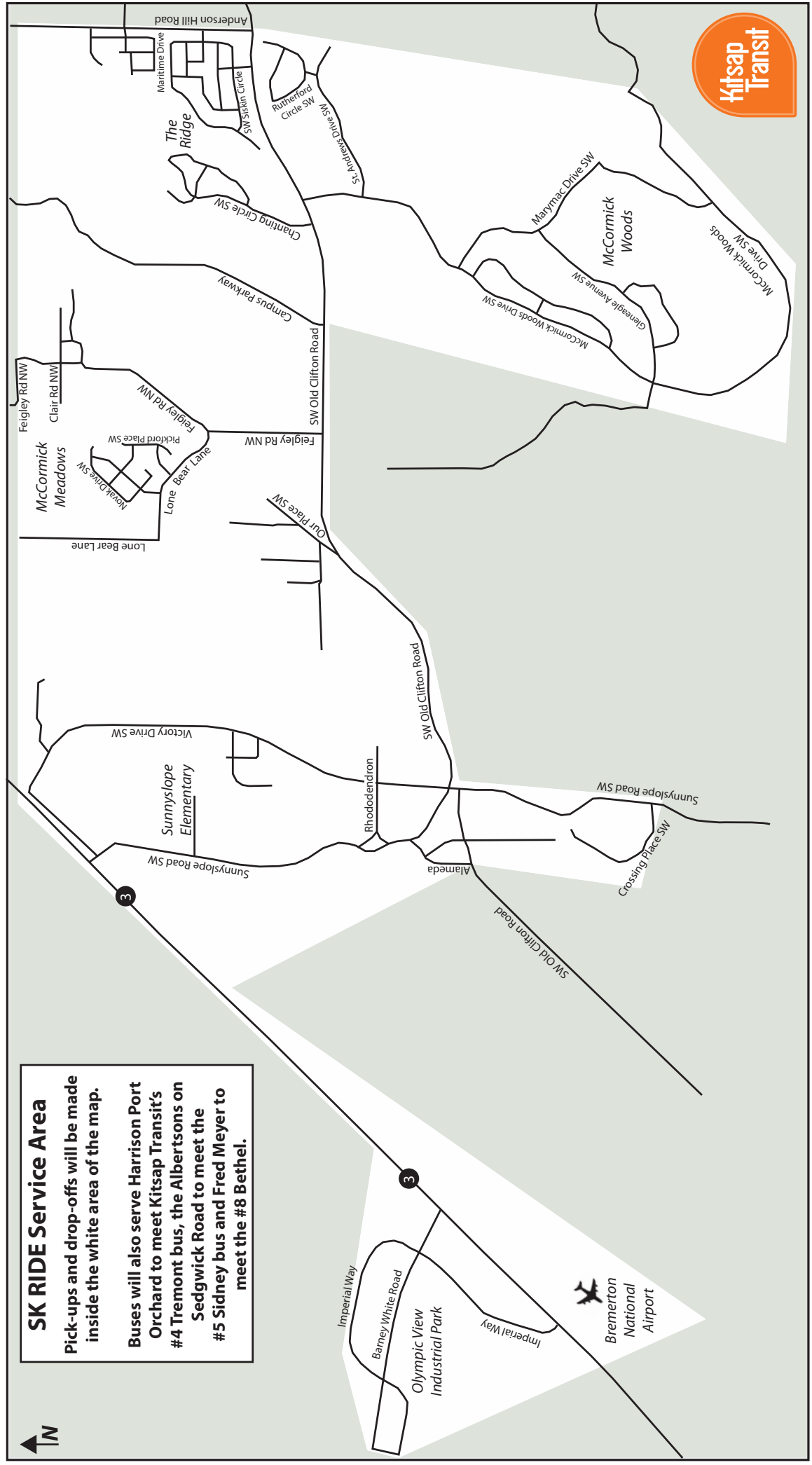
765	GILLIG-LF	2005GIL35FT	35- 762-766 LOW FLOOR	2005	541908	74337C	15GGB291351074104
766	GILLIG-LF	2005GIL35FT	35- 762-766 LOW FLOOR	2005	552910	74338C	15GGB291551074105
770	GILLIG-LF	2004GIL40FT	40- 770-774 LOW FLOOR	2004	690086	70428C	15GGB291641074106
771	GILLIG-LF	2004GIL40FT	40- 770-774 LOW FLOOR	2004	589157	70429C	15GGB291841074107
772	GILLIG-LF	2004GIL40FT	40- 770-774 LOW FLOOR	2004	609728	70430C	15GGB291X41074108
773	GILLIG-LF	2004GIL40FT	40- 770-774 LOW FLOOR	2004	488987	70431C	15GGB291141074109
774	GILLIG-LF	2004GIL40FT	40- 770-774 LOW FLOOR	2004	449194	70443C	15GGB291841074110
775	GILLIG-LF	2005GIL40FT	40- 775-779 LOW FLOOR	2005	529341	74339C	15GGD291851074111
776	GILLIG-LF	2005GIL40FT	40- 775-779 LOW FLOOR	2005	647384	74340C	15GGD291X51074112
777	GILLIG-LF	2005GIL40FT	40- 775-779 LOW FLOOR	2005	482644	74341C	15GGD291151074113
778	GILLIG-LF	2005GIL40FT	40- 775-779 LOW FLOOR	2005	478652	74342C	15GGD291351074114
779	GILLIG-LF	2005GIL40FT	40- 775-779 LOW FLOOR	2005	530928	74343C	15GGD291551074115
780	GILLIG-LF	2016GIL29FT	29'LOWFLOOR	2016	195934	B4866C	15GGE2710G1093092
781	GILLIG-LF	2016GIL29FT	29'LOWFLOOR	2016	180520	B4867C	15GGE2712G1093093
782	GILLIG-LF	2016GIL29FT	29'LOWFLOOR	2016	180674	B4868C	15GGE2714G1093094
783	GILLIG-LF	2016GIL29FT	29'LOWFLOOR	2016	171920	B4871C	15GGE2716G1093095
784	GILLIG-LF	2016GIL29FT	29'LOWFLOOR	2016	172937	B4872C	15GGE2718G1093096
785	GILLIG-LF	2016GIL29FT	29'LOWFLOOR	2016	179084	B4863C	15GGE2710G1092962
786	GILLIG-LF	2016GIL29FT	29'LOWFLOOR	2016	181321	B4864C	15GGE271261092963
787	GILLIG-LF	2016GIL29FT	29'LOWFLOOR	2016	183207	B4865C	15GGE271461092964
788	GILLIG-LF	2017GIL29FT	LOW FLOOR	2017	115244	B8743C	15GGE2711H3093088
789	GILLIG-LF	2017GIL29FT	LOW FLOOR	2017	136799	B8744C	15GGE2711H3093089
790	STARTRANS	17SENATOR26	E-450P	2017	79266	C0256C	1FDFF4FS4HDC57514
791	STARTRANS	17SENATOR26	E-450P	2017	69732	C0255C	1FDFF4FS9HDC57511
792	GILLIG-LF	2018GIL29FT	29' LOW FLOOR	2018	110139	C1805C	15GGE2712J3093106
793	GILLIG-LF	2018GIL29FT	29' LOW FLOOR	2018	120758	C1804C	15GGE2712J3093107
794	GILLIG-LF	2018GIL29FT	29' LOW FLOOR	2018	119878	C1806C	15GGE2712J3093108
795	GILLIG-LF	2018GIL29FT	29' LOW FLOOR	2018	113460	C1807C	15GGE2712J3093109
800	ELECTRIC	PROTERRA	40' CATALYST	2018	24887	C1811C	1M9TH16J8JL816223
970	ELD AERO	03FDELDE350	ELDORADO AEROTECH 26-	2003	253924	67035C	1FDXE45F33HB39285
1013	STARTRANS	08SENATOR22	SENATOR 22-	2008	297884	86758C	1FD4E45P58DA65510
1016	STARTRANS	09SENATOR24	SENATOR 24-	2009	245742	91631C	1FDFF45P49DA39507
1017	STARTRANS	09SENATOR24	SENATOR 24-	2009	255550	91640C	1FDFF45P69DA39508
1018	STARTRANS	09SENATOR24	SENATOR 24-	2009	279501	B3339C	1FDFF45P89DA39509
1019	STARTRANS	09SENATOR24	SENATOR 24-	2009	284854	91627C	1FDFF45P49DA39510
1020	STARTRANS	09SENATOR24	SENATOR 24-	2009	254377	91630C	1FDFF45P69DA39511
1021	STARTRANS	09SENATOR24	SENATOR 24-	2009	264573	91642C	1FDFF45P89DA39512
1022	STARTRANS	09SENATOR24	SENATOR 24-	2009	287441	C0900D	1FDFF45PX9DA39513
1023	STARTRANS	09SENATOR24	SENATOR 24-	2009	252789	B8716C	1FDFF45P19DA39514
1024	STARTRANS	09SENATOR24	SENATOR 24-	2009	272881	91628C	1FDFF45P39DA39515
1025	STARTRANS	09SENATOR24	SENATOR 24-	2009	282977	91629C	1FDFF45P59DA39516
1026	STARTRANS	09SENATOR27	SENATOR 27-	2009	150432	91632C	1FDFF45P79DA39503
1027	STARTRANS	09SENATOR27	SENATOR 27-	2009	208531	91626C	1FDFF45P99DA39504
1028	STARTRANS	09SENATOR27	SENATOR 27-	2009	188902	91638C	1FDFF45P09DA39505
1100	GOSHEN	CHEV2013	G-4500	2013	161348	A2728C	1GB6G5BL4D1127044
1101	GOSHEN	CHEV2013	G-4500	2013	180968	A2729C	1GB6G5BL2D1127346
1102	GOSHEN	CHEV2013	G-4500	2013	175726	A2730C	1GB6G5BL7D1125253
1103	GOSHEN	CHEV2013	G-4500	2013	186281	A3880C	1GB6G5BL7D1125351
1104	GOSHEN	CHEV2013	G-4500	2013	188499	A3881C	1GB6G5BLXD1125599
1105	GOSHEN	CHEV2013	G-4500	2013	175270	A3882C	1GB6G5BL2D1126228
1106	GOSHEN	CHEV2013	G-4500	2013	179824	A3883C	1GB6G5BLXD1126462
1107	GOSHEN	CHEV2013	G-4500	2013	168827	A3884C	1GB6G5BL7D1126743
1108	GOSHEN	CHEV2013	G-4500	2013	153203	A3885C	1GB6G5BL8D1126344
1109	GOSHEN	CHEV2013	G-4500	2013	150427	A3886C	1GB6G5BL9D1127389
1110	GOSHEN	CHEV2013	G-4500	2013	171729	A3887C	1GB6G5BL4D1130622
1111	STARTRANS	15SENATOR22	E-450P / SENATOR	2015	137419	C1890C	1FDFF4FS0FDA14487
1112	STARTRANS	15SENATOR22	E-450P / SENATOR	2015	124342	B0530C	1FDFF4FS2FDA14488
1113	STARTRANS	15SENATOR22	E-450P / SENATOR	2015	140523	A9359C	1FDFF4FS4FDA14489
1114	STARTRANS	15SENATOR22	E-450P / SENATOR	2015	129312	B0529C	1FDFF4FS0FDA14490
1115	STARTRANS	15SENATOR22	E-450P / SENATOR	2015	140490	B0528C	1FDFF4FS2FDA14491
1116	STARTRANS	16SENATOR22	E-450P	2016	119177	A5490C	1FDFF4FS9GDC03950
1117	STARTRANS	16SENATOR22	E-450P	2016	125417	B4417C	1FDFF4FS4GDC24317
1118	STARTRANS	16SENATOR22	E-450P	2016	126912	B4418C	1FDFF4FS8GDC24319
1119	STARTRANS	16SENATOR22	E-450P	2016	115244	B4419C	1FDFF4FS4GDC24320
1120	STARTRANS	16SENATOR22	E-450P	2016	123758	B4858C	1FDFF4FS5GDC26125
1121	STARTRANS	16SENATOR22	E-450P	2016	127386	B4857C	1FDFF4FS7GDC26126
1122	STARTRANS	16SENATOR22	E-450P	2016	124406	B4856C	1FDFF4FS9GDC26127
1123	STARTRANS	16SENATOR22	E-450P	2016	114940	A5491C	1FDFF4FS3GDC26124
1124	STARTRANS	17SENATOR22	E-450P	2017	91982	B7814C	1FDFF4FS1HDC01515
1125	STARTRANS	17SENATOR22	E-450P	2017	95683	B7815C	1FDFF4FS3HDC01516
1126	STARTRANS	17SENATOR22	E-450P	2017	97216	B7816C	1FDFF4FS6HDC01543
1127	STARTRANS	17SENATOR22	E-450P	2017	80905	B7817C	1FDFF4FS1HDC01546
1128	STARTRANS	17SENATOR22	E-450P	2017	99990	B7818C	1FDFF4FS3HDC01547
1129	STARTRANS	17SENATOR22	E-450P	2017	104786	B7819C	1FDFF4FS5HDC01548
1130	STARTRANS	17SENATOR22	E-450P	2017	93648	B6661C	1FDFF4FS3HDC01550
1131	STARTRANS	17SENATOR22	E-450P	2017	104300	B6662C	1FDFF4FS5HDC01551
1132	STARTRANS	17SENATOR22	E-450P	2017	94590	B6663C	1FDFF4FS9HDC01553
1133	STARTRANS	17SENATOR22	E-450P	2017	95702	B6664C	1FDFF4FS0HDC01554

1134	STARTRANS	17CANDIDATE	CANDIDATE II	2017	41726	C0254C	1FDES6PV0HKB26780
1135	STARTRANS	17CANDIDATE	CANDIDATE II	2017	71477	C0253C	1FDES6PV2HKB26781
1136	STARTRANS	17CANDIDATE	CANDIDATE II	2017	71335	C0252C	1FDES6PV4HKB26782
1137	STARTRANS	17CANDIDATE	CANDIDATE II	2017	63675	C0251C	1FDES6PV5HKB28315
1138	STARTRANS	17CANDIDATE	CANDIDATE II	2017	67106	B9739C	1FDES6PV7HKB28316
1139	STARTRANS	19SENATOR22	E-450P	2019	41795	C5138C	1FD4E4FS0JDC3715
1140	STARTRANS	19SENATOR22	E-450P	2019	46439	C5126C	1FD4E4FS2JDC37316
1141	STARTRANS	19SENATOR22	E-450P	2019	40112	C5127C	1FD4E4FS4JDC37317
1142	STARTRANS	19SENATOR22	E-450P	2019	47953	C5137C	1FD4E4FS4JDC37320
1143	STARTRANS	19SENATOR22	E-450P	2019	44403	C5134C	1FD4E4FS5JDC37312
1144	STARTRANS	19SENATOR22	E-450P	2019	46421	C5135C	1FD4E4FS6JDC37318
1145	STARTRANS	19SENATOR22	E-450P	2019	52685	C5128C	1FD4E4FS6JDC37321
1146	STARTRANS	19SENATOR22	E-450P	2019	55151	C5178C	1FD4E4FS7JDC37313
1147	STARTRANS	19SENATOR22	E-450P	2019	49227	C5129C	1FD4E4FS7KDC12414
1148	STARTRANS	19SENATOR22	E-450P	2019	45684	C5130C	1FD4E4FS8JDC37319
1149	STARTRANS	19SENATOR22	E-450P	2019	47179	C5131C	1FD4E4FS9JDC37314
1150	STARTRANS	19SENATOR22	E-450P	2019	46900	C5139C	1FD4E4FS9KDC12415
1151	STARTRANS	20SENATOR22	E-450P	2020	147	C2768D	1FD4E4FS9KDC69214
1152	STARTRANS	20SENATOR22	E-450P	2020	184	C2770D	1FD4E4FS8KDC71780
1153	STARTRANS	20SENATOR22	E-450P	2020	140	D0601C	1FD4E4FS2KDC71791
1154	STARTRANS	20SENATOR22	E-450P	2020	188	C2769D	1FD4E4FS4KDC71792
1155	STARTRANS	20SENATOR22	E-450P	2020	173	D0600C	1FD4E4FS8KDC71794
1156	STARTRANS	20SENATOR22	E-450P	2020	3106	D0602C	1FD4E4FS8KDC69205
2000	VANPOOL	10TOYSIENNA	SIENNA	2010	102663	RSO8104	5TDKK4CC0AS302676
2001	VANPOOL	10TOYSIENNA	SIENNA	2010	79516	RSO8105	5TDKK4CC5AS303127
2002	VANPOOL	10TOYSIENNA	SIENNA	2010	91973	RSO8106	5TDKK4CC3AS303174
2003	VANPOOL	10TOYSIENNA	SIENNA	2010	105597	RSO8107	5TDKK4CC6AS303282
2004	VANPOOL	10TOYSIENNA	SIENNA	2010	93171	RSO8108	5TDKK4CC3AS303353
2005	VANPOOL	10TOYSIENNA	SIENNA	2010	111664	RSO8109	5TDKK4CC5AS303404
2006	VANPOOL	10TOYSIENNA	SIENNA	2010	83333	RSO8099	5TDKK4CC3AS302820
2007	VANPOOL	10TOYSIENNA	SIENNA	2010	85703	RSO8098	5TDKK4CCXAS302992
2008	VANPOOL	10TOYSIENNA	SIENNA	2010	84525	RSO8100	5TDKK4CC7AS303114
2009	VANPOOL	10TOYSIENNA	SIENNA	2010	68194	RSO8101	5TDKK4CC8AS303316
2010	VANPOOL	10TOYSIENNA	SIENNA	2010	81716	RSO8102	5TDKK4CC6AS303573
2011	VANPOOL	10TOYSIENNA	SIENNA	2010	118839	RSO8103	5TDKK4CC2AS303697
2012	VANPOOL	10TOYSIENNA	SIENNA	2010	135504	RSO8097	5TDKK4CC0AS303522
2013	VANPOOL	10TOYSIENNA	SIENNA	2010	166601	RSO8096	5TDKK4CC9AS302983
2014	VANPOOL	10TOYSIENNA	SIENNA	2010	113640	RSO8095	5TDKK4CC9AS303535
2015	VANPOOL	10TOYSIENNA	SIENNA	2010	113940	RSO8094	5TDKK4CC6AS303671
2016	VANPOOL	10TOYSIENNA	SIENNA	2010	97598	RSO8093	5TDKK4CC1AS303772
2017	VANPOOL	10TOYSIENNA	SIENNA	2010	104061	RSO8110	5TDKK4CC7AS303811
2018	VANPOOL	10TOYSIENNA	SIENNA	2010	84543	RSO8140	5TDKK4CC7AS304053
2019	VANPOOL	10TOYSIENNA	SIENNA	2010	110727	RSO8139	5TDKK4CC5AS304231
2020	VANPOOL	10TOYSIENNA	SIENNA	2010	88698	RSO8138	5TDKK4CCXAS304242
2021	VANPOOL	10TOYSIENNA	SIENNA	2010	134003	RSO8137	5TDKK4CC9AS304250
2022	VANPOOL	10TOYSIENNA	SIENNA	2010	64058	RSO8136	5TDKK4CC4AS304270
2023	VANPOOL	10TOYSIENNA	SIENNA	2010	113104	RSO8135	5TDKK4CC0AS304279
2024	VANPOOL	10TOYSIENNA	SIENNA	2010	70341	RSO8141	5TDKK4CC1AS301410
2025	VANPOOL	10TOYSIENNA	SIENNA	2010	108736	RSO8142	5TDKK4CC8AS301372
2026	VANPOOL	10TOYSIENNA	SIENNA	2010	104689	RSO8143	5TDKK4CC0AS301558
2027	VANPOOL	10TOYSIENNA	SIENNA	2010	80316	RSO8144	5TDKK4CC9AS301722
2028	VANPOOL	10TOYSIENNA	SIENNA	2010	66342	RSO8145	5TDKK4CC2AS304185
2029	VANPOOL	10TOYSIENNA	SIENNA	2010	53348	RSO8146	5TDKK4CC7AS301363
2030	VANPOOL	10TOYSIENNA	SIENNA	2010	89221	RSO8129	5TDKK4CC2AS301934
2031	VANPOOL	10TOYSIENNA	SIENNA	2010	95753	RSO8130	5TDKK4CC6AS302200
2032	VANPOOL	10TOYSIENNA	SIENNA	2010	102244	RSO8131	5TDKK4CC8AS301419
2033	VANPOOL	10TOYSIENNA	SIENNA	2010	90738	RSO8132	5TDKK4CCXAS302460
2034	VANPOOL	10TOYSIENNA	SIENNA	2010	85982	RSO8133	5TDKK4CC5AS301622
2035	VANPOOL	10TOYSIENNA	SIENNA	2010	108341	RSO8134	5TDKK4CC2AS301707
2036	VANPOOL	10TOYSIENNA	SIENNA	2010	116385	RSO8149	5TDKK4CCXAS301440
2037	VANPOOL	10TOYSIENNA	SIENNA	2010	82966	RSO8150	5TDKK4CC2AS302470
2038	VANPOOL	10TOYSIENNA	SIENNA	2010	121749	RSO8151	5TDKK4CC5AS302706
2039	VANPOOL	10TOYSIENNA	SIENNA	2010	104856	RSO8152	5TDKK4CC7AS302626
2040	VANPOOL	10TOYSIENNA	SIENNA	2010	72585	RSO8153	5TDKK4CC5AS301989
2041	VANPOOL	10TOYSIENNA	SIENNA	2010	89900	RSO8154	5TDKK4CC6AS301998
2042	VANPOOL	10TOYSIENNA	SIENNA	2010	101494	RSO8155	5TDKK4CC8AS301971
2044	VANPOOL	10TOYSIENNA	SIENNA	2010	116666	RSO8157	5TDKK4CC3AS302686
2045	VANPOOL	10TOYSIENNA	SIENNA	2010	154280	RSO8158	5TDKK4CC8AS302747
2046	VANPOOL	17TOYSIENNA	SIENNA	2017	13639	RS12496	5TDZZ3DC7HS854916
2047	VANPOOL	17TOYSIENNA	SIENNA	2017	14635	RS12495	5TDZZ3DC7HS851501
2048	VANPOOL	17TOYSIENNA	SIENNA	2017	19238	RS12494	5TDZZ3DC7HS855175
2049	VANPOOL	15DODGE	GRAND CARAVAN	2015	15691	RS12653	2CRDGBG9FR66047
2050	VANPOOL	18TOYSIENNA	SIENNA	2018	9358	RS13193	5TDZZ3DC1JS960476
2051	VANPOOL	18TOYSIENNA	SIENNA	2018	12577	RS13194	5TDZZ3DC0JS960596
2052	VANPOOL	18TOYSIENNA	SIENNA	2018	15669	RS13195	5TDZZ3DC9JS961536
2053	VANPOOL	18TOYSIENNA	SIENNA	2018	22538	RS13196	5TDZZ3DC0JS961621
2054	VANPOOL	18TOYSIENNA	SIENNA	2018	11317	RS13197	5TDZZ3DC4JS961962
2055	VANPOOL	18TOYSIENNA	SIENNA	2018	10105	RS13198	5TDZZDC0JS961232

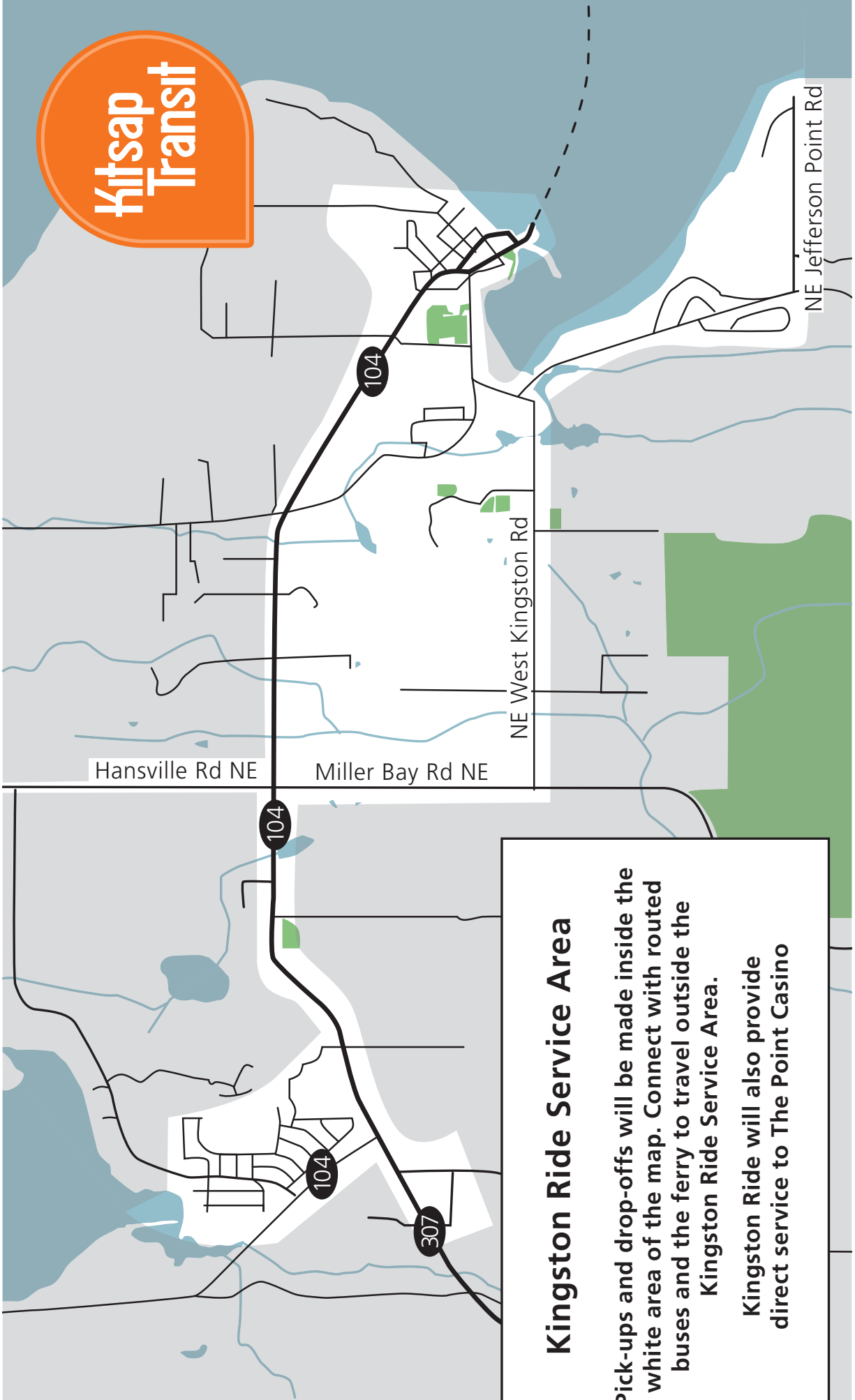
2056	VANPOOL	18TOYSIENNA	SIENNA	2018	34749	RS13199	5TDZZ3DC7JS961194
2057	VANPOOL	18TOYSIENNA	SIENNA	2018	9440	RS13200	5TDZZ3DC7JS962202
2058	VANPOOL	18TOYSIENNA	SIENNA	2018	3683	RS13201	5TDZZ3DC7JS962782
2059	VANPOOL	18TOYSIENNA	SIENNA	2018	5288	RS13202	5TDZZ3DC1JS962325
2060	VANPOOL	18TOYSIENNA	SIENNA	2018	4439	RS13203	5TDZZ3DC5JS962666
2100	E350	09E350STRCH	ECONOLINE 350 STRETCH	2009	87458	RSO8165	1FDSS31L59DA86680
2101	E350	09E350STRCH	ECONOLINE 350 STRETCH	2009	90532	RSO8166	1FDSS31L09DA86683
2102	E350	09E350STRCH	ECONOLINE 350 STRETCH	2009	130137	RSO8164	1FDSS31L99DA86679
2103	E350	09E350STRCH	ECONOLINE 350 STRETCH	2009	95138	RSO8163	1FDSS31L79DA86681
2104	E350	09E350STRCH	ECONOLINE 350 STRETCH	2009	137574	RSO8167	1FDSS31LX9DA86688
2105	E350	09E350STRCH	ECONOLINE 350 STRETCH	2009	109974	RSO8173	1FDSS31L59DA86677
2106	E350	09E350STRCH	ECONOLINE 350 STRETCH	2009	158931	RSO8176	1FDSS31L89DA86687
2107	E350	09E350STRCH	ECONOLINE 350 STRETCH	2009	98224	RSO8180	1FDSS31L69DA86686
2108	E350	09E350STRCH	ECONOLINE 350 STRETCH	2009	71552	RSO8177	1FDSS31L89DA86690
2109	E350	09E350STRCH	ECONOLINE 350 STRETCH	2009	23814	RSO8175	1FDSS31629DA86684
2110	E350	09E350STRCH	ECONOLINE 350 STRETCH	2009	85346	RSO8184	1FDSS31L79DA86678
2111	E350	09E350STRCH	ECONOLINE 350 STRETCH	2009	81929	RSO8183	1FDSS31L39DA86678
2112	E350	09E350STRCH	ECONOLINE 350 STRETCH	2009	167061	RSO8191	1FDSS31L39DA86693
2113	E350	09E350STRCH	ECONOLINE 350 STRETCH	2009	77475	RSO8188	1FDSS31659DA86694
2114	E350	09E350STRCH	ECONOLINE 350 STRETCH	2009	95315	RSO8189	1FDSS31L49DA86685
2115	E350	09E350STRCH	ECONOLINE 350 STRETCH	2009	95044	RSO8190	1FDSS31LX9DA86691
2116	E350	09E350STRCH	ECONOLINE 350 STRETCH	2009	72384	RSO8194	1FDSS31L19DA86692
2117	E350	09E350STRCH	ECONOLINE 350 STRETCH	2009	81642	RSO8193	1FDSS31L19DA86689
2118	E350	09E350STRCH	ECONOLINE 350 STRETCH	2009	122616	RSO8217	1FDSS31L99DA86682
2119	E350	09E35018	ECONOLINE 350 18-	2009	165094	RSO8187	1FDNE31L39DA86665
2120	E350	09E35018	ECONOLINE 350 18-	2009	83397	RSO8185	1FDNE31L19DA86664
2122	E350	09E35018	ECONOLINE 350 18-	2009	83400	RSO8178	1FDNE31L99DA86668
2123	E350	09E35018	ECONOLINE 350 18-	2009	82192	RSO8179	1FDNE31L79DA86667
2124	E350	09E35018	ECONOLINE 350 18-	2009	99788	RSO8174	1FDNE31L69DA86675
2125	E350	09E35018	ECONOLINE 350 18-	2009	120068	RSO8169	1FDNE31L09DA86669
2126	E350	09E35018	ECONOLINE 350 18-	2009	69069	RSO8168	1FDNE31L09DA86672
2127	E350	09E35018	ECONOLINE 350 18-	2009	70337	RSO8171	1FDNE31L29DA86673
2128	E350	09E35018	ECONOLINE 350 18-	2009	97248	RSO8170	1FDNE31L59DA86666
2129	E350	09E35018	ECONOLINE 350 18-	2009	90137	RSO8161	1FDNE31L99DA86671
2130	E350	09E35018	ECONOLINE 350 18-	2009	84413	RSO8162	1FDNE31L49DA86674
2131	E350	13E35020	E350 / Raised Roof	2013	87031	RS10582	1FTDS3EL8DDB34849
2132	E350	13E35018	E350 / RAISED ROOF	2013	12899	RS10583	1FTDE3EL4DDB34662
2133	E350	13E35018	E350 / RAISED ROOF	2013	32328	RS10584	1FTDE3EL6DDB34663
2134	E350	13E35018	E350 / RAISED ROOF	2013	56871	RS10585	1FTDE3EL8DDB34664
2135	E350	13E35018	E350 / RAISED ROOF	2013	18933	RS10586	1FTDE3ELXDD34665
2136	E350	13E35018	E350 / RAISED ROOF	2013	17162	RS10587	1FTDE3EL1DDB34666
2137	E350	13E35018	E350 / RAISED ROOF	2013	7211	RS10588	1FTDE3EL3DDB34667
2138	E350	13E35018	E350 / RAISED ROOF	2013	13085	RS10589	1FTDE3EL5DDB34668
2139	T350	TRANSIT VAN	TRANSIT / T-350	2016	47711	RS11713	1FBAX2CV1GKA54543
2140	T350	TRANSIT VAN	TRANSIT / T350	2016	65585	RS11714	1FBAX2CV3GKA54544
2141	T350	TRANSIT VAN	TRANSIT / T350	2016	65835	RS11715	1FBAX2CV5GKA54545
2142	T350	TRANSIT VAN	TRANSIT	2016	77635	RS11709	1FBAX2CV7GKA54546
2143	T350	TRANSIT VAN	TRANSIT	2016	35857	RS11710	1FBAX2CV9GKA54547
2144	T350	TRANSIT VAN	TRANSIT / T350	2016	21904	RS11711	1FBAX2CV0GKA54548
2145	T350	TRANSIT VAN	TRANSIT / T350	2016	29002	RS11712	1FBAX2CV2GKA54549
2146	CONNECT	16CONNECT-G	TRANSIT CONNECT / XLT	2016	21276	RS11793	NM0GE9F70G1280657
2147	CONNECT	16CONNECT-G	TRANSIT CONNECT / XLT	2016	32534	RS11794	NM0GE9F72G1280658
2148	CONNECT	16CONNECT-G	TRANSIT CONNECT XLT	2016	35418	RS11796	NM0GE9F75G1280654
2149	CONNECT	16CONNECT-G	TRANSIT CONNECT XLT	2016	17038	RS11797	NM0GE9F74G1280662
2150	CONNECT	16CONNECT-G	TRANSIT CONNECT XLT	2016	23398	B4873C	NM0GE9F71G1280666
3500	GILLIG-LF	2019GIL35FT	35' LOW FLOOR	2019	49787	C5175C	15GGB2717K3191848
3501	GILLIG-LF	2019GIL35FT	35' LOW FLOOR	2019	58973	C5189C	15GGB2719K3191849
3502	GILLIG-LF	2019GIL35FT	35' LOW FLOOR	2019	50020	C8352C	15GGB2715K319850
3503	GILLIG-LF	2019GIL35FT	35' LOW FLOOR	2019	52748	C8353C	15GGB2717K3191851
3504	GILLIG-LF	2019GIL35FT	35' LOW FLOOR	2019	48084	C8354C	15GGB2719K3191852
3505	GILLIG-LF	2019GIL35FT	35' LOW FLOOR	2019	43619	C8355C	15GGB2710K3191853
3506	GILLIG-LF	2019GIL35FT	35' LOW FLOOR	2019	46376	C8356C	15GGB2712K3191854
3507	GILLIG-LF	2019GIL35FT	35' LOW FLOOR	2019	44593	C8357C	15GGB2714K3191855
3508	GILLIG-LF	2019GIL35FT	35' LOW FLOOR	2019	45288	C5176C	15GGB2716K3191856
3509	GILLIG-LF	2019GIL35FT	35' LOW FLOOR	2019	38262	C8376C	15GGB2719K3194881
3510	GILLIG-LF	2019GIL35FT	35' LOW FLOOR	2019	46169	C8377C	15GGB2710K3194882
3511	GILLIG-LF	2019GIL35FT	35' LOW FLOOR	2019	34839	C8378C	15GGB2712K3194883
3512	GILLIG-LF	2019GIL35FT	35' LOW FLOOR	2019	34610	C8379C	15GGB2714K3194884
3513	GILLIG-LF	2019GIL35FT	35' LOW FLOOR	2019	33292	C8380C	15GGB2716K3194885
3514	GILLIG-LF	2019GIL35FT	35' LOW FLOOR	2019	40407	C8381C	15GGB2718K3194886
3515	GILLIG-LF	2019GIL35FT	35' LOW FLOOR	2019	38754	C8382C	15GGB271XK3194887
4001	GILLIG-LF	2020GIL40FT	40' LOW FLOOR	2020	903	D0604C	15GGD2719L3195752
4002	GILLIG-LF	2020GIL40FT	40' LOW FLOOR	2020	841	D0481C	15GGD2710L3195753
4003	GILLIG-LF	2020GIL40FT	40' LOW FLOOR	2020	884	D0482C	15GGD2712L3195754
4004	GILLIG-LF	2020GIL40FT	40' LOW FLOOR	2020	884	D0483C	15GGD2714L3195755
4005	GILLIG-LF	2020GIL40FT	40' LOW FLOOR	2020	882	D0484C	15GGD2716L3195756
6000	MCI	1994-MCI	102 D3	1994	379623	97224C	1M8SDMTA5RPO46289
6001	MCI	1994-MCI	102 D3	1994	185424	97222C	1M8SDMTAXRP046658

6002	MCI	1994-MCI	102 D3	1994	860546	97218C	1M8SDMTA4RP046669
6003	MCI	1994-MCI	102 D3	1994	84972	97220C	1M8SDMTA2RP046699
6004	MCI	1994-MCI	102 D3	1994	317899	97688C	1M8SDMTA5RP046731
6005	MCI	1994-MCI	102 D3	1994	852114	97225C	1M8SDMTA9RP046733
6006	MCI	1994-MCI	102 D3	1994	497130	97217C	1M8SDMTAXRP046756
6007	MCI	1994-MCI	102 D3	1994	156505	97221C	1M8SDMTA0RP046782
6008	MCI	1994-MCI	102 D3	1994	892183	97671C	1M8SDMTA1RP046788
6009	MCI	1995-MCI	102 D3	1995	611272	97236C	1M8SDMTA0SP047081
6010	MCI	1995-MCI	102 D3	1995	754306	97235C	1M8SDMTA2SP047115
6011	MCI	1995-MCI	102 D3	1995	937299	97234C	1M8SDMTA6SP047120
6012	MCI	1995-MCI	102 D3	1995	262346	97223C	1M8SDMTA9SP047127
6013	MCI	1995-MCI	102 D3	1995	135290	97219C	1M8SDMTA9SP047130
6014	MCI	1995-MCI	102 D3	1995	301711	97684C	1M8SDMTA6SP047134
6015	MCI	1995-MCI	102 D3	1995	436322	97672C	1M8SDMTA9SP047337
6016	MCI	1995-MCI	102 D3	1995	889112	97675C	1M8SDMTA8SP047748
6017	MCI	1995-MCI	102 D3	1995	843194	97681C	1M8SDMTA8SP047751
6018	MCI	1996-MCI	102 D3	1996	293880	97677C	1M8SDMTA0TP048183
6019	MCI	1996-MCI	102 D3	1996	845032	97680C	1M8SDMTA3TP048310
6020	MCI	1996-MCI	102 D3	1996	343756	97237C	1M8SDMTA9TP048702
6021	MCI	1996-MCI	102 D3	1996	799381	97687C	1M8SDMTA4TP048705
6022	MCI	1996-MCI	102 D3	1996	162766	97683C	1M8SDMTAXTP048708
6023	MCI	1996-MCI	102 D3 / Series 60 Engine	1996	857869	97685C	1M8SDMTA5TP048714
6024	MCI	1997-MCI	102 D3	1997	224277	97682C	1M8SDMTAXVP049764
6025	MCI	1997-MCI	102 D3	1997	248166	97676C	1M8SDMTA0VP049787
6026	MCI	1997-MCI	102 D3	1997	835241	97673C	1M8SDMTA2VP049810
6027	MCI	1997-MCI	102 D3	1997	220713	97674C	1M8SDMTA4VP049811
6028	MCI	1997-MCI	102 D3	1997	594932	A0485C	1M8SDMPA4VP049706
6029	MCI	1997-MCI	102 D3	1997	733142	A0487C	1M8SDMPA8VP049708
6030	MCI	1998-MCI	102 D3	1998	565435	A0482C	1M8SDMTA0WP050505
6031	MCI	1998-MCI	102 D3	1998	518467	98855C	1M8SDMTA2WP050506
6032	MCI	1999-MCI	102 D3	1999	477489	A0481C	1M8SDMTA9XP051590
6033	MCI	1999-MCI	102 D3	1999	611078	A0483C	1M8SDMTA1XP052331
6034	MCI	2001-MCI	102 D3	2001	385119	A0486C	1M8SDMPA41P053748
6035	MCI	2001-MCI	102 D3	2001	476207	A0484C	1M8SDMPA21P053750
6040	MCI	1999-MCI	102 D3	1999	620226	B0535C	1M8SDMTA4XP051996
6041	MCI	2002-MCI	D4000	2002	209308	B0534C	1M8SDMPA72P054409
6042	MCI	2002-MCI	D4000	2002	647042	B0536C	1M8SDMPA12P054406
6043	MCI	2001-MCI	D4000	2001	665943	B6635C	1M8SDMPAX1P054211
6044	MCI	2001-MCI	D4000	2001	733041	B6634C	1M8SDMPA11P054212
6045	MCI	2001-MCI	D4000	2001	711523	B6636C	1M8SDMPA51P054214
7012	ARBOC	2010ARBOC	ARBOC / LOW FLOOR	2010	377622	95028C	1GB9G5A60A1106242
7014	ARBOC	2010ARBOC	ARBOC / LOW FLOOR	2010	292799	95589C	1GB9G5A65A1105376
7016	ARBOC	2010ARBOC	ARBOC / LOW FLOOR	2010	326311	95035C	1GB9G5A61A1123261
7017	ARBOC	2012ARBOC	ARBOC / LOW FLOOR	2012	290845	98832C	1GB6G5BL7C1114929
7019	ARBOC	2012ARBOC	ARBOC / LOW FLOOR	2012	272136	98834C	1GB6G5BL0C1114738
7022	ARBOC	2012ARBOC	ARBOC / LOW FLOOR	2012	260209	98845C	1GB6G5BL9C1115712
CARL2	FERRY	CARLISLEII	FERRY	1917	37375		CARLISLE II 214872
FINEST	FERRY	MV FINEST		1996	0		
LADYSWIFT	FERRY	LADYSWIFT		2019	0		
PETE	FERRY	FB ADMIRAL	FERRY	1994	24754		ADMIRAL PETE
RELANCE	FERRY	RELANCE		2019	0		
RP1	FERRY	RP1	FERRY	2012	2934		RICH PASSAGE 1
WATERMAN	FERRY	WATERMAN		2019	0		

Appendix IV: SK Ride Service Area Map



Appendix V: Kingston Ride Service Area Map



Kingston Ride Service Area

Pick-ups and drop-offs will be made inside the white area of the map. Connect with routed buses and the ferry to travel outside the Kingston Ride Service Area.

Kingston Ride will also provide direct service to The Point Casino

Appendix VI: Kingston Fast Ferry Commuter Service Area Map

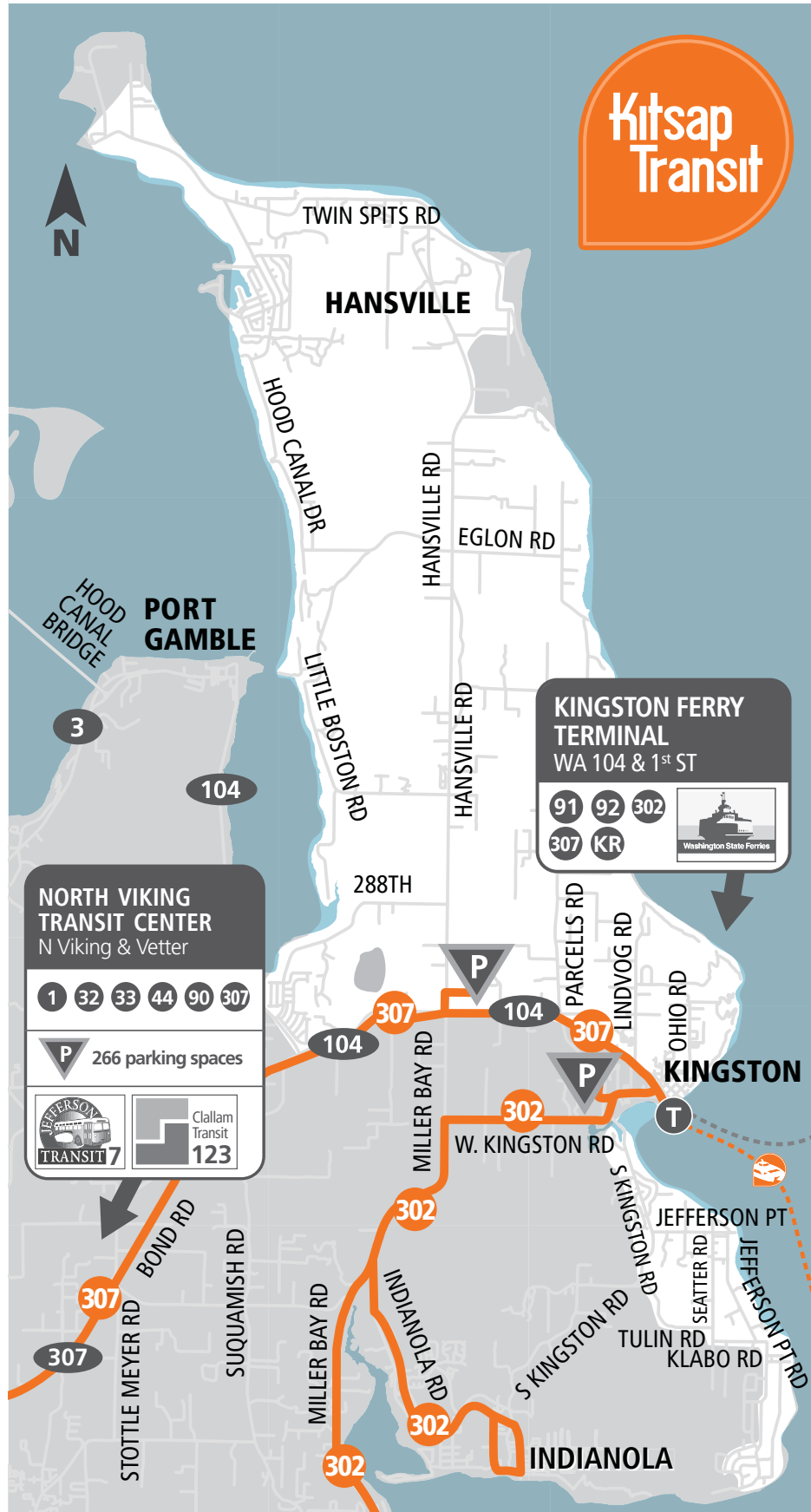
KEY



Fixed Routed Bus Service

Kingston Ride Commuter
Bus Service Area

Park & Ride: George's Corner
and Bayside Community Church



Appendix VII: Southworth Fast Ferry Ride Service Area

KEY



Fixed Routed Bus Service



Southworth Dial-A-Ride
Commuter Bus Service Area



Park & Rides

