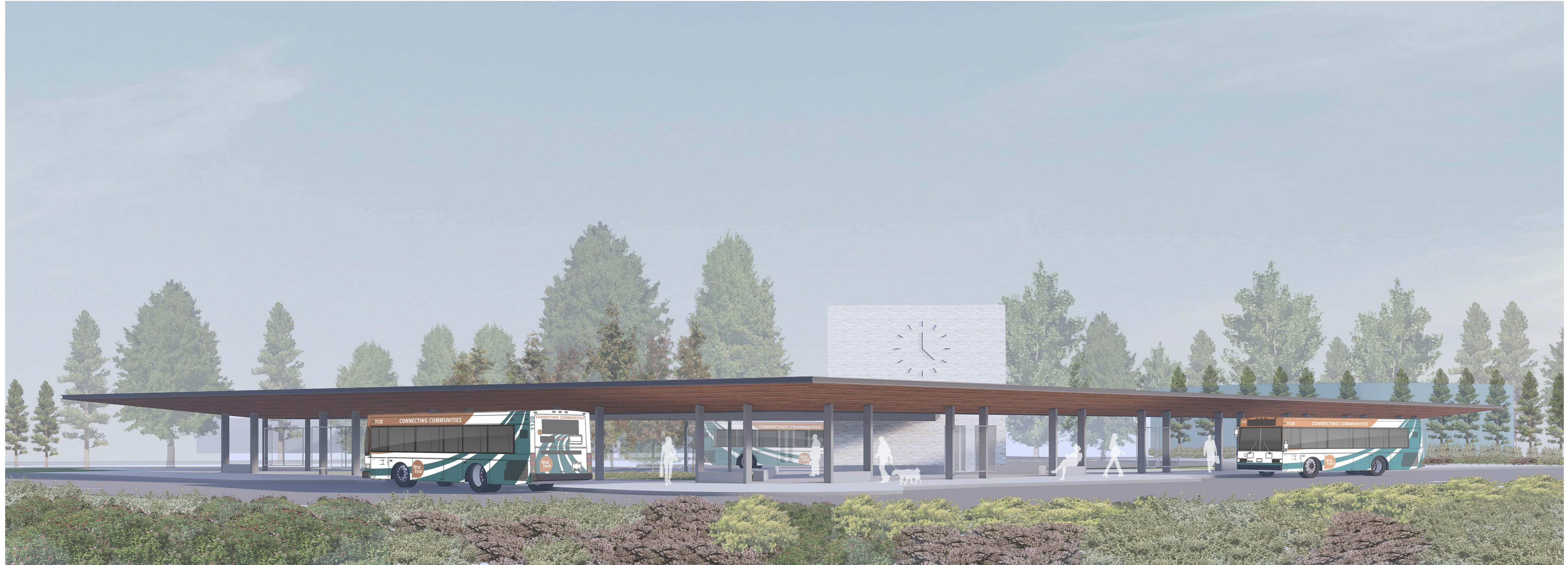


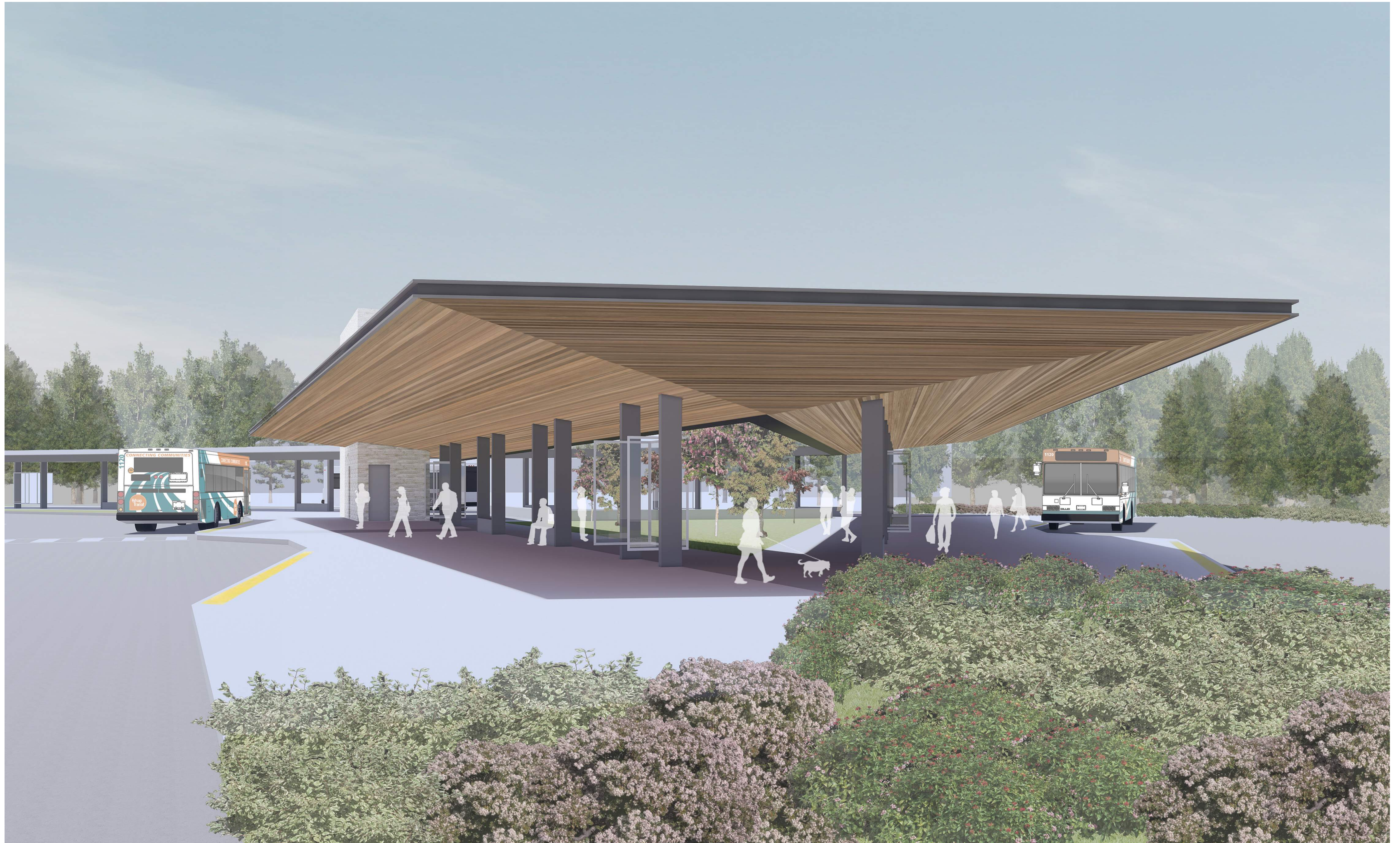
SILVERDALE TRANSIT CENTER **AERIAL VIEW**



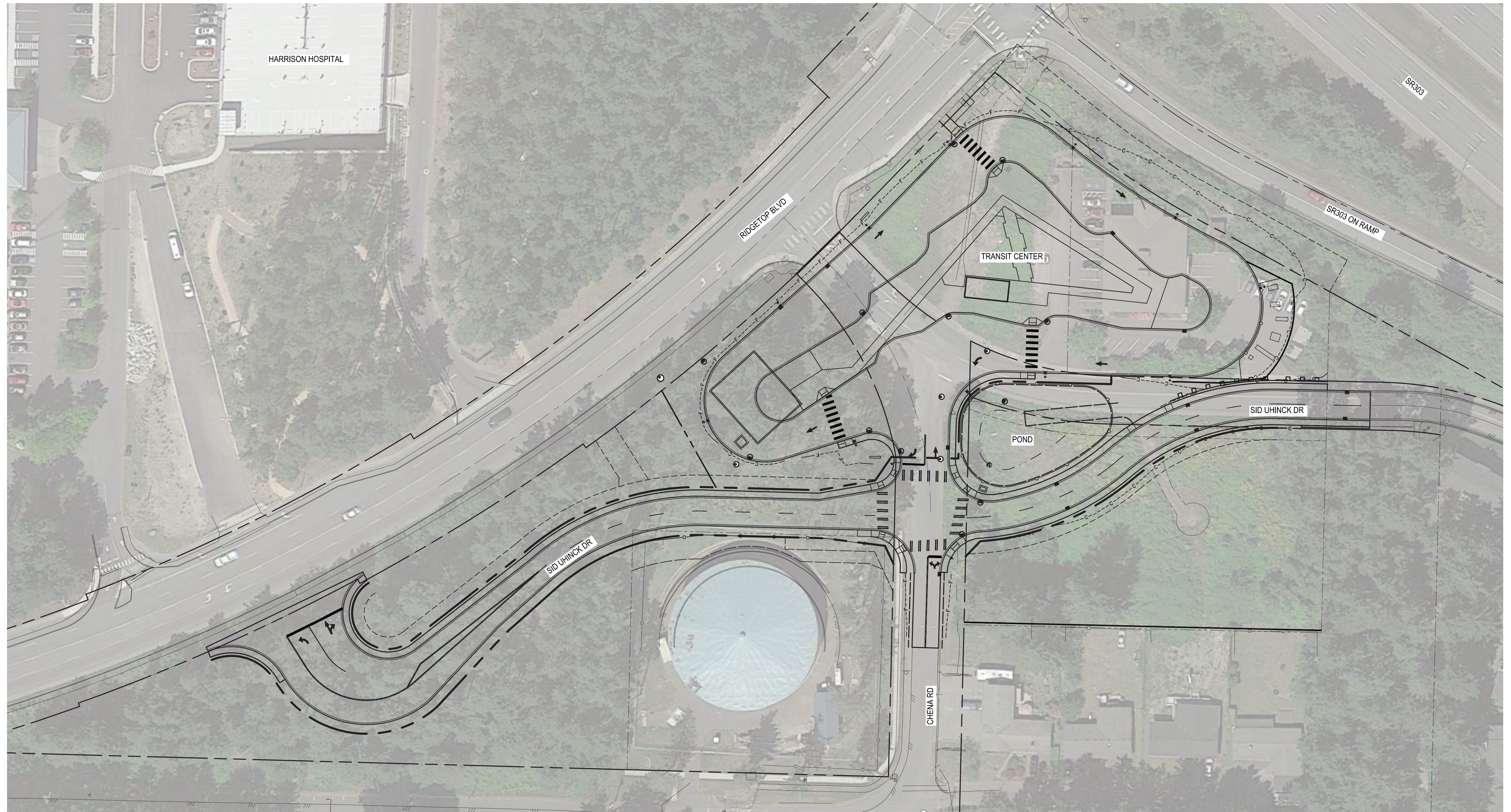
SILVERDALE TRANSIT CENTER **PERSPECTIVE VIEW OF TRANSIT CENTER TO THE SOUTH**
– From intersection of NE Waaga Way and Ridgetop Boulevard



SILVERDALE TRANSIT CENTER **PERSPECTIVE VIEW OF TRANSIT** – Northwest towards hospital



SILVERDALE TRANSIT CENTER OVERVIEW



SILVERDALE TRANSIT CENTER LIGHTING CONCEPT



CANOPY AS BEACON

The natural wood canopy emits a sense of warmth and welcome to the station structure. This continuous ribbon is highlighted after dark with an even wash of light from up lights, creating a beacon for travelers.



LINEAR FIXTURES WITHIN CANOPY

Linear fixtures fit within the modulation of the wood ceiling to illuminate the walking surface below. The staggered layout evokes a sense of ordered movement. Shorter strips at each bus bay provide accent lighting for the bus bay signage.



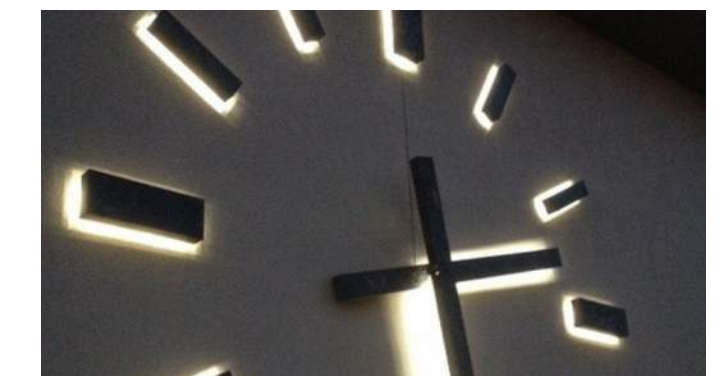
PEDESTRIAN PATH

Bollard and pole fixtures illuminate pedestrian walkway areas outside of the canopy.



CLOCK FACE

The large clock face on the upper north wall of the comfort station is minimally illuminated by LEDs behind each hand and number marker.



DRIVE LANE / BUS CIRCULATION AREA

Simple pole mounted flood lights provide illuminating along the outside perimeter of the bus drive lane. The fixtures are doubled up at the crosswalks for an increased level of lighting for pedestrians.



KIOSK / TRANSACTION MACHINES

Light fixtures within the kiosk assembly illuminate the translucent information panels at eye level.



SILVERDALE TRANSIT CENTER NEIGHBORHOOD SCREENING WALL CONCEPT

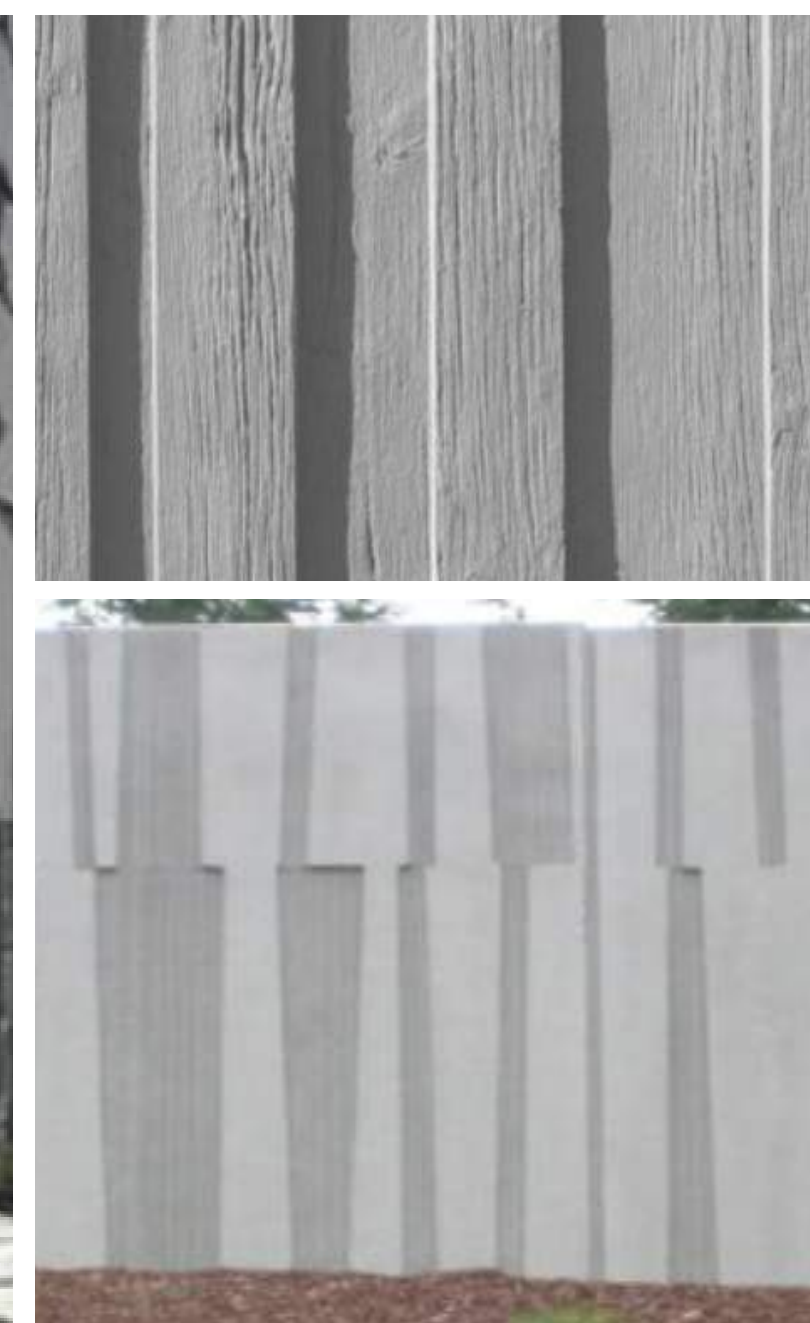
CONTEXT VIEWS



SCREENING WALL OPTIONS



CONCRETE WALL
options: nature depictions, board form, or abstract pattern



GABION WALL

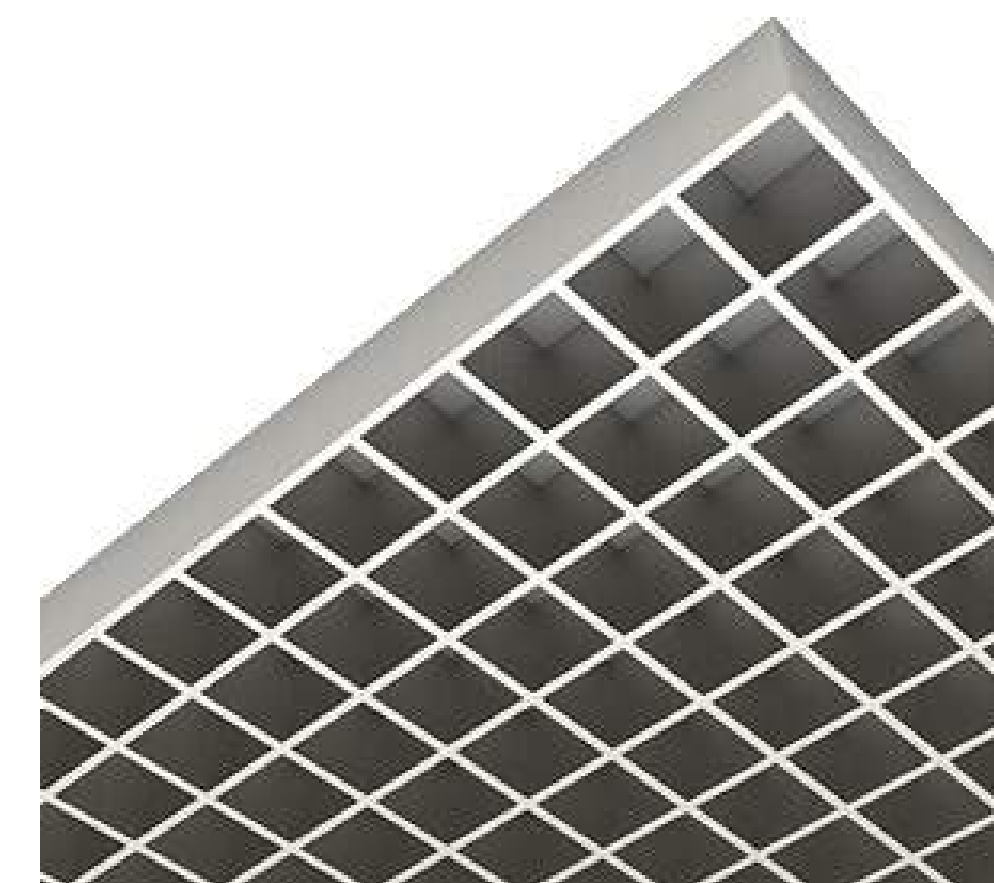


PLANTED / GREEN WALL
requires maintenance



WOOD FENCE
visual only | match generator screening

SILVERDALE TRANSIT CENTER EXTERIOR MATERIALS CONCEPT



FIBERGLASS GRATE
lid + bird deterrent at top of comfort station



STOREFRONT + FROSTED GLAZING
driver comfort station entry



BOARD FORM CONCRETE
vertical comfort station volume
with graffiti coating

STANDING SEAM METAL
canopy roofing



WOOD-LOOK PLANKING
canopy soffit + seating accents



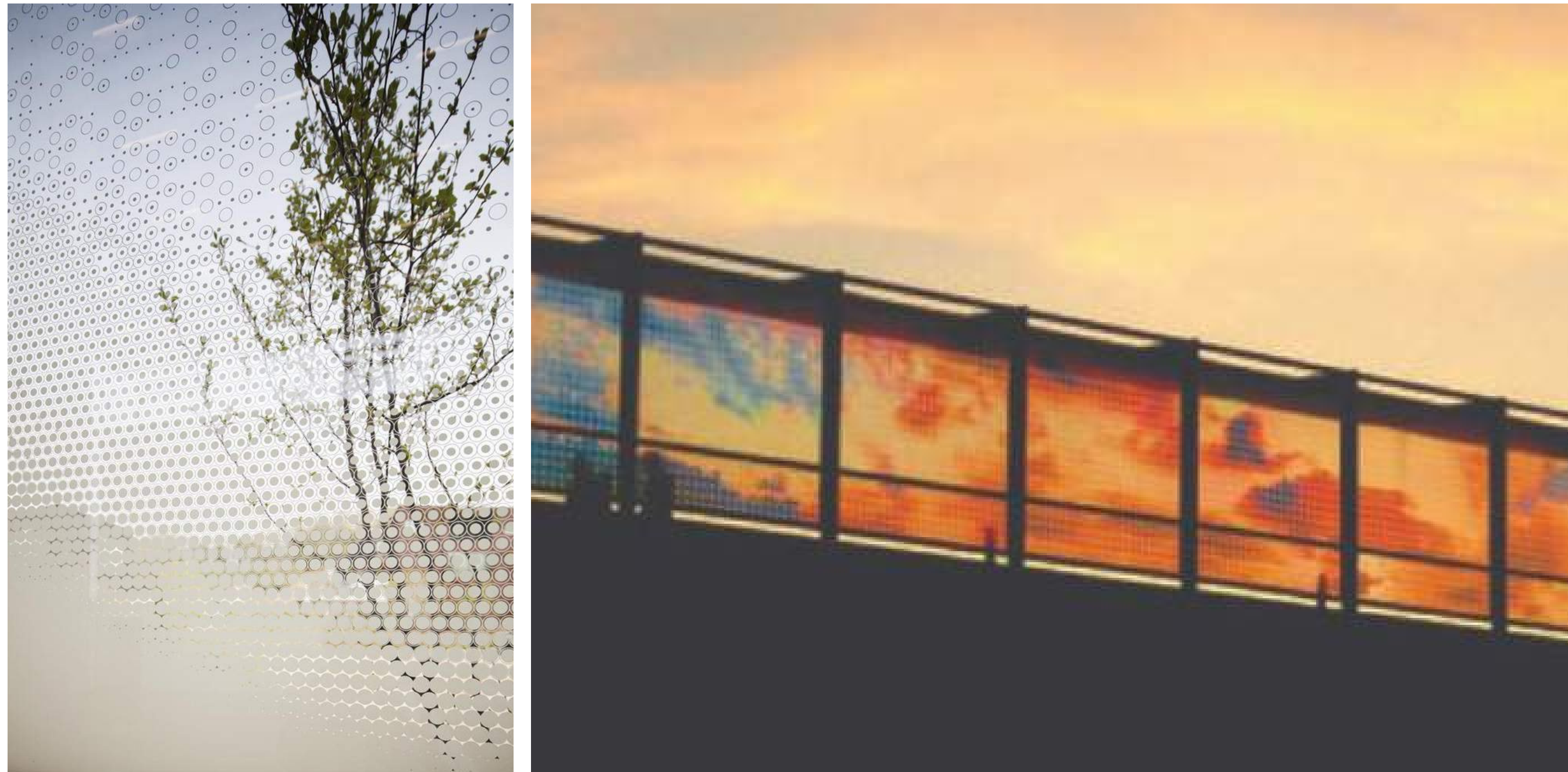
ORANGE ACCENTS
throughout architectural,
site, & landscape elements

STEEL COLUMNS
painted | graffiti coating



RAIN CHAIN
rainwater diverted to landscape

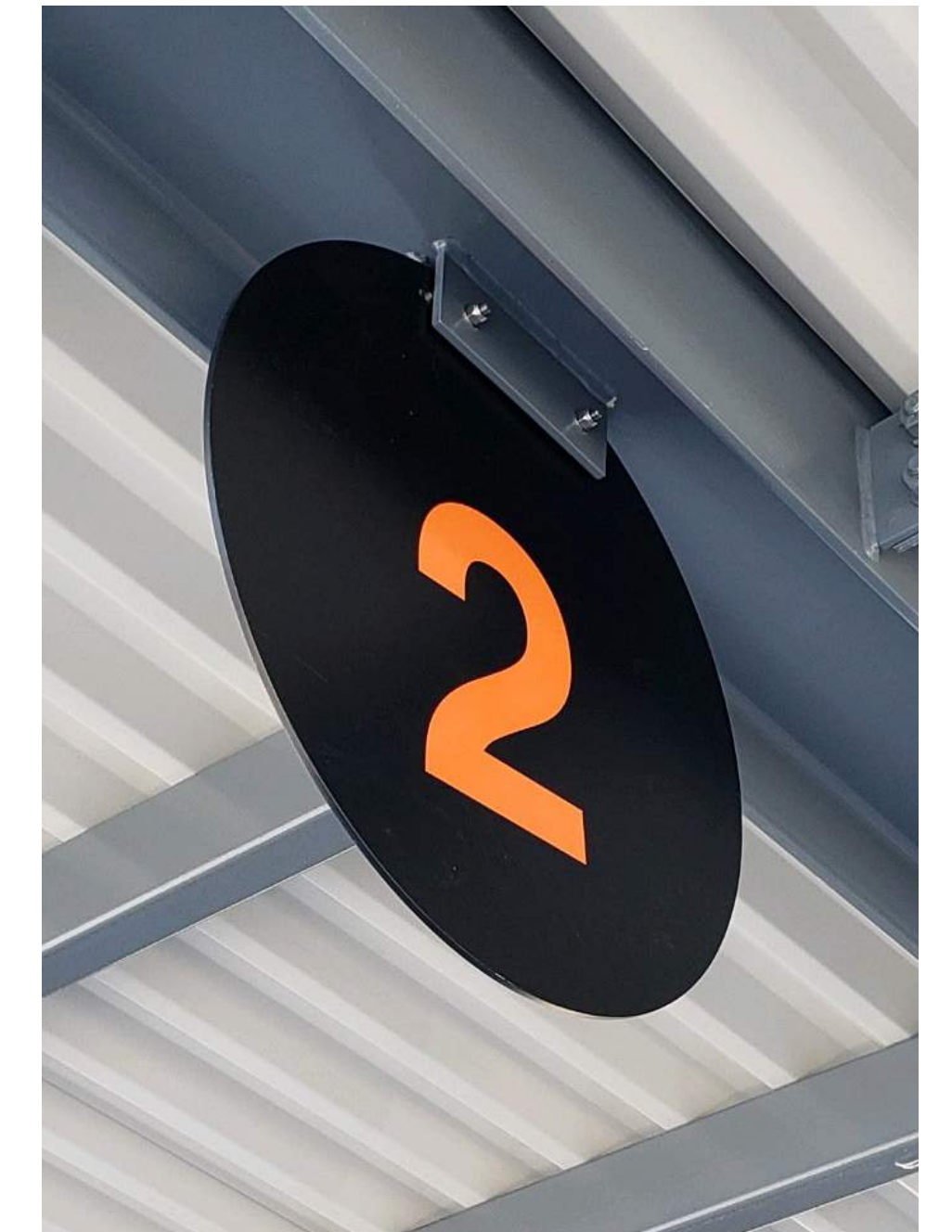
SILVERDALE TRANSIT CENTER **SITE ELEMENTS CONCEPT**



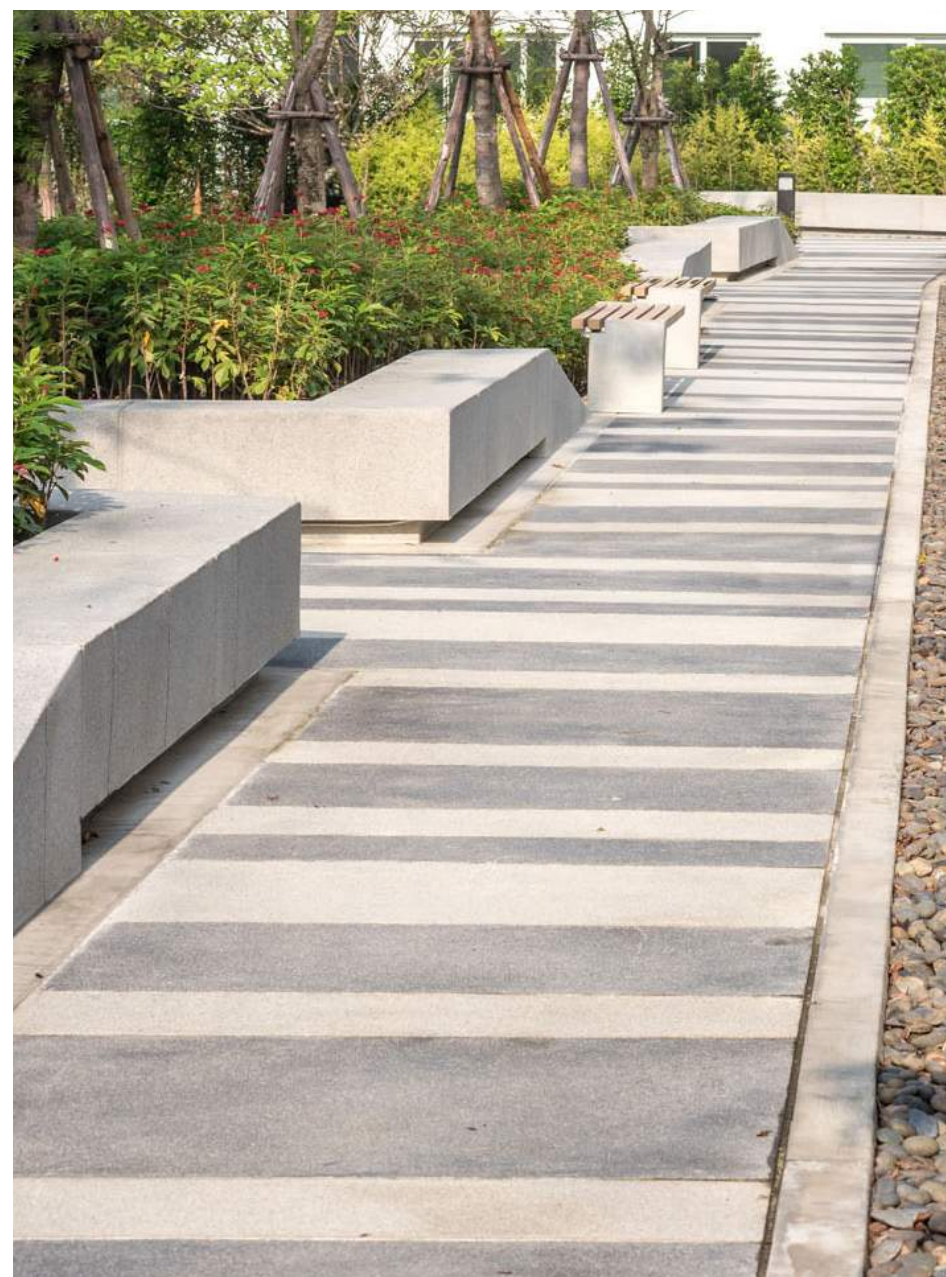
WIND SCREEN
tempered glass | laminated photographic inlay or frit pattern | opportunity for a hint of orange | bump guard



BENCH
concrete base | wood-look seats | arm rests
integrated with steel column base



BUS BAY NUMBER SIGNAGE
hanging round blade signs under canopy



PLAZA SURFACE
scored concrete with differentiating tints for plaza + walkways



WASTE RECEPTACLES
sturdy



BICYCLE RACK
orange rack with Kitsap Transit logo



LEAN RAIL
metal | integrated with wind screen

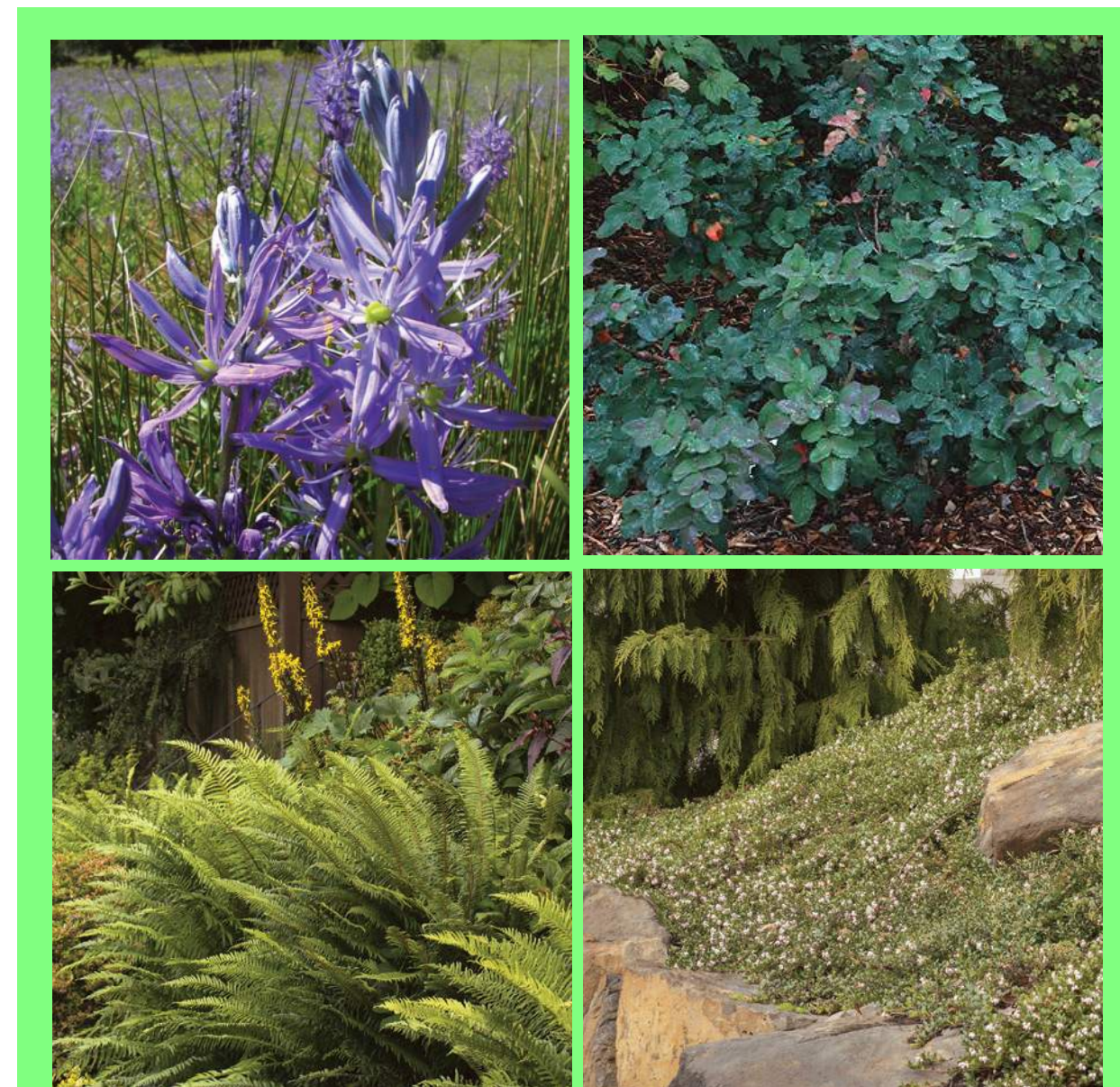
SILVERDALE TRANSIT CENTER Plaza Landscape Areas



TREES
trees selected originate from or are partially derived from plants that originate from our region



Precedent Image
Transit Center Rain Garden



ORNAMENTAL NATIVE PLANTS
plants that originate from our region that have ornamental qualities

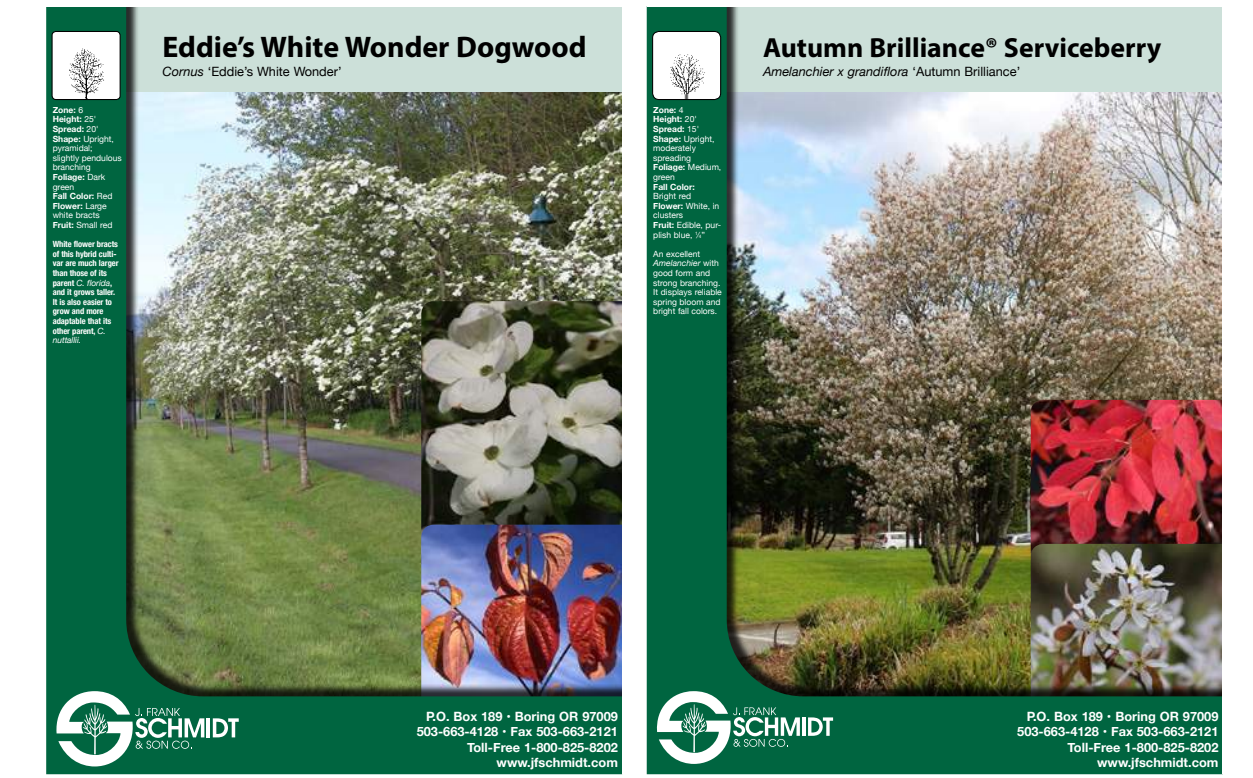
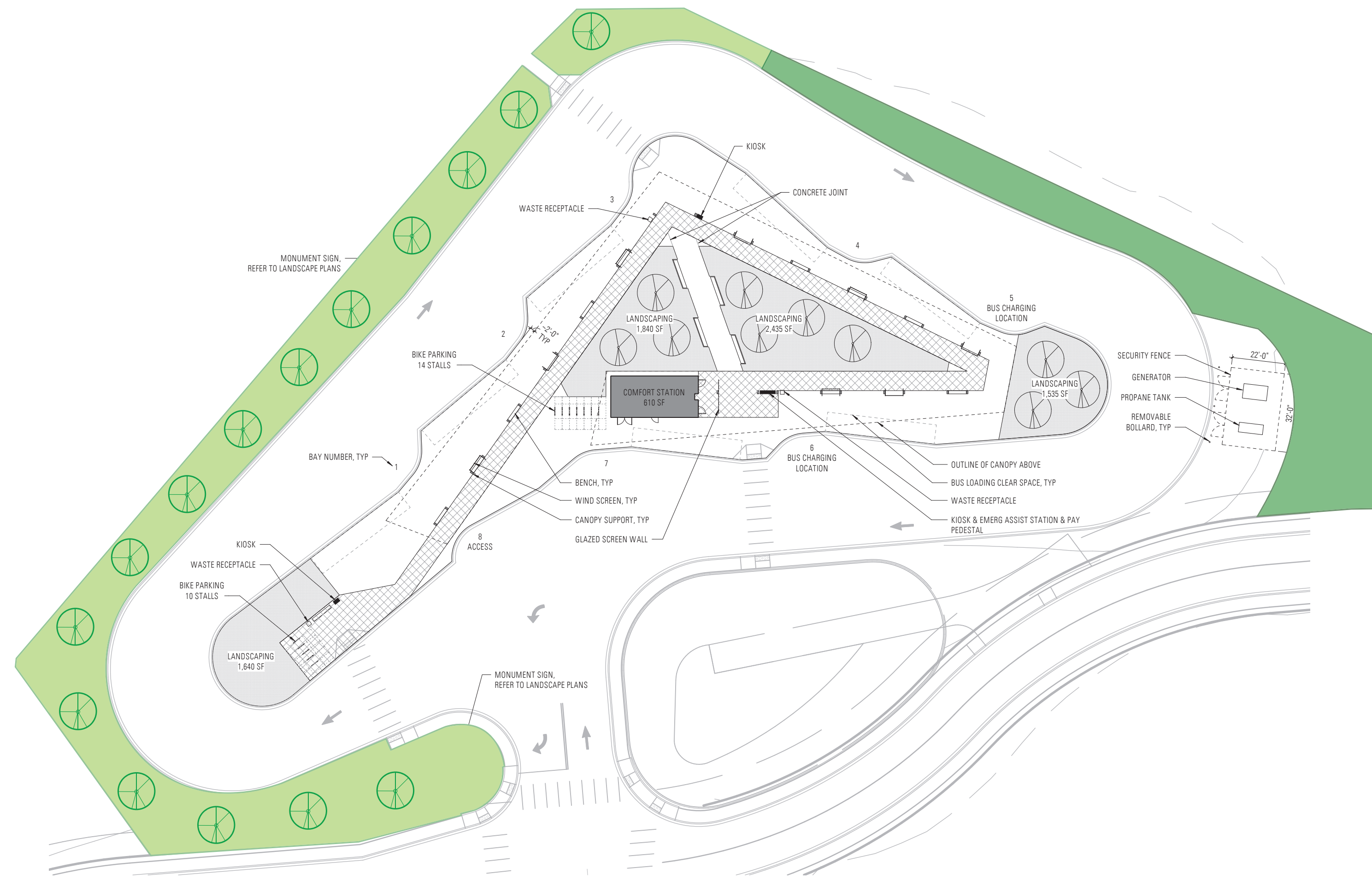


RAIN GARDEN PLANTS
an ornamental array of plants that can tolerate water availability extremes



FOOD PRODUCING PLANTS
plants that offer patrons a snack

SILVERDALE TRANSIT CENTER **Perimeter Landscape Areas**



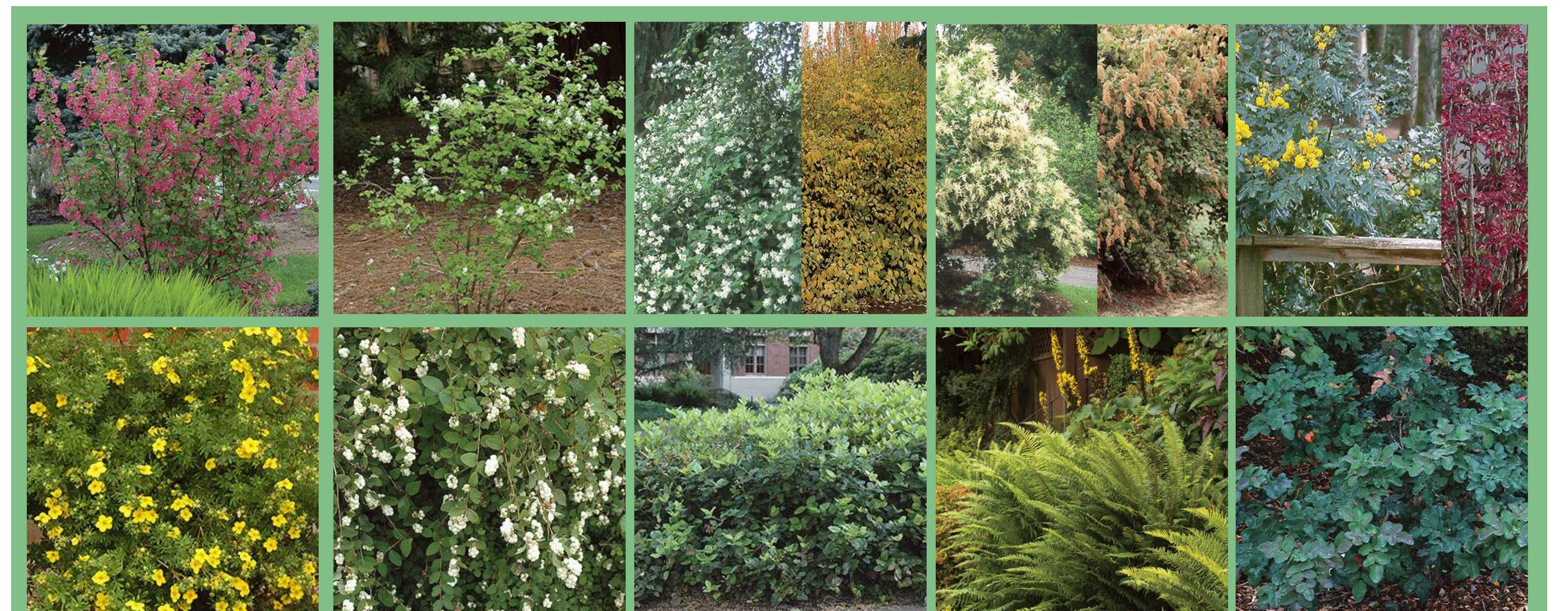
TREES
trees selected have multi-seasonal interest features with white flowers in spring and orange-red foliage in autumn



Precedent Image
Whispering Firs Stormwater Park
Silverdale, WA



LOW GROWING PLANTING MIX
plants that allow for better security from the street while offering seasonal color



NATIVE SHRUB MIX
plants that originate from our region